

# THE SENTINEL

1932







ARCHIVES



FRIENDS OF THE LIBRARY

Montana State University

Gift

Dr. Morton J. Elrod

from

Mary Elrod Ferguson











# COPYRIGHT



## CONTENTS

### BOOKS

1. UNIVERSITY
2. CLASSES
3. ATHLETICS
4. ORGANIZATION
5. SCENIC
6. ACTIVITIES
7. ADVERTISING





# DEDICATION



**WITH UTMOST RESPECT, WE,  
THE STAFF OF THE 1932 SENTINEL,  
DEDICATE THIS YEARBOOK TO  
OUR FATHERS AND MOTHERS,  
WHO BY THEIR FORETHOUGHT  
AND ARDUOUS EFFORTS,  
HAVE MADE POSSIBLE OUR  
UNIVERSITY EDUCATIONS.**



## In Memoriam

---

CHARLOTTE ELIZABETH SMITH—'33  
July 2, 1931

HELEN D'ORAZI KENNEDY—'32  
February 19, 1932

JAMES HOWARD TOBIN—'34  
April 22, 1932

JACK NESBITT ROCHESTER—'35  
April 24, 1932



UNIVERSITY



ADMINISTRATION







# Administration

## EXECUTIVE BOARD

C. H. Clapp  
S. J. Coffee

L. E. Bunge  
J. B. Speer



## OFFICERS

Melvin A. Brannon	- - -	Chancellor of the University of Montana
Charles H. Clapp	- - - - -	President of the State University
Frederick C. Scheuch	- - - - -	Vice President
Richard H. Jesse	- - - - -	Dean of the Faculty
J. E. Miller	- - - - -	Dean of Men
Mrs. Harriet Rankin Sedman	- - - - -	Dean of Women
Robert C. Line	- - -	Dean of the School of Business Administration
Freeman Daughters	- - - - -	Dean of the School of Education
Thomas C. Spaulding	- - - - -	Dean of the School of Forestry
Arthur L. Stone	- - - - -	Dean of the School of Journalism
C. W. Leaphart	- - - - -	Dean of the School of Law
DeLoss Smith	- - - - -	Dean of the School of Music
John Suchy	- - - - -	Acting Dean of the School of Pharmacy
J. B. Speer	- - - - -	Registrar and Business Manager
Philip O. Keeney	- - - - -	Librarian
W. E. Maddock	- - - - -	Director of the Public Service Division and Board of Recommendations







The dedication of the 1932 Sentinel to the parents of the students of the State University of Montana is appropriate and timely. Opportunities for all education, elementary, secondary, and higher, enjoyed by the youth of Montana have been provided by their parents and their associates. The hunger of Montana parents for education for their children during lean as well as fat years in Montana has been unbelievably great. Most fitting, therefore, is the gracious effort of the Sentinel editor to follow the injunction of the great seers and prophets of the ages: "Honor thy father and thy mother, that thy days may be long in the land which Jehovah thy God giveth thee."

MELVIN A. BRANNON,  
Chancellor.



# Departments



## CHAIRMEN

M. J. Elrod	Biology
J. W. Severy	Botany
R. H. Jesse	Chemistry
Harry Turney High	Economics and Sociology
H. G. Merriam	English
C. H. Riedell	Fine Arts
F. C. Scheuch	Foreign Languages
J. P. Rowe	Geology
J. E. Miller	History and Political Science (Acting Chairman)
Helen Gleason	Home Economics
Philip O. Keeney	Library Economy
N. J. Lennes	Mathematics
Major G. L. Smith	Military Science
W. E. Schreiber	Physical Education
G. D. Shallenberger	Physics
F. O. Smith	Psychology





I am pleased to learn that the 1932 Sentinel is to be dedicated to the fathers and mothers of Montana. No other group has made such sacrifices for higher education or has made them so gladly. Their sacrifices are, of course, primarily for the sake of their own sons and daughters; that from the benefits of higher education, their sons and daughters may live more satisfying and happier lives than the parents have lived. There is also the hope that by creating new goals and ideals or by securing wider acceptance of well tested principles, as yet never truly put into practice, a better world may be moulded in which their sons and daughters and grandchildren may live.

CHARLES H. CLAPP,  
President.



What we owe our fathers and mothers:

- \* \* \* "to cultivate the open mind;
- to combine the three great heritages of education,
- always to listen to the man who knows,
- never to laugh at new ideas;
- to know the secret of getting along with other people,
- to cultivate the habit of success;
- to know as a man thinketh so he is;
- to link ourselves with a great cause;
- to build an ambition picture to fit our abilities;
- to try to feel the emotions we ought to feel,
- to keep busy at our highest natural level;
- to know it is never too late to learn;
- never to lose faith in the man we might have been;
- to achieve the masteries that make us world citizens:" \* \* \*

(WIGGAM)

FREDERICK C. SCHEUCH,  
Vice President.





It has been a real effort for many parents to send their sons and daughters to the State University this year but that effort has been rewarded in the splendid co-operation between students and faculty during the year 1931-1932. It is with pleasure that we look back over the results of the loyalty, intelligence and industry that have made this year a true success.

R. H. JESSIE,  
Dean of the Faculty.



The mothers and fathers of college students are entitled to the honors. In our generation many of them have subordinated almost all other interests to putting their children through college. Their faith in the value of a college training seems unbounded. The parents deserve the utmost co-operation from the sons and daughters in making the most of opportunities at college. May their dreams of success for their children come true?

J. B. SPEER,  
Registrar and Business Manager.



Herbert Spencer said that education is a preparation for living. High scholarship and participation in student activities which are the best opportunities offered by a university for this preparation have marked this year at Montana. Mothers and fathers who have made sacrifices to send their sons and daughters here may well look with gratification at these results.

J. E. MILLER,  
Dean of Men



The mothers and fathers of Montana have sacrificed much to send their sons and daughters to the State University this year. If they could realize the gratitude and appreciation expressed in the serious minded attitude of the students, they would feel that the confidence which they have placed in their children is justified.

HARRIET RANKIN SEDMAN,  
Dean of Women.





The end of four of the happiest years of our lives finds us loath to leave the Alma Mater who has given us so much. Behind our University stand our mothers and fathers. They have created this school for us and they have made it possible for us to carry away with us the beautiful memory of days at Montana.

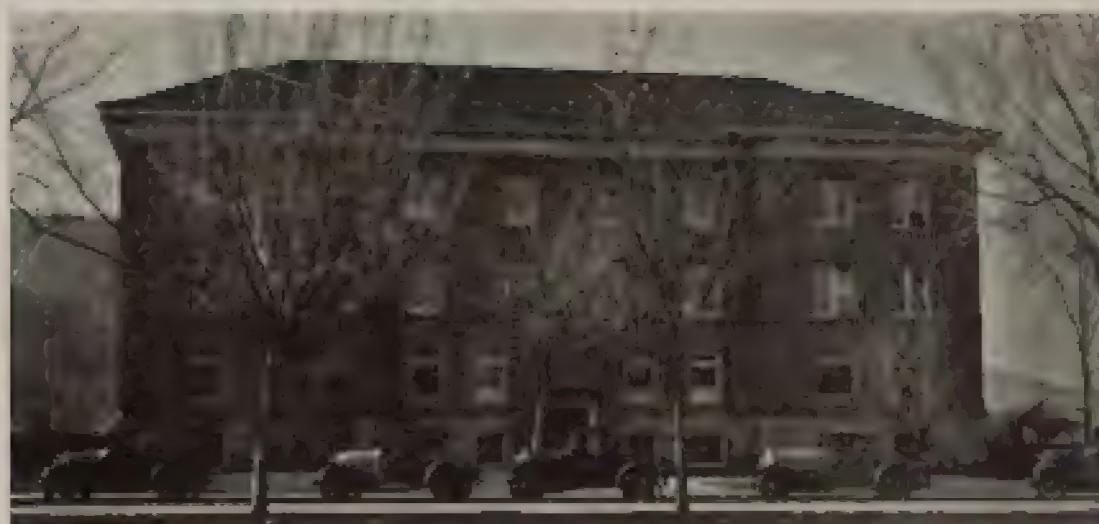
ELLA POLLINGER,  
A. W. S. President.



Intangible is our feeling for the parents who have given us these pleasant Montana years. It is difficult to put into any words the true debts which they have coming. Many of us have attained our educations through years of sacrifice on their parts. They command our respect and our only hope is that we may in some way measure up to their expectations.

All that we may say is "thank you," and they will understand.

BOB HENDON,  
A. S. U. M. President.



## School of Business Administration

Training for the general field of business and specialized training in accounting are the aims of the School of Business Administration under the supervision of Dean Robert C. Line. The school offers a business training in banking, finance, transportation, marketing, merchandising, trading and public utilities.

The school first was organized at the State University in 1914. Shirley J. Coon, the first dean, was succeeded by Dean Line, a Montana graduate who had done advanced work at Harvard university. Since the school's organization there has been a rapid increase in enrollment which ranks it among the larger schools on the campus today.



R. C. Line, Dean

All women in the school are organized into the Commerce club which furthers the interests of women in business. Men in the school who have done distinctive work are organized in Alpha Kappa Psi, men's national professional fraternity.

Two years ago the School of Business Administration inaugurated courses in typewriting and shorthand, and a large enrollment has appeared in both divisions under the instruction of Miss Emily Maclay.





## School of Education

The main objectives of the School of Education are training superintendents, principals and supervisors for the public schools of Montana and training teachers for the junior and senior high schools and special subjects such as music, art, physical education and home economics; to provide assistance to the schools of the state in the form of testing programs, extension work and expert counsel; to provide opportunities within the state for those who wish to pursue graduate work toward the Master's degree in Education; to encourage investigation and research in the schools of the state; and finally, to unify and co-ordinate the agencies of the State University which contribute to the preparation of those who expect to enter school work.

The school offers curricula for the student working for the degree of Bachelor of Arts in Education and Master of Arts and with the completion of institutional requirements the Certificate of Qualification to Teach is granted.

Practical work in the senior year in the School of Education is given to the student in teaching in the Missoula schools under the supervision of the regular instructors

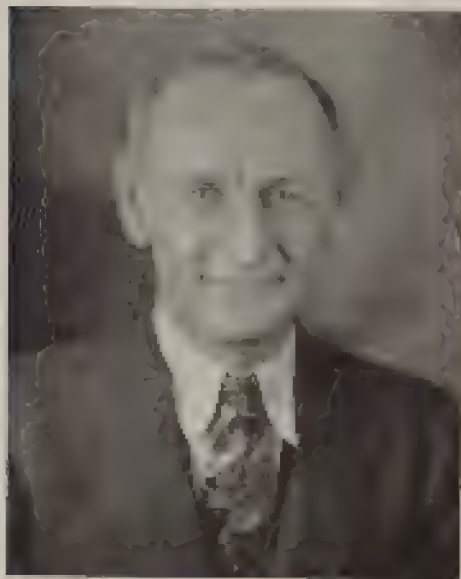


Freeman Doughtets, Dean



## School of Forestry

The School of Forestry has among its enrollment students from almost every state in the union. Instruction along two distinct lines is provided: An undergraduate course of four years allowing specialization in the various branches of forestry, and a graduate course leading to the degree of Master of Science.



W. C. Spaulding, Dean

In 1913 the state legislature established the School of Forestry at the State University. In 1909 the Government Forest service, in co-operation with school officials, had established a Ranger school on the campus but in 1910 the State University took over the management of the school. The Ranger school was discontinued six years ago. The School of Forestry now ranks among the highest in the United States.

Students and faculty members in the school are organized into a Forestry club which promotes scientific discussion of forestry problems and fosters social spirit among its members.





## School of Journalism

Acquaintanceship with the fundamentals of journalism, the art of concise, tolerant and kindly treatment of news; appreciation of the importance of definite news policy—these, combined with as broad a background as possible in literature, science, history and economics, are the aims of the School of Journalism. Courses in journalism were first given in 1912 and in 1914 the School of Journalism was established at the State University, with Arthur L. Stone as dean. The school is a member of the American Association of Schools of Journalism.

The Press club is open to all students in the school, while Sigma Delta Chi, men's international professional fraternity, and Theta Sigma Phi, women's national honorary fraternity, bid students of distinction in the school. The Montana Kaimin furnishes practical training for journalism students and is the only campus newspaper. It is printed in the shop owned by the school, where a comprehensive course in printing is offered to seniors, under the instruction of Charles W. Hardy. The shop is equipped to handle all types of printing and only work of the highest grade is turned out from it.



A. L. Stone, Dean



## School of Law

The School of Law offers a degree of Bachelor of Laws to students finishing three years of legal work and two years in pre-legal preparation. The case system of study is the method used in the school and it is the only school on the campus definitely using the honor system among students.

From the date of its foundation in 1911, the school has required two year's preparation and now it admits no special students. It is a member of the Association of American Law Schools and is approved by the American Bar association.



C. W. Josephson, Dean

Students in the School of Law are organized in the Law School association. Phi Delta Phi, men's national honorary legal fraternity, is open to men students showing distinctive ability in the profession.

The library in the school includes more than twenty three thousand volumes and is being added to each year. The Anaconda Copper Mining company donated the seven thousand-volume library of the late Senator W. A. Clark to the school three years ago and increased the size of the library considerably. Generous gifts of Mrs. W. W. Dixon and Judge John J. McHatton also have increased its size.





## School of Music

Students in the School of Music are graduated with the degree of Bachelor of Arts with a major in music. This course is for supervisors and teachers of music in the public schools and covers a four-year period. Individual lessons in music to students outside of the school are given by the faculty in piano, voice, violin, organ, wind instruments.

DeLoss Smith has been dean of the school since its establishment in 1914. Previous to this time piano instruction was given at the State University. The school occupies part of the third floor of Main hall and the music practice house on University avenue.

Sigma Alpha Iota, women's national music fraternity, is made up of juniors and seniors who have shown outstanding musical ability. The State University Symphony orchestra, under the direction of Professor A. H. Weisberg, offers practical experience as do the men's and women's glee clubs.

Dean Smith this year organized a Choral Society composed of the members of the men's and women's glee clubs.



DeLoss Smith, Dean



## School of Pharmacy

Two degrees are offered by the School of Pharmacy at the State University. The degree of Pharmaceutical Chemist is granted to students finishing the three year course, and the degree of Bachelor of Science in Pharmacy to those finishing the four-year course. The latter degree prepares for teachers of pharmacy, food and drug inspectors and analysts, manufacturing pharmacists, and gives preparation for pre medical study in higher institutions.



John Suchy, Acting Dean

In 1913 the school was transferred to Missoula from Bozeman where it had been established in 1907. It is a member of the American Association of Colleges of Pharmacy and receives helpful co-operation from the Montana State Pharmaceutical association.

Social and scientific stimulus is given to students in the Pharmacy club open to both men and women in the school. Kappa Psi, men's national pharmacy fraternity, and Kappa Ipsilon, women's national pharmaceutical fraternity, are honorary for students of distinction in the school.

John Suchy is acting dean of the school this year, filling the position of Dean C. E. Mollett who is studying for his doctor's degree at the University of Florida.



# CLASSES





Lockwood

SENIOR CLASS OFFICERS

Glenn O. Lockwood	President
Frank McCarthy	Vice President
Mary Hegland	Secretary
Jack White	Treasurer



McCarthy



Hegland



White





**GERALD G. ALQUIST, Council**  
Journalism: Sigma Chi Press club 1, 2, 3, 4; Kappa associate editor 1, 1; Student staff 2, 1; Sigma Delta Chi 2; secretary-treasurer 1; Publications board 2, chairman 4.



**LESLIE M. ARNETT, Great Falls**  
Business Administration: Sigma Nu, Alpha Kappa 421, president 1.



**ELLA ARNETT, Co-haden Falls**  
Biology: Fellowship groups: Phi Sigma, Quodians.



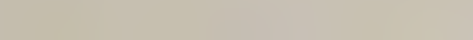
**ROBERT G. ARNETT, Council**  
Business Administration: Phi Sigma Kappa.



**E. F. ASTLE, Haddon**  
Journalism: Sigma Phi Epsilon: Sigma Delta Chi; vice president 4; Press club 1, 2, 3, 4, president 1; Newsman club 1, 2, 3, 4; Kappa staff 2, 3, 4; columnist 3, 4; Student humorist 2, 1; band 1, 2; State University Players.



**DONALD A. ATRISS, Paris**  
Biology: Sigma Chi.



**EDITH MAY BALDWIN, Helena**  
Mathematics: Kappa Kappa Gamma, soccer, all-star team 1, hockey 2, 3; May Fair 1, 2; Haddon 2; Delta Psi Kappa 3; president 4; A. W. S. 2, vice president; North hall 1; Quodians.



**MARY VIRGINIA BALLARD, Dubois**  
English: Kappa Alpha Theta, Quodians.



**CLYDE BANFIELD, Bonanza**  
Chemistry: M club 2, 3, 4; M club tournament 2, 3, 4.



**MIRIAM LITTLE BARNHILL, Missoula**  
Foreign Languages: Kappa Kappa Gamma, Tutor 2; Mortar Board 1; A. S. U. M. vice president 1; Missions 2, 3, 4; secretary 2; Haddon 1, 2, 3, 4; assistant manager 2; manager 3; May Fair 1; Social Program 1, 2, 4; business manager 1; A. W. S. executive board 1; Pan-Hellenic 4; secretary 1; Junior Prom committee 2, 3; Big Sister Tea committee 3, 4; Social Prom committee 1; French club 1, 2; Spanish club 2, 3; A. S. U. M. social committee chairman 1; Quodians 4.

**KENNETH BEDDHEE**, Oregon Wis.  
Forestry; transfer from University of Wisconsin 2; Forestry club 2, 3, 4, 5; Jovials 1, 5; Wesley club; Glee club 2, 4; Forestry Kappa business manager 4; editor-in-chief 5; chairman, foresters' hike 4; Forester's hall committee 4; Rifle club 2, 4, 5.

**RUTH BERNHEI**, Helena  
English; Delta Delta Delta; all-star (Glee) team 1; May Peps 1; H.J.I.X. 1; University Players 4, 5; Junior French club 4, 5; quadrants.

**RAY M. BIRCK**, Corvallis  
Business Administration

**THELMA BURNERY**, Kallspell  
Latin; Alpha Xi Delta; Varsity Violin 1; Carlton hall proctor 2, 3, 4; A. W. S. executive board 2, 4; Carlton hall president 1; quadrants 4.

**EVELYN BLASSER**, Missoula  
Foreign Languages; Kappa Delta; Tauan 2; Massman 2, 4; French club 3; treasurer 4; Hedges 1, 2; May Peps 2, 3; Pan-Hellenic council 2, 3; manager of Pan-Hellenic festival 2; A. W. S. M. social committee 4; Abside Board 4; Greek Prom committee 3; quadrants 4.

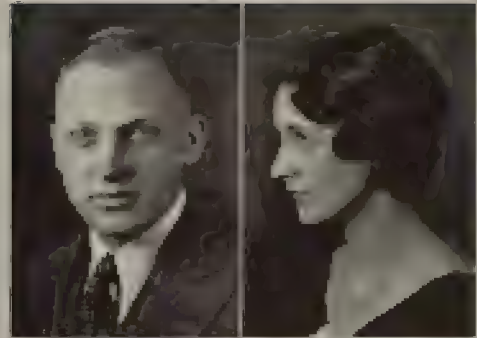
**ROBERT BLAKESLIRE**, Brookings, S. D.  
Journalism; Alpha Tau Omega; Left Paw; Bear Crew 2; Track 1, 2, 3; M club 2, 3, 4; Interscholastic committee 2, 3, 4; Sigma Delta Club 2, 4; business manager, Frontier 4.

**ROBERT H. BOBEN**, Missoula  
Classes and Chemistry; Pi Mu Epsilon 2, 3, 4; French club 1, 2, 3; assistant track manager 1, 2; varsity track manager 3; M club; Kappa Tau 3, 4.

**ELISE BOEYTER**, Harlowton  
Foreign Languages; Quadrants.

**ELRANOE BOERS**, Kallspell  
History; Delta Delta Delta; A. W. S. representative 4; Spanish club; quadrants.

**HAZEL BOMBERG**, Bessemer  
Foreign Languages; Kappa Delta; North hall dance committee 1; class treasurer 2; Tauan 2; president; track team 2; hockey team 2; dance committee 3; Interscholastic committee 2, 3; Junior Prom executive committee 3; French club 2, 4; Spanish club 2, 4; vice president 4; W. A. A. 2, 3; H.J.I.X. 2; Pan-Hellenic council 2, 4; quadrants 4; president; chairman of Greek Prom 4; chairman of Senior Reception committee 4.







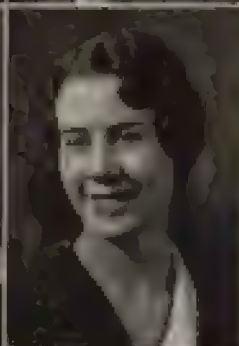
FRANK BOYD, JR., Missoula  
Chemistry; Sigma Chi.



ESTHER BOYD, Helena  
English; Quadrans.



BETTY BRADY, Weisell  
Education; Delta Gamma; Tauan 2; Varsity Volley.



MARGARET BRAYSON, Columbia Falls  
Journalism; Theta Sigma Phi; French club 2; Press club 1, 2, 3, 4; vice president 3; Kappa staff 3, associate editor 4; Newman club; Varsity Volley 2; Quad. 1938.



ROBERT JAMES BROWN, Missoula  
Chemistry; Phi Lambda 2, 3, 4; president 4; Mathematics club, track 1; M club tournament.



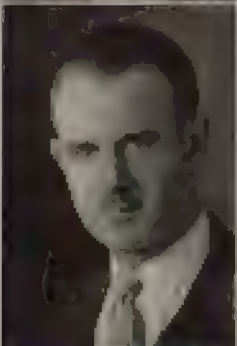
WILLIAM A. BROWN, Helena  
History; Phi Delta Theta; Masquers 1, 2, 3, 4; vice president 1, debate 1; Student Christian council 1; M club tournament 2, 3; Junior Prom committee 3; Junior math 3; Kappa Kappa Psi 2, 3, 4; vice president 2, 3; band 1, 2; Hi Jinx 2; Student Debate Union 1, 2, 3; assistant circulation manager of the Sentinel 2; Traditions committee 2.



ROBERTA CARRIERE, Cameron  
English; Kappa Delta; W. A. A. hockey team 2; A. W. S. executive board 2, 3; Seven Arts club 3, 4; Quadrans 1.



MARTIN W. CARSTENS, Missoula  
Botany; Phi Sigma 3, 4; president 1; Purple Towers show.



BRUCE CENTERWALL, Crystal Bay, Minn.  
Forestry; Sigma Phi Epsilon; Lambda Forestry club; football 1; interannual athletics 1, 2, 3, 4.



CATHERINE M. CESARI, Corvallis  
Home Economics; Home Economics club 1, 2, 3, 4; Spanish club 2, 3, 4; Varsity Volley 2; Newman club 1, 2, 3, 4; International club 1, 2.

WILLIAM CHAPIN, Hamilton  
 Forestry, Forestry club 1, 2, 3, 4, 1940-41, 1941-42, 1942-43, 1943-44, Foresters' Hall committee 1, 2, 3, 4, Forestry Receipt staff 2, Forestry School Staff club 1, 2, 3, 4, Forestry club executive board 2.

DORIS CHRISTIAN, Bala  
 Foreign Languages, Quads.

LESLIE CHRISTENSEN, Boulder  
 Business Administration.

ISABEL CLAPP, Missoula  
 Chemistry, Sigma Chi.

BERTELLA COX, Great Falls  
 Physical Education, Varsity Volley 2, 3, Quads.

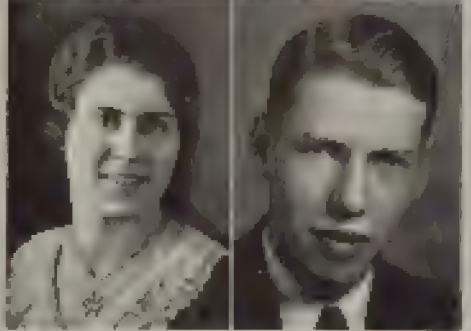
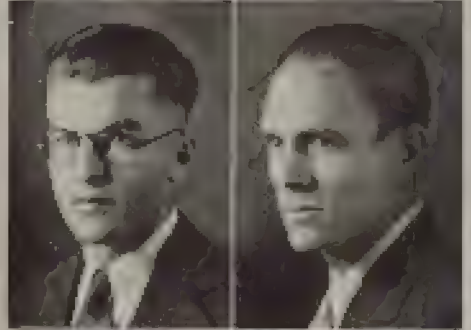
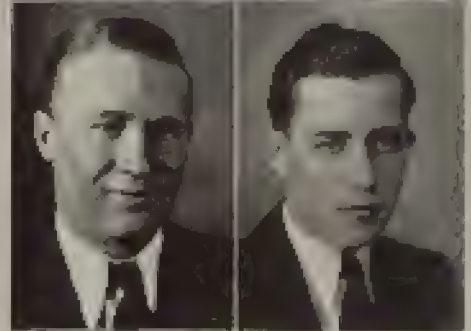
BOB COONEY, Great Falls  
 Forestry, Sigma Alpha Epsilon, School Staff, Forestry club 1, 2, 3, 4, 1940-41, 1941-42, 1942-43, president 2, Forestry club editor 1, Foresters' Hall committee 2, 3, 4, Forestry team 1, 2, 3, 4, captain 2, Central board 1, Sigma chapter committee.

ELDON CREDGITHON COEY, Missoula  
 Chemistry, Phi Lambda, Band 1, 2, 3, 4, Scripps orchestra 1, 2, 3, 4, Intercollegiate club orchestra 1, 2, Purple Tawnee team.

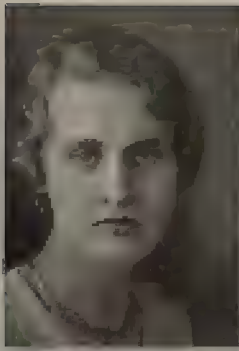
ROBERT GORDON COVINGTON, Park City  
 Journalism, Sigma Delta Chi 2, 4, Press club 1, Track 2, 4, Independent organization 2, 4, Intercollegiate football 2, 4.

ANNA MAE CROUSE, Bozeman  
 Miss., transfer from New England University of Miss. & also club 4, 5, His. Aug. 5, Quads.

ALAN CUNNINGHAM, Helena  
 Business Administration, Sigma Chi.







IRENE CUNNINGHAM, Missoula  
Economics: Alpha Phi

ROBERT WILLIAM CURREY, Livingston  
Pharmacy: Delta Sigma Lambda, Kappa Psi; Pharmacy club 1, 2, 3; Pilgrims' club; Intramural baseball 1, 2, 3.



LOWELL R. DAILLEY, Seaside  
Chemistry: Delta Sigma Lambda, Varsity Varsity 2; Traditions committee 2; Hilaria 2; honorary Bear Paw 2 rifle champion 2; glee club 2; football 1, 2, 3, 5; M club 3, 4; secretary 1; Interfraternity council 1.

MARION DAVIS, Missoula  
Physical Education: Alpha Chi Omega; Hilaria 1; Varsity Varsity 1; Pan-Hellenic council 4; vice president: Delta Psi Kappa 4; vice president, Quadrants 4.



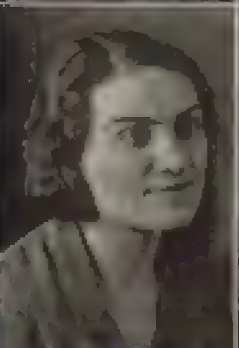
STANLEY R. DAVISON, East Helena  
History, R. O. T. C. Rifle team 1, Spanish club 1.

HAROLD G. DEAN, Plains  
Law: Sigma Alpha Epsilon, Hilaria 3; Law School association 3, 4, 5; Interfraternity council 3, 4, 5; minor sports manager 1; M club 4, 5.



WILLIAM E. DENEENY, Butte  
Business Administration: Phi Delta Theta; Bear Paw 2; vice president South hall club 1.

AMOS DENNY, Missoula  
Botany: Wesley club 1, 2, 3, 4; vice president 3; University Christian Union 4; Phi Sigma 3, 4; treasurer 4.



RUTH OAK, Missoula  
English

REBECA VIRGINIA DOERNER, Missoula  
Home Economics: May Day 5, 2; Hilaria 4; Varsity Varsity 3, 5; Home Economics club; Newman club; Glee club 2, 3, 4.

ALICE DOULL, Idaho  
Pharmacy

ANTHONY A. FIORELLI, Missouri  
Fine Arts, Independent council, repre-  
sentative 3, 4, Press club 1, basketball 1,  
Reading 3, Sentinel cartoonist 1, 2, 3,  
Promby artist 2, French club 2

DAVIDSON ORVAL DORRISWACHE,  
Nebbr

Business Administration, transfer from  
International Union college 2, Alpha  
Kappa Psi advisor, Wesley club 2, 3, 4,  
Mathematics club 2, 3, Fellowship group  
2, 3, 4, Vice president 3, president 4

ELIZABETH EYER, Sheridan  
English, Kappa Alpha Theta

VIRGINIA ELLISBERG, Victor  
English, Spanish club 2, Yarns Yacht  
2, Quadrons 4

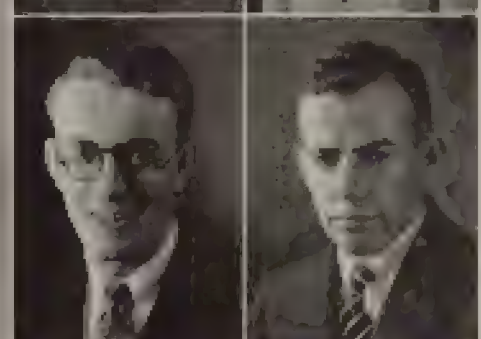
FLORENTINE MAE ENO, Boise  
Home Economics, Kappa Delta, Home  
Economics club 3, 4, German club 4,  
Quadrons 4

KARL WILLIAM EDDYSON, Annanda  
Business Administration, Sigma Phi Ep-  
silon, Kappa Kappa Psi orchestra 4,  
band 1, 2, 3, Spanish club 1, 2

ELMI MARIE BISKINIA, Missoula  
Foreign Language, transferred from  
Montana State college 2, French club 4,  
Spanish club 3

RAY A. FARMER, Missoula  
Business Administration, Alpha Kappa  
Psi

ALFRED A. FLINT, Phillipsburg  
Forestry, Sigma Alpha Epsilon, Omicron  
Greek 1, 2, 3, 4, M Club 2, 3, 4







EUGENE WILLIAM FORBES, Eagle  
Book, Calif.

Forestry; transferred from Pasadena college 2; Forestry club 2, 3, 4; vice president 3; Phi Sigma 1; Druids 1; Forestry rifle team 3, 4; Foresters' Hall committee 3, 4.

KENNETH POWELL, Billings

History; Delta Sigma Lambda; transferred from University of Washington 3.



MARIE FRANCIS, Springdale

Journalism; Theta Sigma Phi; editor, Montana High School Editor.

IDA MARIE FRIEDRICKSON, Idaho

Pharmacy; Kappa Epsilon; president 2, 3; vice president and historian 1; Chalkin hall club secretary 1; Pharmacy club secretary 2; Spanish club 4; swimming team 1, 2.



CHARLES GAUGHAN, Missouri

Business Administration; Sigma Phi Epsilon; track; Bear Paw; Silent Sentinel; Interfraternity council 3, 4; Interscholastic committee 2, 3, 4; Alpha Kappa Phi 3, 4; Spanish club; chairman; Senior Club committee.

BONITA LOUISE GRUB, Missouri

Foreign Language; Spanish club 1, 2, 3, 4; German club 1; Quadrons 1.



RUTH GILLESPIE, Grass Range

English; Alpha Phi; W. A. A. 2; Pan-Hellenic board 2; swimming team 2; track team 2; Press club 1; Mortar Board; Quadrons 4.

FRED GRIFFIN, Katspelt

Pharmacy; Pharmacy club 1, 2, 3; track 2, 3.



MARGARET M. GRIFFING, Billings

Muse:

WILLIAM F. GUNTERMANN, Santa Barbara, Calif.

Forestry; Forestry club 1, 2, 3, 4; Forestry club rifle team 1, 3, 4; International club 1, 2, 3; president 3; Glee club 2; Druids 3, 4.

**NANCY C. HAMMATT**, Missoula  
 Economics, Alpha Chi Omega; transfer  
 from The University of California, Quad-  
 rants.

**WALLACE HANNAH**, Big Timber  
 History, R. O. T. C. officer.

**DOROTHY MARIE HANDEIN**, Idaho  
 Law, Alpha Phi; transferred from Reed  
 college; Law School association 2, 3, 4;  
 vice-president 4, 5; Newspaper club 2, 4, 5;  
 North West leader 1; quorians 4, 5, A.  
 W. S. 1934-5.

**HELMER NELSON HANSEN**, Missoula  
 Chemistry, Phi Lambda Chi 2, 3, 4; transfer  
 on 4.

**EVANS LEAVIS**, New Bedford, Mass.  
 Forestry, Forestry Club 1, 2, 3, 4; Daniels  
 Society; Kappa staff.

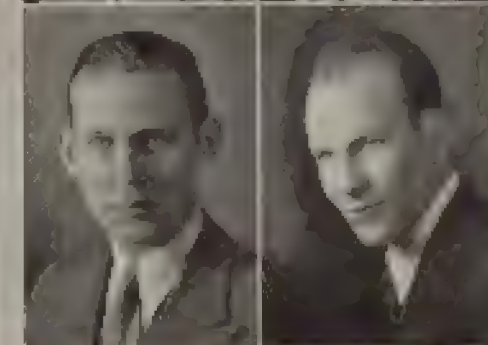
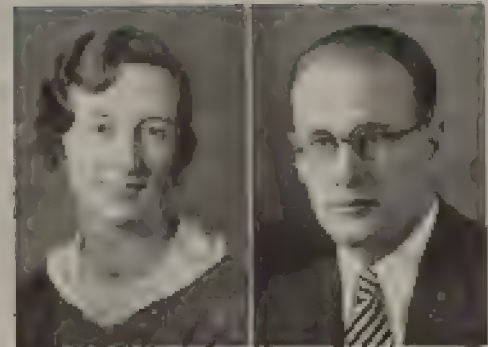
**GERTRUDE DAWKS**, Great Falls  
 Zoology, Alpha Phi; Masquers 2, 4; Ho-  
 Jins assistant director 1; May Pole man-  
 ager 4; Variety Varsity 1, 2, 3; May Pole  
 3; French club 1; quorians.

**PAULINE HAYNES**, Ponchaiku, Minn.  
 English.

**MARY A. HULLAND**, Great Falls  
 Fine Arts, Alpha Xi Delta; Baseball 1;  
 May Pole 1; W. A. A. 1, 2; Art league 1,  
 2, 3, 4; Young 2; Spear 4; A. W. S. 3; Phi-  
 Lambda Chi 2, 3, 4; president 4; Junior Prom  
 committee 1; Good Will committee 2;  
 Good Will committee 3; 4; class asso-  
 ciate 4; Senior amusement committee;  
 Home Economics club 1, 2, 3, 4; quorians.

**OLIVIAN HEMPHEN**, Missoula  
 Business Administration, Sigma Chi  
 Missions; president 1.

**THOMAS LEE HONNOLD**, Kalispell  
 Pharmacy, Phi Sigma Kappa; Pharmacy  
 Club; Kappa Psi.







**VERNON H. BOWEN, Antelope**  
 Law: Sigma Alpha Epsilon, bond 1, 2, treasurer 3, 4, 5; Beta Day 2; Kappa Kappa Phi; Law school association 2, 3, 4, 5; Law School Honor committee 3; Varsity Varsity 2, Basketball 3; State University Physics 1.

**CATHARINE MAY HURST, Great Falls**  
 French: W. A. A. 1, 2; Wesley club 1, 2, 3, 4; Treasurer 1; Fellowship group 3, 4; Greek Program 2, 4.



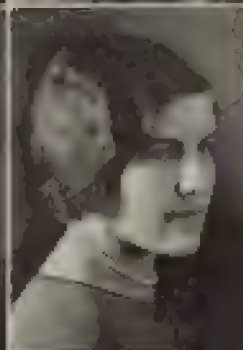
**WILLIAM H. BERNTHAL, Madison, Wis.**  
 Forestry: Forestry club 1, 2, 3, 4; president 3; Deeds 2, 4; Foresters' Hall committee 2, 3, 4.

**FLORENCE L. JARRUSSI, Red Lodge**  
 Pharmacy: Kappa Epsilon 1, 2, 3, 4; vice president 3 and president 4; Newman club; Pharmacy club 1, 2, 3, 4; Spanish club 3, 4; International club 1, 2, 3, 4.



**GLENN F. JOHANNES, Billings**  
 Economics; Kappa Sigma; Varsity Varsity VII 1.

**CATHERINE JOHNSON, Millon, Idaho**  
 Economics; Varsity Varsity 2, 3; Purple Towers 3.



**HELMI JOHNSON, Missoula**  
 Foreign Languages.

**MARGARET JOHNSON, Parma**  
 Education; transferred from Montana State Normal college 4; Spanish club 4.



**RUTH J. JONES, Dodson**  
 Physical Education; Kappa Delta; W. A. A. bond 4; treasurer of Delta Psi Kappa 3; U. A. W. 3; representative 3, 4; Dep. committee; chess club 1, 2, 3, 4; Garden Hall dance committee 1; quadratics.

**ELEANOR MEREDITH KAUTZ, Shelby**  
 Economics; Zeta Chi; Psi Chi; University Christian Union council 3, 4; Varsity Varsity 1; May Picn. 1; Pre-Hellenic council 2, 4; Student Fellowship group 3; Chess; Fiction committee 4; German club 4.

**DELLA KENNEDY, Helsinki**  
 Journalism, Theta Sigma Phi, treasurer  
 1, Press club 1, 2, 3, 4, executive council  
 1, French club, 2, Psi Chi 2, Sentinel  
 staff 3, Kappa staff 3, associate editor 4

**OLYVER KINONEN, Milwaukee**  
 Business Administration, Alpha Kappa  
 Psi.

**CORNELIA KLITTEK, Haver**  
 English.

**PHYLLIS KREYCHK, Missoula**  
 Pharmacy, Pharmacy club.

**ANNA M. LARSON, Missoula**  
 English, Art League, Seven Arts club  
 collegiate staff 1, quadrans.

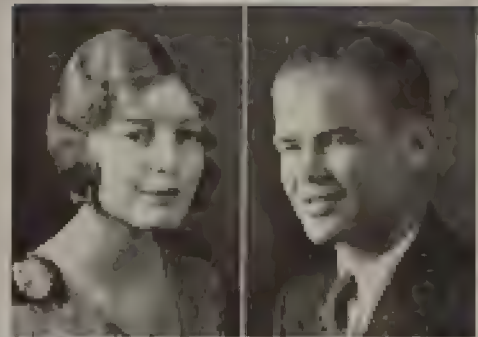
**PHILOA LARSON, Missoula**  
 Home Economics.

**HAZEL A. LARSON, Helena**  
 Home Economics, Sigma Kappa, A. W.  
 S. Journal 2, 3, Home-Helena council 2, 3, 4,  
 Social Forum committee 2, 4, Ho-Hus 1,  
 2, Varsity Voted 1, 3, Home Economics  
 club 2, 3, 4, secretaries-treasurer 3, French  
 club, quadrans.

**STANFORD H. LARSON, Missoula**  
 Forestry, Forestry club 1, 2, 3, 4, Fore-  
 sters' Hall committee 2, 3, 4, swimming  
 1, 2, 3, Dynals 2, 4, president 4, Phi  
 Sigma 3, 4

**MARGARET JOSEPHINE LEASE, Great Falls**  
 Biology, Wesley club 1, 2, 3, 4, treasurer  
 2; president 4, Fellowship club 3, 4, W.  
 A. A. 1, 2, Curbin hall proctor 3; Phi  
 Sigma, quadrans.

**MARGARET JACOBS LENOX, Helena**  
 Botany, Kappa Alpha Theta.







ELEANOR LENNERS, Missoula  
Biology; Delta Gamma

GLENN O. LOCKWOOD, Missoula  
Spanish; Phi Delta Theta; basketball 1, 2, 3, 4; captain 4; track 1, 2, 3, 4; Spanish club treasurer 2; president 3; Foreign club 4; Silver Sentinel 4; class president 4; M club 2, 3, 4; Montana trophy winner 3



EVERETT E. LOGAN, Deer Lodge  
Business Administration; Delta Sigma Gamma; basketball 1, 2, 3, 4; Peer Paw 2; Mathematics club; Central Board 3, 4

FRANKLIN A. LONG, Eureka  
Chemistry; Kappa Sigma; Kappa Tau 3, 4; Mathematics club 2, 3, 4; Phi Lambda 2, 3, 4; Mu Epsilon 3; president 4; Messengers 2, 3, 4; Hi-Jinx stage manager 2; Varsity Vodyl stage manager 4



ERVA LOVE, Missoula  
Home Economics; Zeta Chi; Sigma Alpha Iota; May Fete 2; Hi-Jinx 2; Home Economics club; Glee club 1, 2, 3; Choral society 2

IVIE LOVE, Rudyard  
Forestry; Forestry Club; Deids



ALEXANDER MCKERDIE, Bearcreek  
Chemistry

FREDA McCANN, Great Falls  
Journalism; Theta Sigma Phi; treasurer 3; president 4; Morkay Board; Kamin columnist; Varsity Vodyl 1, 2; Glee club 1, 2, 3, 4; Quadrans



FRANK MCCARTHY, Anaconda  
Physical Education; Sigma Chi; football 1, 2, 3, 4; M club; president 4

IRENE McCLELLAND, Williams  
History; Zeta Chi; Quadrans

# THE SENIORS

**VIRGINIA McGLIMPHY, Sumatra**  
 Business Administration, Alpha Phi  
 basketball 2; Cosmopolitan club 2, 3, 4;  
 Spanish club 1, 2; May Pote 3; Quadrans.

**JEANETTE McGRADY, Butte**  
 English, Kappa Alpha Theta, Missions  
 History, Varsity Volley

**JOHN McKay, Novon**  
 Economics and Sociology, Football 1, 2,  
 3, 4, M club 1, M club heavyweight box-  
 ing champion 2, 3, Spanish club 1, 2,  
 Messengers 1, 2, 3, O. T. C. rifle team 1

**FRIDUA McLEMOORE, Helena**  
 Journalism, Sigma Kappa, Theta Sigma  
 Phi, Mathematics club 1, 2, Press club  
 1, 2, 3, May Pote 1, Varsity Volley 1, 2,  
 3; Hi-Jinx 2, swimming 2, Student track  
 1; W. A. A. 1

**DORIS V. McMILLAN, Big Sandy**  
 Business Administration, Sigma Kappa,  
 Caplan hall treasurer, Cosmopolitan club 2,  
 4, president 1, A. W. S. board 2, 4,  
 French club, History 1, Varsity Volley  
 1, 3, quadrans

**BETH MANIS, Hamilton**  
 Home Economics, Alpha Phi, Yeman 2,  
 Home Economics club 1, 2, 3, 4, vice  
 president 3, president 4, Credit, Business  
 manager 1, A. W. S. social  
 service chairman 2, Quadrans 1

**RAUCLIFFE S. MAXEY, Missoula**  
 Journalism, Phi Sigma Kappa, Sigma  
 Delta Chi, Messengers

**GEORGINA MAE MITLEN, Lolo**  
 English, Varsity Volley 1, 2, 3, Hi-Jinx  
 2, 4, Purple Towers 2, May Pote 2, 3,  
 Messengers debate 2, North hall leader 3,  
 Independent Council 3, 4, A. W. S. board  
 1, Senior class committee, Quadrans

**RUSSELL MEYER, Nounah, Wis**  
 Law

**THOMAS EUGENE MOONEY, Missoula**  
 Journalism, Press club 1, 2, 3, 4; asso-  
 ciate editor of Kappa 2, editor 4; sentin-  
 nel staff 3; associate editor 4; Student  
 Sentinel 1; Newman club 2, 4; Sigma  
 Iota Chi 3; president 4; Publications  
 board 1; Independent council 1; Central  
 board 1; Student Union building com-  
 mittee 1







NANCY MORRIS, Home  
English; Alpha Phi.

MARY ALICE MURPHY, Home  
Mathematics; Kappa Alpha Theta.



HARRIET L. NELSON, Sidney  
Business Administration; Kappa Kappa Gamma; transferred from St. Catherine's college; Commerce club vice president; Good Team committee; Quadrons.

RAMONA NOLL, Missoula  
Music; Kappa Delta; Sigma Alpha Epsilon; Treasurer 4; Psi Chi, vice president 2; Music club 1, 2, 3, 4, vice president 3; Glee club 1, 2, 3, 4; May Fete 1, 2, 3; Hi-Linx 3, 4; Quadrons 4.



ELIZABETH A. NOSSALT, Anacosta  
English; Kappa Alpha Theta.

JAMES D. NUTTER, Helena  
Journalism; Alpha Tau Omega; Press club 1, 2, 3, 4; Kalmia associate editor 4; Sentinel staff 4; Sigma Delta Chi.



JOHN T. O'BRIEN, Idaho  
Psychology; Sigma Chi; Psi Chi; South hall manager 4.

ADELAIDE CLANGER, Great Falls  
Physical Education; Delta Delta Delta; Hockey 1; basketball 1, 2, 3, 4; Volley ball 4; Hi-Linx 1, 3; May Fete 1; Junior Glee committee 3; Delta Psi Kappa; W. A. A.; Tennis 2; Junior Prom committee 3; Quadrons.



CHARLES H. O'NEIL, Pasadena, Calif.  
Forestry; Sigma Alpha Epsilon; Debats; track 1, 2, 3, 4; swimming 1, 3, 4; Foresters' Ball committee 3, 4; Senior Respiration committee.

ROBERT M. PATTERSON, Concord  
Business Administration; Sigma Nu; Alpha Kappa Psi; Kappa Kappa Psi; French club 1, 2; track 1; band 2, 3, 4.

**JULIA PATTEN, Corvallis**  
 History, Delta Delta Delta, Hist. Soc. 1, 4,  
 A. W. S. vice-president 1; Pan Hellenic  
 vice-president 1; Mortar Board; Spanish  
 club; quadrants 4.

**DOROTHY STEEL'S MITALA, Missoula**  
 Mathematics, Zeta Chi, Mathematics  
 club, Chess Prom-committee 2; Hist. Soc.  
 2; Quadrants.

**WILLIAM E. PINKNEY, Missoula**  
 Business Administration, Phi Sigma  
 Kappa.

**ELLA POLLENGER, Corvallis**  
 Home Economics, Alpha Phi, Hist. Soc. 1,  
 3; Music club 1, 2; Tahiti 2; Home Eco-  
 nomics club 1, 2, 3, 4; A. W. S. board 2;  
 secretary 3; president 4; Calendar com-  
 mittee 4; Student Union Building com-  
 mittee 4; Mortar Board; quadrants.

**JAMES W. PIERCE, Lodi**  
 Business Administration; Kappa Sigma.

**HELEN PUTNEY, Missoula**  
 History, Alpha Phi, May-Pete 1; Basket-  
 ball 1; Hist. Soc. 1; Spanish club 4; French  
 club 2, 4; Varsity Volley 2; Quadrants 4.

**HELEN BAINVILLE, Crosby, N. D.**  
 Journalism, Gamma Phi Beta, North  
 Dakota Agricultural college 2, 3; swim-  
 ming team at State University 1; Chess  
 club 1, 4; Theta Sigma Phi 4.

**MARGARET ANN RANDALL, Wolf  
 Point**  
 Physical Education, W. A. A. president  
 1; Women's M. club 2, 4; Delta Psi  
 Kappa; quadrants.

**ESSA RANDALL, Wolf Point**  
 Physical Education, Delta Psi Kappa,  
 secretary 1; W. A. A. secretary 1; Women's  
 M. club 2, 4; secretary 3; Independent  
 council 4; quadrants.

**JOHN ROBERTS, Red Lodge**  
 Pharmacy; Kappa Sigma, Kappa Psi;  
 Chemistry club.







**PATRICIA HIGGINS**, Missouri

Journalism, Kappa Alpha Theta, Theta Sigma Phi, secretary 3, Mentor Board 1; Press club 1, 2, 3, 4; French club 2; Newman club 1, 2, 3, 4; Kappa staff 3; associate editor 1; Rooming publicity committee 1; Big Sister chairman 1; Sentinel staff, A. W. S. board 4; Closed Forum publicity 3, 4; Quadrons.

**EVELYN HISEL**, Missouri

Foreign Language, W. A. A. 1, Wesley club 1, 2, 3, 4; secretary 2; Quadrons 1.



**GARRY E. ROBERTSON**, Red Lodge

Education, Sigma Alpha Epsilon

**BILL ROHLFUS**, Sioux Falls, S. D.

Journalism: Phi Delta Theta, Basketball 1, 2, 3, 4, captain 4; M club 2, 3, 4, Hi-Jinx 2; Press club 1, 2, 3, 4, captain; Glee club 1; South Hall president 1; assistant manager 3; Aber Day manager 4; Silent Sentinel.



**MARY ROUSE**, Brady

Mathematics, W. A. A., Hockey 2, Baseball 2, Basketball 3, 2, 3; Mathematics club, French club 2; Pi Mu Epsilon; Quadrons.

**TOM ROWE**, Missouri

Pharmacy; Sigma Chi; transferred from University of Michigan 3; Football 3; tennis 1.



**JOHN F. SASEK**, Herson

Education; transferred from Oregon State college 1; Glee club 1; Spanish club 1.

**WILMA E. SCHUBERT**, Great Falls

History, History 1, 3, 4; Varsity Volley 1, 2, 3; May Pete 1, 2, 3; Gordon Hall proctor 2; Sophomore Dance committee 2; Purple Towers 3; Closed Forum committee 3; Glee club 1, 2, 3, 4; Independent council 3, 4; Senior Girls committee 4; Quadrons 4.



**MARGARET MARY SKATON**, Cascade

Biology, Sigma Kappa; transferred from North Dakota State college 3; German club; Varsity Volley 3; Hi-Jinx 3; A. W. S. board 4; Biology club; Closed Forum committee 4; Quadrons 4.

**ROSE JOSEPHINE SIEWALL**, Kovan

Home Economics, hockey team captain 1, all-star hockey 1; Student Fellowship group secretary 3; Home Economics club, secretary-treasurer 4; Quadrons 1.

MARTHA SUMMERS, Hamilton

English, Alpha Phi Omega, debate 1; Varsity Volley 1, Glee club 1, 2, 3, Psi Chi secretary 2, vice-president 1, May Peps 2, A. W. S. representative 3, Crossed Pines committee 4, Sister Women's Club Committee 4, Quadrans.

JOHN P. SUTHERS, Butte

Forestry, Delta Sigma Lambda, Forestry club 1, 2, 3, 4, president 1, Donalds 2, 4, secretary 1, Phi Sigma Forestry School Rifle club 2, 3, 4.

DAVID PETER SILVA, Honolulu, T. H.  
Education, Sigma Nu

JOSE T. SIMANGAN, Tuguegarao, Cebu, P. I.

Rotary, International club 1, 2, 3, 4, president 3, treasurer 2, 4, Filipino club vice-president 4; secretary-treasurer 2, 3; Fellowship club 1, 2, 3, 4; Wesley club treasurer 2; Spanish club 1; Glee club 2; band 3, 4.

HENRY D. SIMMONS, Butte

Physics, Delta Sigma Lambda

HUBERT A. SIMMONS, JR., Red Lodge  
English and Economics, Delta Sigma Lambda, Interscholastic council 2, 4; secretary-treasurer 3, Varsity Volley 1, 2, Inter-Church council 2, 3; president 1, Kappa Tau.

BERNARD SMITH, Missoula

Business Administration, Kappa Sigma

ROSE MARY SOUTHWORTH, Bosworth  
Latin, Kappa Tau Quadrans

ALFRED E. SPAULDING, Missoula

Forestry, Sigma Phi Epsilon, Silent Sentinels 1, Phi Sigma 2, 4, Donalds 2, vice-president 3, Forestry club 1, 2, 3, 4, Foresters ball committee 2, 3; Chief Push 4; track 2, 3, 4; M. club 2, 3, 4; Forestry Kappa staff 2.

FREDERICK J. STRINGER, Clyde Park

Journalism, Sigma Delta Chi, Press club 1, 2, 3, 4; Kappa sports editor 1, Sentinel sports editor 2, 4.

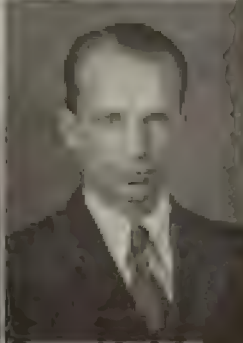






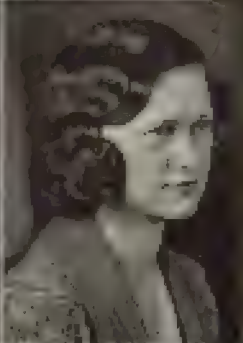
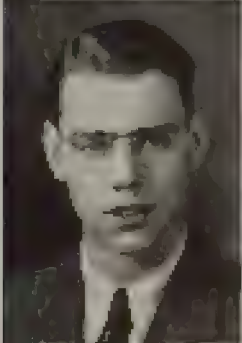
**LOISLANE STEPHENSON**, Missoula  
 Foreign Language; Alpha Phi; Sigma  
 Alpha Iota; secretary 2; president 4;  
 Music club; secretary 3; Grand Personal  
 committee 3; Ho-Jury 1; French club 3,  
 1; Spanish club 1; May Pote 1, 2; Pan-  
 Hellenic council 3, 4; Glee club 3, 4;  
 Quadrons

**NAOMI J. STEINHLBER**, Butte  
 Foreign Language; transferred from Reed  
 college 3; Seven Arts club 3; German  
 club 1; Cercle du Chevalier de la Vierge  
 3, 4; president; Quadrons 4.



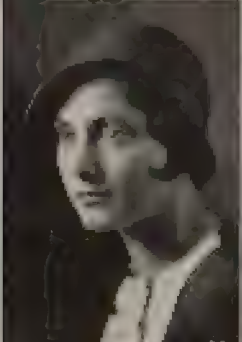
**LEAH MORRIS STEWART**, Helena  
 Journalism; Kappa Kappa Gamma; Theta  
 Sigma Phi; Ho-Jury 1, 3; Kappa staff  
 3, 4; society editor 1; Press club 1, 2, 3, 4;  
 Quadrons 4

**WARREN H. STILLINGS**, Missoula  
 Forestry; Phi Sigma Kappa; Forestry  
 club 1, 2, 3, 4; Rifle club 2, 3, 4; Bands  
 3, 4; Phi Sigma 3, 4; Foresters' Ball com-  
 mittee 3, 4



**REN ST. JOHN**, Stevensville  
 Business Administration; Sigma Nu;  
 Alpha Kappa Psi; treasurer 1, 2, 3, 4;  
 M. Store board 1.

**CLAIRE STOWE**, Missoula  
 Education; Sigma Kappa.



**GEORGIA STUPP**, Billings  
 Biology; Kappa Alpha Theta; North hall  
 club; president 1; proctor 2; Titan 3;  
 trends 1; chairman of women's activities  
 1; class vice president 1; Mortar Board 4;  
 Quadrons.

**EUGENE STENBRIN**, Spokane, Wash.  
 Chemistry and Mathematics; Sigma  
 Alpha Epsilon; Silent Sentinel; Kappa  
 Tau; Pi Mu Epsilon; Bear Paw 2; Tri-  
 deltona committee; debate; teams;  
 Wrangler staff.



**W. EVERETT SULLIVAN**, East Helena  
 Mathematics; Newman club; Mathemat-  
 ics club; Spanish club

**STEWART J. THOMAS**, Missoula  
 Business Administration; Delta Sigma  
 Lambda.

**JOSEPHINE TUPPER**, Missoula  
Phi Kappa; Art League president 3, 4; May Pole 2; Ho-Jax 3; suffery 1; Home Economics club 3, 4; quadrants 4.

**FRANCIS ULLMAN**, Big Timber  
Pharmacy; Alpha Chi Omega; Pan-Hel-  
lenic council 1, 2, 3; A. W. S. secretary  
2, 3; Huskies 3; Tanager 2; Kappa Epsilon;  
Pharmacy club 1, 2, 3; Local Prosser com-  
mittee chairman 3.

**VICTOR VALBEHM**, Great Falls  
Business Administration.

**BRENNE VAUNAKS**, Donnybrook, N. D.  
Journalism; Progress club 1, 2; Newman  
club 1, 2, 3, 4; Press club 1, 2, 3, 4; Vari-  
ety Yodel 1; associate editor of Kaitum  
3, 4; Theta Sigma Phi vice president 3, 4;  
Sentinel staff 4.

**HERBERT VERHEJER**, Missoula  
Business Administration; Sigma Nu;  
assistant business manager the Sentinel  
3; business manager 4; Interfraternity  
council 3, 4; Interfraternity Hall commit-  
tee 4; Alpha Kappa Psi president 4;  
Spanish club 3, 4.

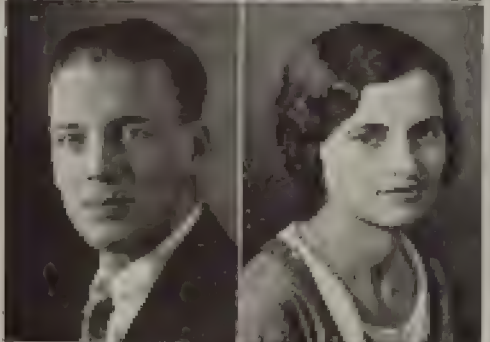
**HAROLD E. VEEHRT**, Mandan  
Pharmacy; Pharmacy club 1, 2, 3; Kappa  
Psi 1, 2, 3; president 3.

**RAYMOND VESITH**, Malin  
Biology; Delta Sigma Lambda.

**VIRGENCIA WELKER**, Fort Belknap  
Chemistry.

**MARJORIE WENDT**, Missoula  
Biology; Alpha Xi Delta; Phi Sigma;  
Quadrants.

**THELMA WENDT**, Billings  
Biology; Alpha Chi Omega.

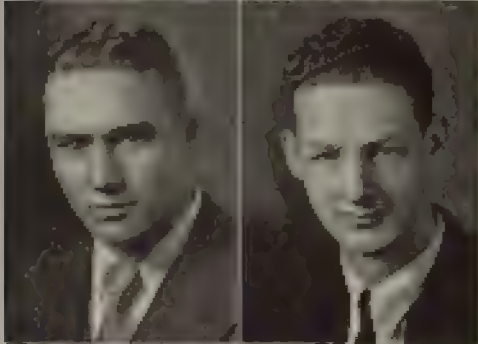






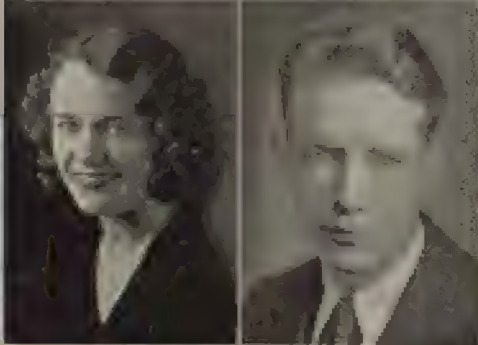
MARLON WILCOX, Missoula  
 Biology; Delta Gamma; Varsity Volley  
 2, 3, 4; Hi-Lins 4; Tanager 2; Spanish club;  
 swimming team 1; track team 1, 2; May  
 Fete 2.

THELMA WOLFE, Missoula  
 English; Kappa Delta; quadrans



ROY E. WOOD, Hayes  
 History; Phi Sigma Kappa; yell king  
 Central Board.

MATTHEW WOODROW, Red Lodge  
 Pharmacy; Alpha Tau Omega; Pharmacy  
 club; Kappa Psi.



MARGARET WYNN, Anaconda  
 Biology; Delta Delta Delta; Hi-Lins 1, 3,  
 May Fete 1, 2; Newman club 1, 2, 3, 4;  
 class secretary 3; Quadron secretary 4.

ROBERT M. DATES, Missoula  
 Journalism; Alpha Tau Omega; Press  
 club; Sentinel art editor 4; Sigma Delta  
 Chi.



ALVIN JAY JACOBSEN, Plentywood  
 Pharmacy; Sigma Alpha Epsilon; Pharmacy  
 club; vice president 2, 3; Kappa Psi; Glee  
 band 1, 2, 3.

BETTY BROWNE, Hayes  
 English; Kappa Kappa Gamma; May Fete 2  
 Hi-Lins 2; Sentinel staff 2; Northwestern  
 university 3; Seven Arts club 4; Quadrans 4

ELIZABETH C. HANSEN, Superior  
 English; Alpha Xi Delta; transferred from  
 Whitman college 3.



Harold Fitzgerald

## Rhodes Scholar

Harold Fitzgerald of Missoula will enter Oxford university this autumn. He has a degree in Economics and Sociology and at present is a junior in the School of Law at the State University.





Stapp

JUNIOR CLASS OFFICERS

Sterling Stapp	-	-	-	-	-	President
Virginia Connolly	.	.	.	.	.	Vice President
Mitchell Sheridan	.	.	.	.	.	Secretary
Maxine Davis	.	.	.	.	.	Treasurer



Connolly



Sheridan



Davis

# Junior Class Roll

Alexander, Edward; Aigle, Helen; Allen, Nat; Archibald, Helen; Averill, Murlin; Bandmann, Sr. Theresita; Barber, Clara; Barnett, Olive; Barton, Franklin; Benish, James; Bentlen, Agnes; Bicknese, Adah; Bidings, Harry; Bitz, Henry; Botzenhardt, August; Bravo, Emma; Brodberg, Ellen; Breen, Mary; Breen, Robert; Brown, Dudley; Browning, Joy; Bussey, Elliott; Bussey, Robert; Button, Paul; Callahan, Marlon; Carr, Edward; Carroll, Edward; Carroll, Kenneth; Chagnon, Raymond; Christolm, Roderick; Clinton, Grace; Coe, Margaret; Cole, Burnett; Colgrove, Roland; Colton, Marguerite; Compton, Frederick; Connolly, Virginia; Cooney, Sarah Lou; Corella, Robert; Cosner, Frances; Coughlin, Catherine; Crane, Leonard; Crevelling, Donald; Crowley, Cole; Cuffe, Marie; Culver, Newton; Cunningham, Dorcas; Curtis, John; Cushman, Dan.

Dahlberg, Alfred; Dautermann, Marjorie; Davenport, William; Davidson, Roy; Davis, Delavan; Davis, Marjorie; Davis, Martha; Deak, Margaret; Diekel, Hermann; Dignan, Tom; Dolbrinz, Edward; Dorsey, Mildred; Duffy, Joseph; Dugal, Mary; Duncan, Helen; Dunlap, Lela; Dunn, Kathleen; Dussault, Eddie; Eickland, Edwin; Eberlein, Dwight; Evenson, Millard; Farmer, Winifred; Fee, Marjorie; Fitzgerald, David; Fitzpatrick, Donna; Fitzpatrick, Ted; Flanagan, Frank; Foot, Betty; Forhan, Lanna; Fossdal, Arne; Foster, Leonard; Fox, Dick; Frelbie, Glenn; Gallagher, Francis; Gallup, Richard; Galusha, Ellen; Gardner, Taylor; Gates, Wright; Good, Francis; Gosswiller, Carley; Griffin, Helen; Groombridge, Margaret.

Hagerty, William; Hale, Lucy; Hall, Rufus; Hanesek, Morris; Hamant, David; Harmon, Louise; Harrigan, Kathleen; Harrington, Catherine; Harrington, James; Harris, Meyer; Hart, Lavina; Hartley, Jane; Hasek, John; Haugen, Ruth; Heagy, Earle; Henriksen, Evelyn; Hesselshwerdt, Joseph; Hinman, Dale; Hogan, Mrs. Mary; Holgren, Robert; Horn, Lynn; Horn, Milton; Houston, John; Hubert, Helen; Huff, Russell; Huffman, Elza; Hutton, Dorothy; Jackson, Arthur; Jennings, Elben; Jensen, Chandler; Johnson, Charles; Johnson, Harry; Jones, Edith; Korkeinen, Tervo; Kolcher, Grana; Kollogg, Perry; Kennedy, Leland; Kennedy, Michael; Kennedy, Raymond; Kiely, Maurice; Kindschy, Doris; Kinney, Russell; Kirton, Stewart; Knudsvig, Garth; Krenn, Genevieve; Kurth, Mary.

Larsen, Helen; Larson, Glenn; Lashy, Joe; Lawrence, Edward; Lehmann, Phyllis; Lohson, Maude; Lonnou, Betty; Leslie, Robert; Lewis, Margaret; Lawton, Rubin; Limpus, Oskar; Lloyd, Glenn; Logan, Thebin; Lord, Kenneth; Lowmyer, John; McCarthy, Frank; McCarty, Marlon; Magnusson, Melvin; Makken, Verna; Martin, Dorothy; Martin, Mary; Mason, Katherine; Matthews, Berton; Mattsson, Harlan; Mercer, Rita; Miller, Lucille; Miller, Willard; Morrell, Fred; Murphy, Margaret; Nash, Jane; Nofsinger, Jane; Norris, George; Noyd, Fred; Oermann, Geraldine; Olson, Roy; Patterson, Phillip; Peterson, Russel; Phalen, Janet; Phelan, Warren; Pitt, Carl; Plantico, Kenneth; Pokorny, Emma; Pritchard, William; Provost, Ruth; Purvis, John.

Quindt, Carter; Raitt, Margaret; Rand, William; Raquel, Marjano; Redson, Margaret; Renshaw, Mrs. Mildred; Rich, Lyle; Richards, Frances; Roberts, Arthur; Robinson, Bert; Robinson, John; Roffler, Hans; Ross, John; Rothenberg, Beatrice; Rovers, Dennis; Rusk, David; Schall, Francis; Schneider, Richard; Schoenhals, Mary; Schroeder, Robert; Scott, Mary Irene; Scott, Wesley; Sheehan, John; Sheridan, Mitchell; Silfost, Oliver; Silverman, Helen; Skoog, Edward; Skulason, Ethel; Smith, Allan; Smith, Helen; Smith, Marion; Smith, Yerna; Smith, Virginia; Smog, Thurlow; Snyder, Stanley; Soenke, Lamen; Southworth, Ruth; Spoor, Jim; Sprague, Mercedes; Stapp, Sterling; Stevens, Lela; Stewart, George; Stewart, Mary Isabel; Stillings, Adeline; Storey, Mary; Story, Leland; Strand, Mary; Strakey, Alice; Strassy, Cornelia; Sweetman, Sylvia.

Tango, Leonard; Taylor, Alice; Taylor, Hartley; Thibodeau, Lee; Thomas, Richard; Thykeson, Robert; Tobin, Tom; Toole, Jack; Towse, George; Trachta, Stanley; Trossman, Iran; Tucker, Alice; Tuland, Ralph; Urdem, Solveig; Vesler, William; Vlasoff, William; Walker, Frances; Warden, Homer; Watson, Clarence; Watson, Russell; Wetherell, Helen; Whitaker, Richard; White, Robert; Wilson, Frank; Woolf, Mary Elizabeth; Yule, Lawrence.





Krause

SOPHOMORE CLASS OFFICERS

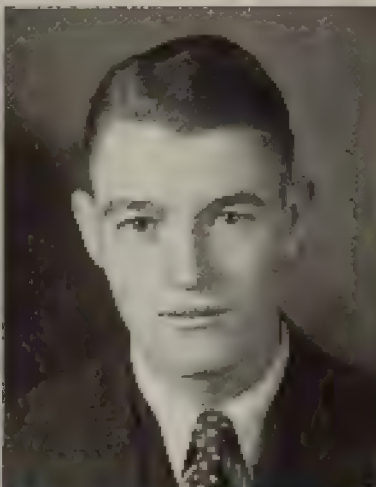
Raymond A. Krause	President
Jane Tucker	Vice President
Olive Midgett	Secretary
Raymond Smalley	Treasurer



Tucker



Midgett



Smalley

# Sophomore Class Roll

Adams, Jane; Agatha, Victor; Alders, Ellen; Allen, Ernest; Allen, Howard; Andrews, Lloyd; Armour, Juanita; Arniss, Mary; Athorstone, Helen; Bailey, Kathryn; Bainton, Jack; Bolgard, Evelyn; Barry, Maurice; Bell, William; Bills, John; Blair, James; Boehm, Marybeth; Bolshan, George; Bollean, Joseph; Borgo, Nemesio; Boyd, James; Brucke, Marion; Broadwater, Edward; Brookway, Phyllis Mrs.; Brown, Clark; Bruckhauser, Lynda Jane; Burton, Elizabeth; Busby, Martha; Calkins, Nessley; Canning, Roland; Carruthers, Elizabeth; Castles, Mary; Caven, Arthur; Clark, Robert; Clarke, Robert; Claybough, Imogene; Coleman, Tom; Cook, Fred; Cooney, Virginia; Corallo, Mary Thaffie; Coriell, Lewis; Coughlin, Robert; Carty, Jean Siderfin Mrs.; Casper, Alvy; Couch, Mildred; Coggill, Rhoda; Coyle, Walter; Crego, Clyde; Crosson, Cyril; Cruikshank, Margaret; Crumplefield, Mufford.

Dahlin, John; Dabrows, William; DeMuelier, Florence; Dohi, Mary; Dolia, Francis; Donagan, Edwin; Dowdle, Tom; Dresskell, Wilfred; Dunham, Jeannette; Dunham, Robert; Dunn, Joseph; Eamon, Kathryn; Eastman, Harriet; Eckley, Kermit; Elder, Margaret; Eldering, Jeannette; Epstein, Esther; Erickson, William; Eger, John; Eick, John; Farmer, Elizabeth; Fitzgerald, Kathlene; Flasted, Edith; Fletcher, Estelle; Flahtner, Fern; Flynn, George; Foley, George; Fox, Lehman; Francisson, Mauri; Frankel, Jerome; Franks, Laura; Frauder, Percy; Fredrickson, Elvener; Froeman, Roland; Gates, Maxwell; Gauthier, Eldor; Gilbert, Vera; Gillies, Herist; Glead, Yehria; Gomeritz, Louis; Good, Cecil; Gough, Newell; Graham, Sarah; Greene, Lina; Grierson, John; Gullickson, Howard.

Hague, Lloyd; Hair, Wilbur; Halvorson, Elson; Hanford, Marion; Harben, Louise; Harben, Leonard; Harper, Hazel; Harrington, Florence; Harrison, Allan; Hawke, William; Hebard, Billy; Henson, William; Higgins, Raymond; Hill, Stanley; Hipman, John; Holstrom, Charles; Horsky, Flora; Horton, Doris; Hostetter, Glenn; Howard, John; Hutton, Eugene; Hort, Lyle; Jacobsen, Vera; Jefferson, Jack; Jennings, Sylvia; Johnson, Grace; Johnson, James; Johnson, Robert; Johnson, Ruth; Jones, James; Jones, Marjorie; Jones, Myers; Jones, Robert; Karnes, Richard; Keil, Madeline; Kelleher, Perry; Kelly, Margaret; Kemp, Louise; Kerin, Marybeth; Kimball, Martha; Kimpel, Archibald; Kinonen, Kayko; Kirby, James; Knapf, Aaron; Kudght, Margaret; Kuhlhase, Harold; Koyl, George; Krauss, Raymond; Krebs, Charles; Kuka, Leonard; Kurtz, Jay.

LaFond, Russell; Lake, Richard; Lamb, Albee; Lantz, Carl; Larson, Gladys; Larson, Elmer; Lash, Corbly; Layfield, Robert; Leubke, Henry; Lentz, Esther; Lesage, Frank; Lussell, Eva; Lewis, Olive; Little, Corliss; Long, George; Lyman, Chadmer; McCall, Rodney; McCallum, Verne; McCormick, Charles; McDaniel, Lewis; McElroy, Joan; McKay, Margaret; McLanigan, Dorothy; MacDonald, Elvener; MacDonald, Sister Pius; MacKenzie, Allan; Malone, Francis; Malone, Maryella; Martin, Katherine; Marlowe, Elmer; Martin, Laura; Martinez, Jose; Matthews, Edith; Matson, Elmer; Matson, John; Mayo, Gladys; Mend, Catherine; Mendoza, John; Midgett, Olive; Miles, Sam; Miller, Dorothy; Miller, Frederick; Miller, Sherman; Mills, Emily; Mills, Phyllis; Milne, Adah; Minnicham, Margery; Moore, Sadie; Morin, Glenn; Morris, Winifred; Murphy, Michael.

Nelson, H.; Nislar, F.; Nutsinger, R.; Nordstrom, A.; Novak, S.; O'Brien, R.; Oliver, A.; Olson, R.; Olson, H.; O'Malley, R.; O'Neil, B.; Oosterboek, R.; O'Rourke, R.; Parkinson, J.; Patterson, P.; Pearson, C.; Peterson, A.; Pipetti, V.; Place, H.; Porter, C.; Pracher, L.; Prendergast, R.; Rabbit, Mys. H.; Rabson, L.; Ramon, E.; Reddick, G.; Remington, C.; Reynolds, L.; Rhoades, R.; Rendell, R.; Ritzney, V.; Rimel, R.; Ritvey, P.; Roberts, J.; Robertson, G.; Robertson, M.; Robinson, J.; Roe, J.; Rogers, D.; Rogness, R.; Roskie, G.; Rosler, D.; Rotering, N.; Ruegamer, J.; Rutz, L.; Rygg, M.; St. George, V.; Sanders, C.; Sauer, S.; Schnell, R.; Schmit, G.; Schrock, C.

Schroeder, H.; Schullz, J.; Shaw, P.; Sherick, R.; Shichts, E.; Smalley, R.; Smith, R.; Smith, K.; Snyder, H.; Somerville, R.; Spafford, R.; Spencer, H.; Stratler, J.; Stansberry, R.; Staudon, R.; Stearns, H.; Steensland, L.; Steinbrunn, F.; Stephens, G.; Stephenson, A.; Sterling, S.; Stucker, W.; Stratton, S.; Sullivan, M.; Swenberg, S.; Swartz, D.; Swenson, T.; Taxoner, D.; Taylor, D.; Taylor, T.; Thiboway, H.; Thomas, H.; Thompson, M.; Tibbs, H.; Tobin, J.; Tucker, J.; Tuvo, O.; Tyree, A.; Ullman, F.; Vance, L.; Van Vorst, R.; VanWahl, C.; Vitro, A.; Wade, W.; Wagner, B.; Wagner, J.; Waldard, H.; Walker, C.; Wallace, R.; Warden, G.; Welsol, V.; Welson, E.; Wenz, M.; White, P.; White, T.; Whitlam, Mrs. B.; Wickware, R.; Wilcox, G.; Wilcox, W.; Wilkins, J.; Wilkinson, M.; Wilkinson, R.; Williams, W.; Wild, R.; Wood, A.; Woodcock, C.; Woodward, K.; Zedler, R.





Blewett

FRESHMAN CLASS OFFICERS

Alexander Blewett	President
Isabelle Spitzer	Vice President
Ruth Polleys	Secretary
James G. Brown	Treasurer



Spitzer

Polleys

Brown

# Freshman Class Roll

Abb, Adrich, Algie, Almich, Ambrose, Amundson, L. Anderson, B. Anderson, B. Anderson, England, Ashury, Avery, Baffer, Baguistan, Baker, Bakke, Baldwin, Barber, Barker, H. Barnes, O. Barnes, K. Barnes, Barnhill, Babeman, Bauer, Bengarie, Beardsley, B. Bell, K. Bell, R. W. Bell, Bonish, Benson, Benton, Bernhard, Bossey, Bischoff, Bjornely, Black, Blankenship, Blaskovich, Blewett, Boe, Bohlander, Bonner, Borg, Bower, Bowman, Boyer, Breen, Brickson, Brooks, Brophy, D. Brown, G. Brown, J. C. Brown, J. G. Brown, J. Brown, S. Brown, Bufka, Burg, Butler, Button, E. Byrne, L. Byrne.

Caird, Cambron, Cameron, A. Campbell, E. Campbell, Carline, Carpenter, Castles, Castor, Cerise, Chapman, Charette, Christie, Christophersen, Clapp, Clark, Clarke, Clary, Cahn, Conkling, Conrad, Copping, Corr, Coughlin, Coughill, Cowperthwaite, Crawford, Crego, Crossman, Crowley, Cunniff, Currie, A. Cyr, E. Cyr, Daggott, Dahl, R. Davidson, W. Davidson, Davis, deMars, A. Deschamps, E. Deschamps, Diekel, Dodge, Donlan, Dumaine, Drost, Duff, Duffy, D. Duncan, Donald Duncan, Dwyer, Ede, Elliot, Elsethagen, Emery, Emds, Eplin, Epperson, G. Erickson, M. Erickson, R. Erickson, Estes, A. Evans, K. Evans, Falmann, Farnsworth, Ferrierly Flanagan, Fletcher, Foon, Fraser, Fredlund, Freeborg, Furthug, Gaines, Gallbreath, Garrison, Garvin, Gaskins, George, Geyer, Gilder, Gilham, Gillespie, Gilman, Gleson, Glose, Goodman, Goodwin, Gordon, Graffon, Grande, Graves, Graydon, Griffin, Griffith, Grossinger, Gutched,

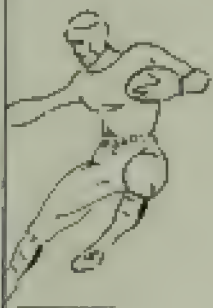
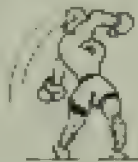
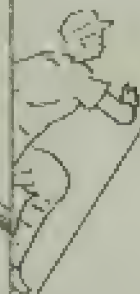
Hagins, Hagne, Hahn, Haines, G. Hall, L. Hall, H. Hamilton, R. Hamilton, R. Hammett, M. Hammett, Hartscock, Hansen, Hanson, Hardison, Harmon, Harper, R. Harris, W. Harris, Harter, Hartsell, Hoskins, Hungen, Hayes, Hayward, Hazelbaker, Hazelton, Head, Hebert, Heckert, Hedine, Helean, Heber, Hengren, Henningsen, Henriksen, Herrick, Herweg, Hewitt, Hewson, Hilman, Himaland, Hirst, Hobbins, Hoblitt, Hoffner, Holmes, Hoster, House, Howe, Hoven, Howatson Huffman, Hughes, Hunt, Hupper, Isanson, Jacobs, Jefferson, Jeffrey, Jensen, M. A. Johnson, M. J. Johnson, M. Johnson, Johnston, F. Jones, R. Jones, Joel, Junel, Kautz, Karsted, Keach, Kellman, Keith, Kellner, A. Kenfield, O. Kenfield, Kerns, King, Kingsbury, Kinne, Kirley, B. Kitt, M. Kitt, Klomann, Kniffen, Knight, Knudde, Kuster,

A. LaCasse, D. LaCasse, M. LaCasse, Lacklen, Lake, Lambert, Laney, Landall, Langdale, Larzenborfer, LaPorte, R. Larson, R. Larson, Lash, Lander, Lawden, Lawollyn, Lien, Lindborg, Link, E. Little, J. Little, Long, Lousen, Lowe, McCormick, McDonald, McDowall, McKenzie, McKittick, McLamahan, McLaughlin, McNeill, McPhail, MeQueen, Madsen, Maloney, Mallon, Malone, Manis, Manley, Marcyus, Marrs, Marshall, Martin, Mathews, Maughan, Maury, Meeker, Messner, Metcalf, Miles, H. Miller, P. Miller, V. Miller, Mills, Mix, Montgomery, Moorlady, Moore, Morrell, Morrison, Moulton, Murphy, Myers, Nelson, Nooney, Nordstrom, Noren, B. O'Brien, J. O'Brien, Colten, O'Neil, O'Donnell, Osh, Ogg, O'Laughlin, O'Leary, O'Rourke, Palin, Patterson, Peden, Pederson, Peto, Periman, Perry, Peschel, Petersen, Pettus, Pew, Phillips, E. Pherey, M. Phoney, Pilling, Pollard, Pollard, Polleys, Pollinger, Powers, Prentiss, Proctor, Praost,

Quenstrom, Quintan, Raff, Ramey, Raul, Roa, Reardon, Rhinehart, Rhude, Richardson, Robbins, Roberts, H. Robinson, J. Robinson, Rochester, Roe, Rebel, Rood, Russell, Rutlerford, St. Sire, Sample, Sautan, Sayatovich, Saylor, Schaaf, Scheffer, Schlicher, Schmell, Schnell, Scribner, Sell, Seymore, Sheehan, Shaffer, Shaver, Shaw, Shea, Shelbenger, Sheridan, Smaugan, Simons, Skavia, Skordal, Slesher, Charlotte Smith, A. Smith, D. Smith, E. Smith, G. Smith, J. Smith, P. Smith, R. Smith, Soliven, Spafford, Sparrow, A. Spaulding, K. Spaulding, Specker, Spitzer, Sproul, Spurlock, Squires, Steele, C. Stein, E. Stein, Steinitz, Stempke, Stevens, Stevenson, Stotts, Stovernd, Strand, Strauss, Strudbeck, Strupp, Sullivan, Swango, Swanson, Taft, Tamplin, Tangen, C. Taylor, N. Taylor, O. Taylor, R. Taylor, Teegarden, Terers, Tibbsham, Thomson, Tilzey, Towle, Trayler, Trekel, Tobbs, Tutley, Urdem, Vaerna, Vandensen, Veleber, Vessel, Wagner, Walde, Walker, Walkby, Warden, Watkins, Wardand, Wayne, Welch, Wells, Welton, Wemple, Werner, West, White, Whitesell, Whiteinghill, Wilburn, A. Wilcox, V. Wilcox, Wiltschur, Wilkins, Wilson, Wosl, W. Woods, Wm. Woods, Worden, Wren, Ylmen, Youlden, Young, Zadra, Zelmner.



# ATHLETICS



# M



Oakes



Stewart

## Coaching Staff

Bernard F. Oakes, formerly of Nebraska and a graduate of the University of Illinois, is completing his first year here as head football coach.

Director of Athletics J. W. Stewart this year resigned from his duties after ten years' service.

Harry Adams is the head of intramural sports and Adolph Lewandowski, who came to Montana with Coach Oakes, has charge of freshman football and basketball. Ted Rule and Ted Mellinger were assistant football coaches.



Adams

Lewandowski

Oakes

Stewart





Hendon

Mumm

Hulse

## Athletic Board

Campus athletic activities are guided by the Athletic board, composed of Bob Hendon, president of the A. S. U. M. and chairman; Marjorie Mumm, secretary of the A. S. U. M., secretary; Roy Wood, yell king; J. W. Stewart, director of athletics; E. K. Badgley, student auditor, and Oakley Coffee, representing the alumni.

The duties of the board are to regulate and supervise athletic programs and keep them in harmony with the policy of the institution. They recommend candidates for athletic managers, pass final decision on athletic awards, ratify schedules and control the expenditures on State University sports.



Stewart

Coffee

Badgley



Brogley

Randall

Woodfolk

## Minor Sports Board

Minor sports adopted as a part of the regular State University athletic program in the fall of 1928, attracted increased attention this spring with the revival of interfraternity sports competition after nine years of smouldering in the ashes of discontent and disagreement. Harry Adams, director of intramural athletics for men, controls interfraternity athletics, which include baseball, tennis, golf and horseshoes.

The minor sports program of the State University includes boxing, wrestling, swimming, fencing, tennis and golf. Eligibility standards are the same as those of major sports.



Adams

Wood

Hendon



# FOOTBALL





## Varsity Football Team

Handicapped during the first season by newness here and not having had previous experience with the men, Bernard F. Oakes, varsity coach, completed his first year at the State University of Montana. The season was rather discouraging so far as the game scores were concerned but the squad soon gained a reputation as a hard, scrapping, fighting team.

The three high spots in the football season were: The Idaho game, with Montana's phenomenal rally in the last period; the Washington game, when Montana held the superior western team to a 13 to 0 score, and the following Saturday when it beat and trampled the Montana State players by a score of 37 to 6.



Frank Holmberg,  
Varsity Manager

The State University team underwent a practice in the spring of 1932 and many likely prospects were uncovered for the fall season. With the return of lettermen and men with experience next fall, Montana can look forward to a real football season. Frank Holmberg of Anaconda was varsity manager during the season.





Action during the St. Charles game.

## Montana-St. Charles Game

Outweighed, pushed about by a lethargic Grizzly, Mount St. Charles held onto a two point lead gained the first quarter to defeat the State University for the first time in history, 2-0.

After a bad pass from center, Fox, Montana, attempted to run the ball out but was smashed by Donich, Saint tackle, for a safety.

During the second half, the alarmed Grizzlies opened an air attack but watchful Saints batted the ball down. Only one of 18 passes was completed during the barrage.

The defeat wiped out the Grizzlies' chance for a state football title, the Hilltoppers later defeating Montana State College.



Jerry Evans,  
Game Captain

# ATHLETICS



Hartwick  
 (Not available)  
 Curran

Bills  
 Davis  
 Curran

Brown  
 Brown  
 Cox





Stopped at Washington

## Montana-Washington Game



"Hank" Murray,  
Game Captain

Not yet at the season's height of playing form, the Grizzlies were battered down by Washington Huskies in the second game of the year, 25-0. Bledsee, Hufford, Wolcott and Franklin each scored a touchdown in the game.

Montana made two threats, the first in the opening quarter and the other in the final minutes of play. On both occasions the Grizzlies rammed and passed their way to the Huskies' 8-yard line but could penetrate no farther.

Crowley, Meeker, Fox and Dailey were outstanding for Montana, while the ends and tackles showed great improvement over the week before.

In statistics, Washington outclassed Montana in every way.

# ALL STAR LINE



Casper  
Dunley  
Howler

Grealey  
Kesterson  
Higgins

Enchilberg  
Fox  
Henderson





Dwiley Hits the Line in the Idaho Game

## Montana-Idaho Game

Rampant Grizzlies, starting slowly, tore the Vandal line to shreds, scored three successive touchdowns in the last 12 minutes of play but were cut short of victory, 21-19.

Montana lost a probable touchdown in the first quarter when Caven, halfback, fumbled as he crossed the goal line.

In the last quarter, the Grizzlies shoved Hinman across the line for the first score. A little while later Caven sifted through for nine yards and a second touchdown. Caven missed both kicks.

A drive from the 44-yard line netted another tally and Fox kicked goal.



Lowell Dudley,  
Game Captain

# THE PLAYERS



Kelka  
McCall  
MacKenzie

Isleborn  
McCarthy  
Murray

Lynn  
McKay  
Meeker





Cowen Starts the W. S. C. End

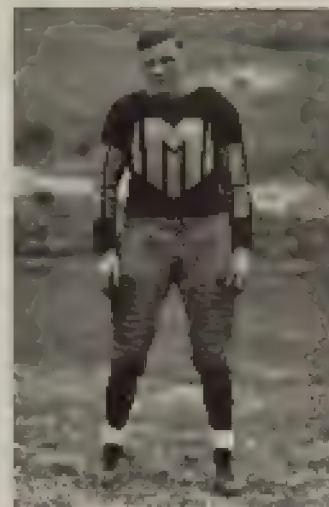
## Montana-W. S. C. Game

Two sudden drives by a desperate Cougar in the fourth quarter broke up a hard-fought football game on Dornblaser field, 13-0. Kelley scored the first on a pass and Bendele drove through the Montana wall for the second touchdown.

Montana outgained the Cougars nine downs to seven, threatened twice, but was always stopped just short of the scoring line.

Washington State resorted to but few passes but their accuracy was demoralizing to the Montana team.

The defeat was costly for Montana. Dailey, fullback, sprained his ankle and Crowley, quarterback, suffered a minor concussion.



Russel Peterson,  
Game Captain

# THE ALL-STAR



Peterson  
Sexton  
Video

Prather  
Snyder  
Williams

Reynolds  
Stacy  
Wilson



Lyman Scores in the Montana State Game.

## Montana-Montana State Game

Completely outclassing the ancient rivals from Montana State College, the Grizzlies ran wild to defeat the Bobcats, 37-6, at Clark park, Butte. Four touchdowns by Dailey, one by Caven and one by Lyman, who added the conversion, spelled the victory.

Parke, diminutive quarterback for the Bobcats, escaped the Grizzly defense for the lone Montana State College score late in the last quarter.

A crowd of about seven thousand persons watched the Grizzlies rout the Bobcats. The beating was the second worst that the Grizzlies have dealt to the Bobcats, upsetting all predictions as to the Grizzlies' power.



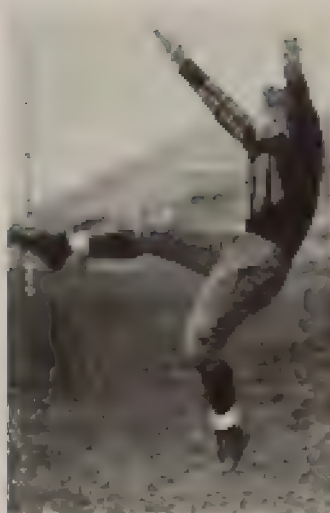
Frank McWhirley,  
Game Captain





Grizzlies Punt on the Oregon State Field

## Montana-O. S. C. Game



Walter Cox,  
Ore. Captain

Oregon State Beavers, calm yet decisive on attack when within scoring range, downed Montana, 19-0, on Bell field. Both teams were on par in rushing and passing yardage. Superior punting and returning of kicks gave the Beavers a decided edge. Both teams made four first downs; Oregon had a six-yard advantage on rushing and one yard on passing.

Several times Montana backs, after trying the heavy O. S. C. line, would suddenly get in the open only to fall down with a touchdown in sight.

The Beavers scored late in the first quarter and twice in the fourth quarter.



National Champions Return a Grizzly Kick

## Montana-U. S. C. Game

Later national champions, Southern California displayed overwhelming power drives with a fair passing attack in downing the Grizzlies, 69-0. The 'Trojans' power was unstoppable for any length of time. The Grizzlies were unable to puncture successfully the Trojan line.

Long runs accounted for the most of the Trojan scores. Pinckert raced 81 yards for a touchdown, the longest run of the day. He totalled 110 yards in three plays.

Reynolds was outstanding during the afternoon for his punting exhibition, outclassing that displayed by the men of Troy.

Murray, Peterson, McCarthy and Cox, playing their last game, were outclassed by the sheer power of the Trojans.

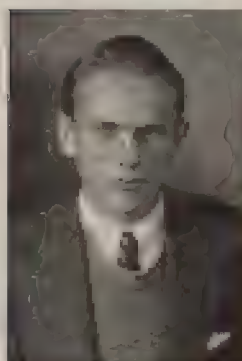


Leonard Carlson,  
Game Captain



## Freshman Football Squad

Cub football prospects turned out nearly one hundred strong at Coach A. J. Lewandowski's first call, with a wealth of material in sight. Thirty-six men, the largest number to receive freshman sweaters, were awarded numerals at the end of the season. Previously the high mark had been twenty-eight.



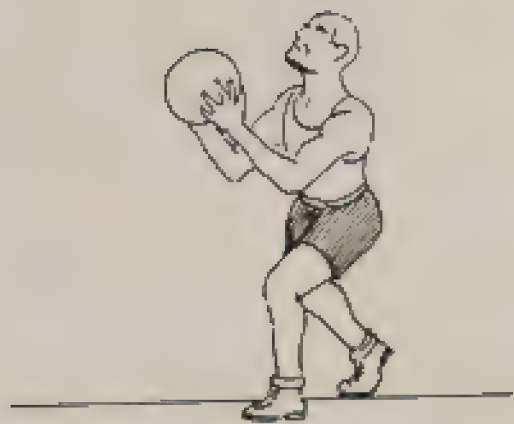
Mr. Flint,  
Manager

The Cubs, in their only game of the season, defeated the Bobkittens, 40 to 6 at Bozeman, November 7. The game was featured by long passes and brilliant runs. Cub stars, Hileman, Vesel, Duffy, Swanson and Rhinehart, on the receiving end, used both Cub and Bobkitten passes to make it a spectacular and one-sided game.

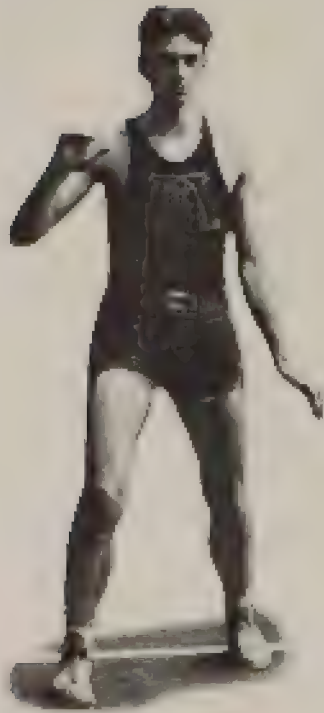
The lone Kitten touchdown came in the last quarter with all of the Cub substitutes playing. Previous to this victory no State University freshman football team had ever won a game at Bozeman.



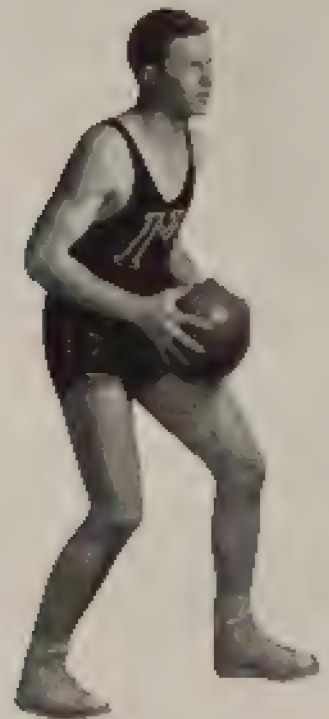
# BASKETBALL



# Varsity Basketball



Glenn Lockwood,  
Captain



Lloyd Andrews,  
Captain



Standing—Thompson, Hinman, Dahlberg, Lyman, Murray, Caven, Fitzgerald, Patterson  
(manager)

Seated—Steenland, Erickson, Andrews, Lockwood, Jones, Lounn, Krause



Andrews

Caven

Holliman

## Grizzly Basketball Season

Montana's basketball season started in a very inconspicuous manner—four straight defeats—but ended the season with a split two-game series here with Montana State College that had about two thousand fans yelling hysterically.

The squad suffered one misfortune after another. Jack McDonald left school; Dick Fox, guard last year, underwent an operation. Then influenza at different times incapacitated most of the team.

The Vandals grabbed two contests at the State University. On the first



Ericksen

Fitzgerald

Hirshon



# 1925-26



Jones



Krause



Larkwood

night they fought hard to win, 44-40, and then turned on the Grizzlies the next night, beating them 41-27. Everett Logan and Al Dahlberg made 13 and 11 points respectively the first night but Idaho found the basket twice too often.

When the Grizzly invaded the Palouse country, he was beaten back 49-22 by Idaho, and 54-25 by Washington State College. Again Montana was overwhelmed twice by the Cougar, who thundered through the Grizzlies, 52-36, and 60-31. Rogers, Gordon and Holsten proved too elusive and accurate.

After a week's rest, the Grizzlies wrestled a game from Gonzaga, 33-27.



Logan



Lyman



Murray



Stensland



Thompson



Patterson

and then the Bulldogs won the second contest, 41-33. It was Montana's first victory in seven starts and the campus denizens cheered hopefully.

Montana State College assured itself of the retention of the state title as the Bobcats out-scored the Grizzlies, 40-34, and 30-20, but not without a struggle. The second night the score had been tied three times but always the Bobcats had the power to pull away. Wendt of the State College scored 19 points the first game but in the second contest he was shut off with but one point, Buzzetti scoring 18.

The Huskies pounded out two victories over the Grizzlies, 44-16, and 34-14 at Seattle. Once more it was a case of being clearly outclassed, which coupled with the long journey, spelled defeat.

While on the coast tour, Grizzlies dropped two games to Whitman by scores of 29-28 and 38-31. But apparently tired of losing, the State University team ended the tour with a brace of victories over Gonzaga, 31-30 and 28-27.

Just previous to the Oredigger-Grizzly games, Captain Glenn Lockwood suffered an attack of influenza and Jimmy Jones developed heart trouble. But replacements filled in capably and the Grizzlies took two more games, 39-29 in the overtime period, and 45-36.

The State University captured the second game of the Montana State College series here, 43-30, but lost the first, 43-37, before a huge crowd. Both teams played nip and tuck basketball and it was a slam-bang battle all the way. Montana substitutes who were rushed in stood staunchly in the way of the Bobcat offense and in both games they contributed heroic support. Murray, playing his last game for the Grizzly squad, was outstanding at guard. Captain Lockwood was forced to sit on the sidelines on account of illness.



Standing—Fox, Smith, Holmes, Carson, Blaskovich, Lockley, Kendrick, Taylor, Lewandowski (coach)  
 Seated—Hesse, Hartsell, Brown, Emery, Frisbie, Hileman

## Freshman Basketball

Cub basketball men, under direction of Coach A. J. Lewandowski, averaged 40  $\frac{1}{2}$  points per game to win eight games during a short season. Defense was a minor part in the game, both guards and forwards taking part in the scoring.

The Cubs defeated Fort Missoula twice and won one game each from the Orange Crush, All Star, Idle Hour, Alsteens, Missoula county high school and Boettcher quint.



Lehman Fox,  
 Manager

During the season, the freshmen scored a total of 323 points to 128 points for their opponents. Albert Heller took the scoring honors in six games with Jimmy Brown and Glen Frisbie each being high-point man in one of the other games.

The consistent playing of Naseby Rhinehart, Cal Emery, Albert Heller, William Hileman, James Brown and Glen Frisbie was a great contributing factor in the Cub success.



# TRACK





Top Row—Spaulding, Gayon, Lockwood, Peterson, Reynolds, Murray, Towner.  
 Standing—Ludlberg, McDaniel, Agutter, Wickwire, Fickertman, Good, Bossler, J. White,  
 Glenn, Flint, O'Neil.  
 Seated—Robertson, Stearns, Blanton, Hills, Watson, B. White, Smalley, Covington, Stearnland,  
 Griffin.

## Varsity Track

Montana swept through the State Intercollegiate track meet with a total of 86 1/3 points in 1931. Montana State College took second with 39 points. A soggy track kept the men from breaking any race records but Lockwood threw the javelin 186 feet 11 inches for a new state record.

Records fell like raindrops in April when Idaho defeated the State University, 71-60, on Dornblaser field. Lockwood boosted the javelin record to 190 feet 9 inches. Nelson lifted his high jump record to 6 feet 1 1/2 inches, and Ruth established a new record in the broad jump at 22 feet 5 3/4 inches. Idaho set two new records for that state in the shot put and the high hurdles.

Watson won both the mile and the two-mile runs with a smooth style which astonished Anderson, Vandal coach, but pleased Grizzly backers. Montana won the relay in 3 minutes 32.1 seconds.



Lawrence Nuff,  
 Manager

Montana received nine points from one first, one third and two fourths in the northern division of the Pacific coast conference track meet. Bob Nelson cleared the bar at 6 feet 1 inch for a first but tipped the stick off on a try for a new record at one inch higher. Clarence Watson took third in the two-mile run after a fast sprint on the homestretch. Harold Ruth leaped 21 feet 9 3/4 inches for a fourth in the broad jump and Glenn Lockwood threw the javelin 187 feet 1 inch for another fourth.

Five records toppled as the meet developed into the



Covington



White



Watson



Lockwood

fastest that has ever been held by northern division schools. Washington took first with 60½ points. Montana placed fifth, just above Idaho.

Ten men received letters for their efforts during the 1931 season. They were: Elbert Covington, Bob White, Don Stevlingson, Clarence Watson, Glenn Lockwood, Harold Ruth, Bob Nelson, Bob Parmenter, Emile Percy and Al Flint. Of this group Covington, White, Watson, Lockwood and Flint are members of this year's track team. Archie Grover and Emile Percy captained the track team last year. This year no captain was chosen.

Under usual weather conditions, Coach J. W. Stewart began to bring his men along rapidly after the first two weeks of practice. The discus men



Percy Throws the Shot



Watson Wins a Thriller





Cox

Crego

Flint

Griffin

developed the most rapidly of the squad, early in the season throwing the platter more than 130 feet.

As the season opened it appeared that Montana would be strong in at least three events—the mile and half-mile runs and the javelin throw. On his record of the year previous it looked as though Clarence Watson would go far in the conference circles. Lockwood, it was thought, would break his own state record and cause some misery for javelin men in the conference. White, although beaten by Thomas of Idaho by one stride in the half-mile last year with the clock at 2:02.3, has developed into a dangerous runner.

Through an agreement between the coaches, the freshman athletes were

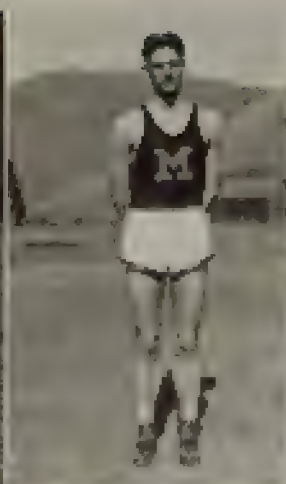


Flint Throws

Idaho Leads in the Hurdles



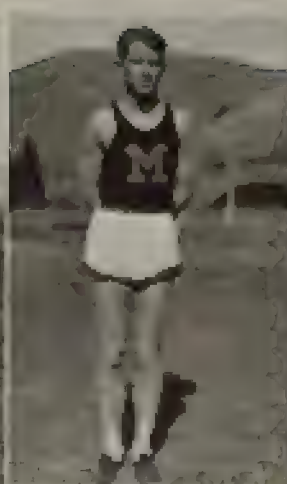
Hawke



Lookwood



Murray



O'Neil

allowed to take part in spring football practice and the upperclassmen to compete on the track team. After football was over the freshmen appeared on Dornblaser cinders for their workouts. In this way possible point winners on the track would not be hampered by having to attend sessions of the two sports. Freshmen, also, would get acquainted with Coach Oakes' style of football before they became eligible for the varsity.

A list of this year's track men shows: Sprints—Monte Robertson, Fred Griffin, John Bills; high hurdles—Al Spaulding, Art Caven, Billy Vickerman; low hurdles—Victor Agather, Art Caven and Al Spaulding; 440-yard dash—Elbert Covington, John Bills, Owen Loftsgaarden and Jack White; half-mile run—Bob White, Charles O'Neil and Armin Glenn; mile



Lookwood Puts It Out



Covington Breaks the Tape

# THE STATE



Peterson

Reynolds

Robertson

Rossiter

run—Clarence Watson, Ray Smalley and Robert Wickware; two-mile run—Clarence Watson, Lewis Steensland, Tom Taylor and Fred Benson.

Those trying out for field events are: Pole vault—Billy Burke, Hugh Lemire, Lewis McDaniel and Dave Rossiter; high jump—Billy Vickerman, Francis Good, Dave Rossiter, Al Dahlberg and Jack Bainton; shot put—Henry Murray, Russel Peterson, Monte Reynolds and Charles Bell; discus throw—Walter Cox, Russel Peterson, Henry Murray, Clyde Crego and Monte Reynolds; javelin—Glenn Lockwood, Leonard Schulz and Bill Hawke; broad jump—Monte Robertson, Al Flint and Jack Bainton.

Montana competed in four meets with outside schools—the Montana intercollegiate meet here, the triangular meet with Washington State College



Burke Up and Over

A Close Dash Finish



# THE STATE



Spending

Watson

B. White

J. White

and Idaho, a dual meet with Idaho here and the northern division of the Pacific coast conference meet.

For the coming year Montana's best prospects lie in Robertson who should score in the broad jump and the dashes. Clarence Watson and Bob White in the distance and middle distance runs respectively. Covington should be able to make some good time in the 440-yard dash and Peterson. Cox and Murray are looking good in the weight events. Bill Hawke should come forward in the javelin due to Lockwood's ineligibility.

This year's track team is the last State University team that will be coached by J. W. Stewart as the vacancy left open by his resignation will be filled by Harry Adams.



Nelson at Six Feet

Stevenson to White



Top Row—McPhail, Periman, Strand, Barnes, Duff.

Standing—Simons, W. Wood, Trueman, Casler, Gilbert, Kerns, Hughes, White, Griffith, C. Plonsson.

Seated—Brugton, West, Coffey, King, Saylor, Shubert, Dwyer, O'Donnell, Miller.

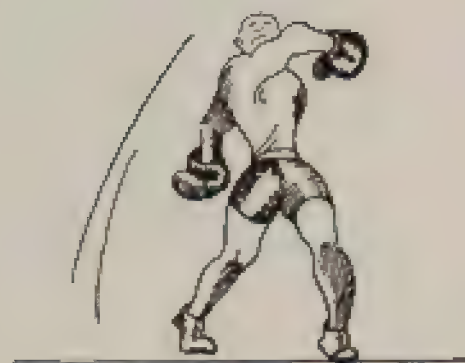
## Freshman Track

With several Interscholastic Track Meet point-winners from previous years on the Cub track squad, Coach J. W. Stewart was optimistic from the start about their possibilities. The Cubs worked out with the varsity men, going through their paces simultaneously. This, Stewart believed, would give the freshmen a chance to see what they will be expected to do as varsity material.

Kenneth Duff, former Butte Central track star, and Roy Peden, Miles City sprint flash and holder of the 100-yard dash record, waged a continual dual in the sprints. Dave Duncan, winner of the half-mile and mile runs in the 1931 Interscholastic, was outstanding in those races. Rudy Saylor, point winner for Missoula county high school last year in the annual high school meet, showed well against the varsity this year.

The Cubs did not enter into competition with any outsiders. Some of them did, however, enter the interclass and interfraternity track meets.

# INTRAMURAL







T. Cooney Sheridan Malone Kuka Myers Benson Banfield

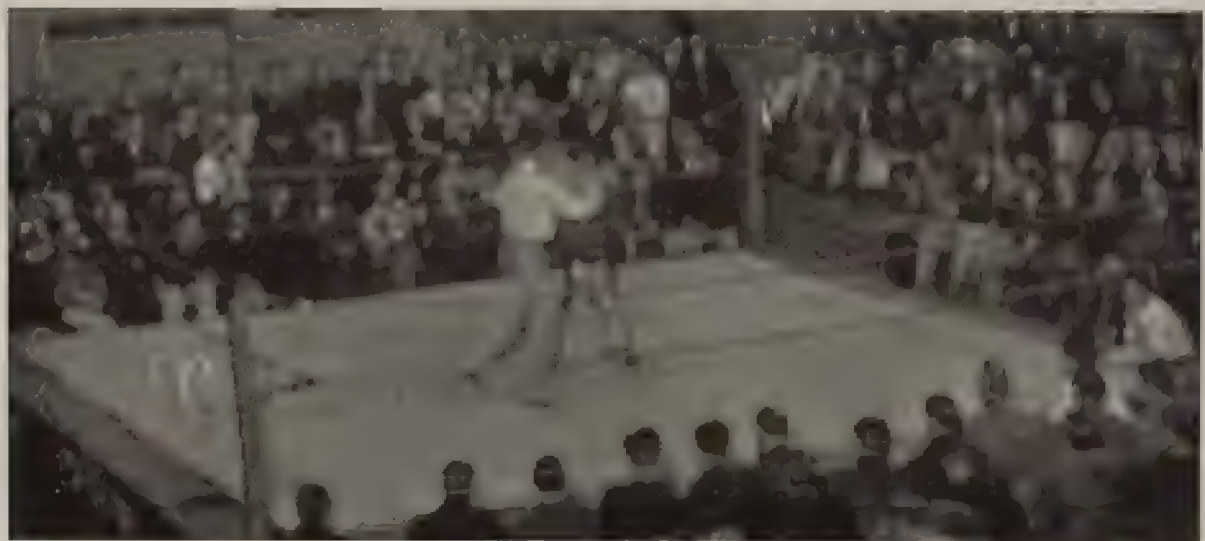
## Minor Sports

The third annual minor sports carnival held by the State University and State College was won by the Bobcats, 84-44. The boxing honors were divided, 12-12.

In the boxing events, Rex Henningsen severely punished Seonich to win the state middleweight championship. Dick Jones was awarded a technical knockout over Neil Sullivan for the welterweight title.

Clyde Banfield threw W. Greebe for the 145-pound championship, and Leonard Kuka took heavyweight honors.

Francis Malone, Scotty Stratton, Mitchell Sheridan, Fred Benson, Ted Cooney, Robert Myers and Nick Wren also made the trip to Bozeman.





First Row—Tambell, Bell, Harrison, King, M. Crowley.  
 Second Row—O'Neil, Barker, Doye, McCarthy, B. Cooney.

## Swimming Team

Bob Cooney was the only State University tank man to retain his title in the swimming meet with Montana State College at Bozeman.

Henry Fox, Montana State College aquatic star, set new records in the 40-yard free style and 100-yard free style to take individual honors in the meet, which was won by the Bozeman swimmers, 42-20.

R. Bell scored for the Grizzlies by taking third in the 100-yard breaststroke and third in the 100-yard free style. The medley relay also went to the State University men. O'Neil placed third in the 100-yard breaststroke and M. Crowley was second in the diving events.







T. Cooney      Johnson      Kuka      Myers      Benson      Brooks

## M-Club Winners

Sixteen campus championships were decided in the annual M club tournament held early in March. One crown slipped—Francis Malone handing his featherweight title to Noral Whittinghill. Whittinghill's heady fight won for him the cup awarded by the M men for the best boxing exhibition.

Chuck Goodspeed successfully defended his junior welterweight title. K. Carpenter stepped onto the heavy-weight throne, and Walfrid Fallman donned the middleweight crown. Bob Prendergast retained his bantamweight title by default and Rex Henningsen won the welterweight championship by a knockout. Sherman Miller retained his light heavy-weight title and Jimmy Brown out-generated Scotty Stratton to win in the lightweight division.



Goodspeed      Henningsen      Prendergast

In the wrestling bouts, Myers, Benson, T. Cooney, Swanson, Johnson, Kuka and Brooks acquired titles. Frank LeSage won the fencing bout.





Fitzstephens

Currie

Schulz

Lemire

Loftsgaarden

## Intramural Basketball

This year the interschool title was won by the Lawyers with four victories and one defeat. Second place was won by the Business Ad Bombers, with the Pharmacists in third place.

The lineup for the Lawyers included Loftsgaarden, Schulz, Lemire, Currie, Fitzstephens, Gilfeather and Boone. Watson and Williams were scoring aces for the Bombers.

In the intercompany race between companies in the State University R. O. T. C. unit, Company B won all of its contests to take the pennant. Teams were also entered by A and C companies.



Raff

Hartzell

Brown

Heller

Howe



Duff Crowley Coughlin Grafton Hartsell Lacklen Brown

## South Hall Basketball

Third West, with a record of five victories and no defeats, was an easy victor in the fourth annual South hall basketball tournament. Six teams, one representing the faculty, were entered in this year's competition which started early in the winter quarter. One team represented the first floor, while second and third floors were represented by two teams, one from each wing.

After starting out the season by receiving defeats from First Floor and Third West, the faculty team, headed by Carl Ross and Ted Rule, came back in its third game to defeat Third East, 73-13. The following evening the faculty slaughtered Second West, 84-6, and in the final game defeated Second East, 31-27, to tie with that team for second place in the final standings. First Floor followed in third place, with Third East just out of the cellar, which was held down by the much-defeated Second West team.

Jimmie Brown was manager of all west wing teams and Lincoln Bohlander managed those from the east wing. James Swango captained the First Floor team; Cale Crowley, Third West; Owen Barnes, Third East; Cal Emery, Second West, and Richard Jones, Second East.

Cale Crowley, Lewis Hartsell, Jimmie Brown, Gregg Coughlin, Elmer Link, Charles Stroup, Bob Lacklen, Kenneth Duff and Merrill Grafton were members of the victorious Third West team.

The participation of a faculty team in intramural basketball was a new event this year and its sensational rise from cellar position to second place caused no little interest in the tournament race. Besides Ross and Rule other members of the team were Kirk Badgley, Carl Blair, E. L. Freeman, Andrew Cogswell and Harry Adams.

# WOMEN'S ATHLETICS







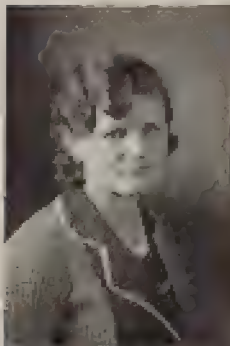
Margaret Randall    Mildred Renshaw    Una Randall    Olive Lewis    Ruth Jones

## Women's Athletic Association

### OFFICERS

Margaret Randall	President
Mildred Renshaw	Vice President
Una Randall	Secretary
Olive Lewis	Treasurer

The Women's Athletic association has been sponsor of all women's athletic activities and sports on the State University campus since the fall of 1922. The organization has as its aims, the interest of college women in athletic activities. Basketball, baseball, hockey, track and swimming are the major sports sponsored by the association, under managers appointed by the executive council. Volleyball, archery, tennis, golf and hiking are minor sports.



Margaret Randall

Copper-colored M's are given by the organization to all girls making nine first teams or to those who participate in eleven quarters of any of the sports sponsored by the organization.

On March 5, the first Intercollegiate Play Day was held, with representatives coming from Montana State College.



Mildred Renshaw, Laura Martin, Sara Miles, Ada Wood,  
Margaret Breen, Catherine Harrington, Una Randall, Margaret Randall

## Baseball—All-Star

Freshman women won the interclass baseball contest, Field Day of spring quarter 1931. Sophomores took second place, while the juniors and seniors did not compete.

Vera Anderson managed the baseball tournament which forms an important part of the annual Track and Field Day. Sara Miles had charge of the freshman team and Leola Stevens was manager of the sophomores.

A baseball tournament is held each spring quarter on Track and Field Day with women representing each class entered in competition.

The 1931 all-star team for baseball included Mary Castles, Celia Caffin, Estelle Fletcher, Edna Henriksen, Glory Morin, Mildred Renshaw, Mary V. Rose, Leola Stevens, Mary Sulgrove and Sara Miles.

## Basketball—All-Star

The senior team won the women's basketball tournament for the fourth consecutive time since this group entered the school four years ago as freshmen. In the final games held March 1, 1932, sophomores placed second and freshmen third.

Members of the senior team are Una Randall, captain; Margaret Randall, Bertha Cone, Margaret Seaton, Edith May Baldwin, Fae Logan, Elizabeth Perham, Mary V. Rose and Ruth Leib.

Leola Stevens managed the interclass tournament which is held every year. From the four teams competing, the all-star team was chosen. Those selected were Mildred Renshaw, Sara Miles, Margaret Randall, Una Randall, Ada Wood, Margaret Breen, Elizabeth Perham, Laura Martin and Catherine Harrington.



Laura Martin    Sara Miles    Mildred Benschaw    Margaret Randall  
 Mary Castles    Ada Wood    Una Randall  
 Juanita Armour    Mildred Dorsey

## Hockey—All-Star Team

Junior and senior co-eds won the championship of the interclass hockey tournament in a team composed of members of both classes. They clinched their place in the round robin tournament when they scored over the sophomores in the last game, November 4. The final standings of the teams were as follows: Junior-senior, first; sophomore, second; freshman, third.

Members of the all-star team, selected near the end of the quarter, were: Juanita Armour, Willie Clary, Mary Castles, Bertha Cone, Mildred Dorsey, Geraldine Ede, Margaret Leon, Eva Lesell, Olive Lewis, Laura Martin, Dorothy Miller, Margaret Randall, Una Randall, Leola Stevens and Ada Wood.

## Archery

Archery is a newly-inaugurated but popular minor sport among women on the Montana campus. State University of Montana women received fortieth place among sixty schools competing in a national intercollegiate telegraphic archery tournament in May of 1931.

The archery team was composed of those making the highest scores in the meet. It included: Emma Bravo, Maxine Davis, Jeanette Duncan, Grace Ludwig, Dorothy Miller, Icyle Rich, Lorraine Rowe and Ada Wood.





Martin, Mayo, Miles, Wells, F. Harrington  
Bailey, C. Harrington, Kotoslaw, Guyon, Doggett

## Swimming Team

Freshman women scored 34 points to the sophomores' 28 at the annual interclass swimming tournament held December 3, 1931. No junior or senior teams entered the meet. Sara Miles managed the contests.

The events for the tournament included a plunge for distance, a 20 yard crawl, 20 yard back stroke, 20-yard under water swim, 40 yard dash—free style, diving and side stroke for style.

Carol Wells was high point woman with 15 points earned by taking first in the 20 yard crawl, first in the side stroke for style and first in the 40 yard dash.

Sara Miles placed second with a score of 13 points. She earned first place in the back stroke, the underwater swim, and second in the 40 yard dash.

Grace Doggett received third place with ten points. These were won by taking first in the plunge for distance, second in the 20-yard crawl, and tying with Gladys Mayo for second place in the side stroke for form event.

Grace Doggett, Florence Harrington and Louise Geyer were members of the winning freshman team.

The all-star swimming team included Grace Doggett, Louise Geyer, Sara Miles and Carol Wells.

Five women were entered in the swimming events of Play Day held March 5 with representatives from Montana State College. They were Louise Geyer, Catherine Harrington, Laura Martin, Sara Miles and Carol Wells.



Mildred Boushaw, Marie Cliffe, Ada Wood, Catherine Harrington

## Track—All-Star

Sophomores placed first in the annual Track and Field day for all State University women, held during the spring quarter, 1931. Freshmen took second place and seniors were third. Track events included hurdles, individual and relay races while the field events were broad and high jumping, discus, javelin, basketball and baseball throws and shot put.

## Volleyball Team

An independent team won the intramural volleyball championship from nine other competing teams and captured the W. A. A. pennant offered in this sport. Faculty and Delta Gamma teams tied for second place in the tournament.



Ada Wood, Lucina Martin, Marie Cliffe, Margaret Randall, Una Randall, Marion Lewis

# ORGANIZATION



SYSTEM  
MORALE  
WISDOM  
INTUITION  
LEADERSHIP





Patten

Ullman

Pollinger

Breen

## A. W. S.

### OFFICERS

Ella Pollinger	President
Julia Patten	Vice President
Frances Ullman	Secretary
Mary Breen	Treasurer

Associated Women Students of the State University is an organization of all the women students in school. Organized in 1914 as the Women's league, later named the Women's Self Governing association, the present A. W. S. was formed in 1924. Its purpose is the legislation and enforcement of rules governing the women students.

A. W. S. sponsors a Co-ed Prom for all women in the fall quarter. This year the prom consisted of vaudeville skits given by the sorority groups and women of North and Corbin halls. Prizes were awarded Zeta Chi sorority and Corbin hall for their acts.

The Co-ed formal, a dance at which the women assume all responsibilities as hosts for the evening, is given during the winter quarter.

Other activities of the organization include a dinner for senior women, a spring picnic, a tea for visiting Interscholastic contestants and supervision of the May Fete.

Associated Women Students is governed by an executive board composed of the officers, chairmen of the standing committees, and representatives from each sorority, women's dormitories, Mortar Board, Tanan-of-Spur, Women's Athletic association and Central Board.



Standards: R. Couney, Warden, Lyman, Curtis, Logan.  
 Seated: Wood, Barnhill, Shallenberger, Elrod, Elrod, Mumm, Mooney.

# Central Board

## OFFICERS

Robert Hendon	President
Miriam Barnhill	Vice President
Marjorie Mumm	Secretary
Billy Burke	Business Manager

## MEMBERS

Robert Couney, Everett Logan	Senior Delegates
John Curtis, Horace Warden	Junior Delegates
Chalmer Lyman	Sophomore Delegate
Thomas Mooney	Kaimin Editor
Roy Wood	Yell King
Dr. M. J. Elrod, Dr. G. D. Shallenberger	Faculty Representatives
E. K. Badgley	Student Auditor

Central Board is the student governing body of the State University, consisting of all the officers of the Associated Students of the State University. These officials, with the exception of the Kaimin editor and the yell king are elected annually at the spring elections.

Central Board manages all activities which are under the jurisdiction of the associated students, as well as controlling the expenditures of all student funds. Weekly meetings of this board are held on Tuesdays.



Standing: Mattes, Shaw, Timboney, Fred, Bailson, Emerson, Warner.  
Seated: Randall, Macdonald, Bravo, Hop, Carr.

## Independent Council

Emma Bravo — — — — — Chairman  
Eleanor MacDonald Secretary

## Interchurch Group

Fellowship group: Orval Dreisbach, president; Margaret Groombridge, secretary. Interchurch group: Joy Browning, president; Margaret Madeen, secretary. Presbyterians: Archie Murchie, president; Bernice Oosterbeek, secretary. Wesley club: Margaret Lease, president; Mary Schoenhals, secretary.



Standing: Madeen, Dreisbach, Schoenhals.  
Seated: Browning, Oosterbeek, Groombridge, Lease.



# HONORARIES





Gillespie, Patten, Barnhill, Stroup, Hollinger, Blosser, McHugh, Deaton.

## Mortar Board

### OFFICERS

Patricia Regan	President
Julia Patten	Vice President
Jivelyn Blaaser	Secretary
Helen Fleming	Treasurer

Mortar Board is a senior women's national honorary organization. The highest honor that can be awarded to a woman student at the State University is to be selected to membership of this group.

Selection is made on the basis of scholarship, service and loyalty to the interests of the school. The purpose of the society is to train women for service and leadership. Those chosen for this honor are introduced to the student body and the visitors on the campus at the Singing on the Steps during Interscholastic week. Nine junior women were chosen last year to be members of this organization.



Patricia Regan

The Montana chapter of Mortar Board, Penetralia, is one of the oldest honoraries on the State University campus. It was founded here in 1904 and was granted a charter by the national organization in 1927.



Standing: Cooney, Murray, Lockwood, Sunderlin, Spaulding, Lewis.  
Seated: Barnes, Mooney, Gaughan, Stone, Miller, Brown, Mealy.

# Silent Sentinel

## OFFICERS

Charles Gaughan	President
Thomas Mooney	Secretary-Treasurer

Silent Sentinel is the local senior men's honorary organization. The purpose of the organization is to honor deserving men and to furnish them a means of better serving the State University.

In 1904, President O. J. Craig and Prof. Robert Sibly organized Silent Sentinel. The organization, whose purpose was the same as it is now, was kept secret until President Clyde Dunningway took charge. Due to his discouragement of secret clubs, the group was disbanded.

Silent Sentinel was revived in 1921 but the organization was not secret, as it had been formerly. Dean A. L. Stone of the School of Journalism taps the new members from the junior class at Interscholastic Track Meet S. O. S. Members are chosen on a basis of leadership and service.

Dean Stone and J. E. Miller, dean of men, are honorary members of Silent Sentinel. The group holds regular meetings at which ways and means of serving the State University are discussed, and later put into effect.



Charles Gaughan





Top Row: Hill, Smith, Loun, Fricker  
 Standing: Bell, Fox, Olson, Hawkes, Garton, Ho  
 Seated: Worls, Stratton, Sanders, Erickson, Tweto, Jones

## Bear Paw

*Sophomore Men's Honorary*

### OFFICERS

Claget Sanders	President
Scott Stratton	Right Paw
William Erickson	Left Paw

Work done during Interscholastic Track and Field Meet each May is the most important contribution of Bear Paw, sophomore men's honorary society.

During the Track Meet, members of the group meet each train, escorting contestants to their lodging places.

Outstanding service leadership and scholarship are the qualities necessary to make a student eligible for membership.

It is the aim of this organization to enforce the traditions of the campus, curtail walking on the grass and act as ushers at basketball and football games. The practice of members carrying paddles was abandoned this spring.

Members of Bear Paw wear white sweaters, trimmed in the school colors of copper, silver, gold, with the symbolic emblem of the organization on the front of the sweater.



Claget Sanders



Top Row: Hanford, Kendall, Miles, McElroy, Martin, Larson.  
 Standing: Busey, Brekke, Sullivan, Rigney, Armasse, Kellsner.  
 Seated: Cooney, Eastman, Schroeder, Greene, Stadler, Midgett, Jacobson.

## Tanan-of-Spur

*Sophomore Women's Honorary*

### OFFICERS

Lina Greene	President
Betty Kelleher	Vice President
Helen Schroeder	Secretary-Treasurer

Tanan-of-Spur, sophomore women's honorary, corresponds to Bear Paw, men's organization; only outstanding women of the sophomore class are selected to become members of this group. The organization assists in upholding the laws and traditions of the State University.

During Interscholastic Track Meet week, the organization performs its greatest duty, that of meeting trains and escorting guests to their lodging places. In doing this work, members of Spur co-operate with the Bear Paw members and take care of all the contestants who come for the meet.

During freshman week in the autumn quarter, the Spurs meet the trains and bring the women to the dormitories.

New members are tapped early in the autumn quarter at one of the school's football games.



Lina Greene



Top Row: Howes, Greenon, Cooney, Benschel, Dohring, Lawtonson, Woodfolk, Perkins  
 Standing: Benson, Frykman, White, Hoyt, Centerwall, Hodgson, Paul, Marsden, Plett, Whitaker, Stollings  
 Seated: Jensen, Poles, Neff, Chapin, Shields, Larson, Spaulding, Gintermann, Laws, O'Neil

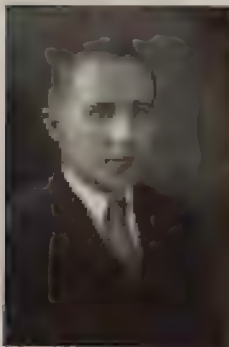
# Druids

*Local Forestry Honorary*

## OFFICERS

Stanford Larson	President
Al Spaulding	Vice President
John Shields	Secretary
Wilbur Chapin	Treasurer

The Druids, local honorary forestry fraternity, was organized on the Montana campus in 1923 for the purpose of providing a common meeting ground for upperclass men and faculty. Ralph Fields, then a student, and Prof. F. G. Clark founded the organization, wrote a code of ethics, a constitution and formulated a ritual. Members of the group are selected for their scholarship and outstanding work in the School of Forestry.



Stanford Larson

Meetings are held semi-monthly with students in fraternities or private homes acting as hosts. After business meetings, topics of interest to members of the profession are discussed.

Initiations are held each autumn and spring quarter far back in Pattee canyon at the "sacred grounds of the Druids". Here new members are admitted, pledged to perpetuate the profession of forestry and to tighten the bonds within the group.





Standing: Kennedy, Gardner, Long, Brown, Boyington, Angus.  
 Seated: Taylor, Hornhill, Blosser, Hemgren, McGrade, Melton.

# Montana Masquers

*Local Dramatic Group*

## OFFICERS

Clifton Hemgren	President
William A. Brown	Vice President
Jeanette McGrade	Secretary-Treasurer

"Devil's Disciple," "Death Takes a Holiday" and "The Far-Off Hills" were the three major productions staged by the Montana Masquers during the school year. "Death Takes a Holiday" was produced in co-operation with the State University alumni, in a down town theater.

In addition to these major productions, "The Hairy Ape," an eight-scene play, was produced at the beginning of the spring quarter. Several one-act plays were presented each quarter also.

This year the Montana Masquers re-organized the group, changing the requirements for membership. A point-system was established and each member now must gain 30 points for his work in the various productions. In addition to this, the University Players were organized as a subsidiary of the Masquers. To become a member of this group 15 points must be earned.



Clifton Hemgren



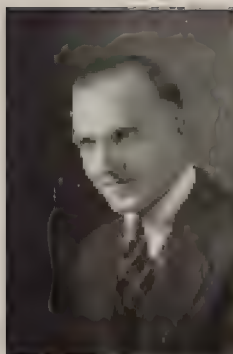
Standing: Colkins, Larson, Shields, Dorend, Fisher.  
Seated: Amos U. Denny, Carstens, Young, Denney.

# Phi Sigma

*National Biological Fraternity*

## OFFICERS

Martin Carstens	President
Gregory Short	Vice President
Mary Agnes Young	Secretary
Amos Denney	Treasurer



Martin Carstens

Lambda chapter of Phi Sigma was established on the Montana campus in 1919. Phi Sigma is a national honorary biological fraternity. Candidates for membership must have a "B" average in their biological work and more than a "C" average in their other university work. The purpose of the club is to furnish a means of scientific research and study. The group meets on the first Tuesday of each month.

This year, for the first time, Phi Sigma sponsored public and semi-public meetings to which people interested in science were invited. For these meetings, both lecturers and films were obtained.



Top Row: Gilbert, Schneider, Scott, Kennedy, Sheridan, Cooney.  
 Standing: Kirtou, Nutter, Curtis, Steiner, Covington.  
 Seated: Astle, Hardy, Stone, Cragwell, Mooney, Alquist

# Sigma Delta Chi

*Men's Professional Journalism Fraternity*

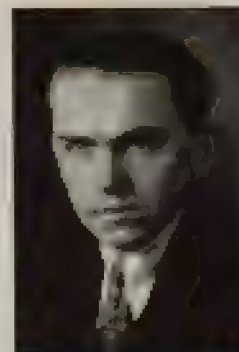
## OFFICERS

- |                   |           |                     |
|-------------------|-----------|---------------------|
| Thomas E. Mooney  | - - - - - | President           |
| Edwin P. Astle    | - - - - - | Vice President      |
| Gerald G. Alquist | - - - - - | Secretary-Treasurer |

Sigma Delta Chi, men's international professional journalism fraternity, is the oldest professional fraternity on the campus. It was granted a charter by the national chapter in 1915.

Sigma Delta Chi requires a scholarship average which is above the average of the School of Journalism. To become a pledge of this group, students must signify their intentions of following journalistic work after graduation, they must show ability in some field of journalism and be majors in the school.

During the past year, members co-operated with Theta Sigma Phi members in sending out weekly news from the State University to about eighty weekly newspapers of the state. Sigma Delta Chi also gives a cup to the winner of Class C newspapers in the annual High School Editorial contest.



Thomas Mooney





Standing: Ramsville, Poot, Wilson, Francis, McLamores.  
Seated: Vardanis, McCaig, Abbott, Kennedy, Regan, Stewart.

# Theta Sigma Phi

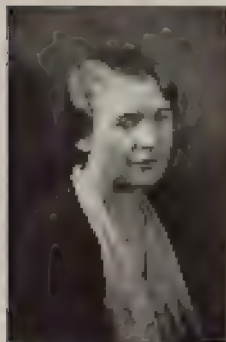
*Women's National Journalism Fraternity*

## OFFICERS

Freda McCaig	- . . . . .	President
Irene Vahnais	- . . . . .	Vice President
Patricia Regan	- . . . . .	Secretary
Idella Kennedy	- . . . . .	Treasurer

High scholarship rating in journalism and outstanding work in the school are necessary for those becoming members of Theta Sigma Phi, women's national honorary professional fraternity, which was chartered on the Montana campus in 1916.

One of the outstanding events of the campus, sponsored by this group this year, was the annual Matrix Honor table. Prominent women students were guests of Theta Sigma Phi at this banquet. Hannah Mitchell Danskin of Spokane newspaper and club woman, was the principal speaker.



Freda McCaig

The "30" Service is another activity of Theta Sigma Phi. It furnishes source material for papers on Montana history or other topics, to women's clubs and high school teachers.

Other activities of the organization include a portion of the Interscholastic publicity and the publishing of "Campus Rakings" on Aber Day.



# Alpha Kappa Psi

*Men's National Commercial Honorary Fraternity*

## OFFICERS

Herbert Verheek	President
Oscar Limpus	Vice President
Oliver Kinonen	Secretary
Rex St. John	Treasurer

# Kappa Psi

*Men's National Pharmaceutical Fraternity*

## OFFICERS

Harold Voight	President
Wallis Duncan	Vice President
John Romersa	Secretary
Leon Richards	Treasurer





# Phi Lambda

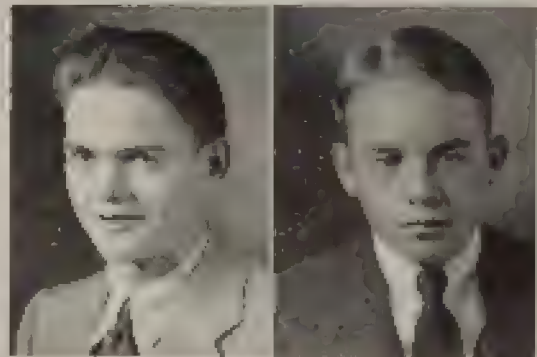
*Local Chemistry Fraternity*

## OFFICERS

Robert Brown	President
Alexander McBride	Vice President
Joe O. Lasby	Secretary
Helmer Hansen	Treasurer



Roy Wood



Philip Pollard

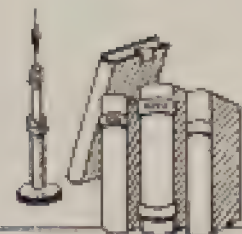
Scott Stratton

# Yell Kings

Roy Wood was appointed Yell King to succeed Billy Burke who gave up the office. Philip Pollard and Scott Stratton were selected as assistants. The Yell King takes charge of school rallies and is instrumental in fostering and maintaining school spirit. He and his staff organize and lead the cheering sections at all athletic contests.



# CLUBS



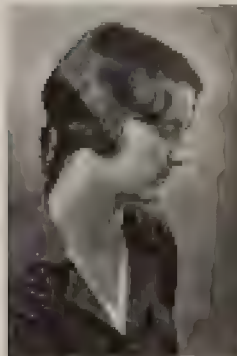


## Corbin Hall Club

### OFFICERS

Thelma Bjerneby	- - - - -	President
Clara Mabel Foot	- - - - -	Vice President
Mary Castles	- - - - -	Secretary
Esther Epstein	- - - - -	Treasurer

All women students who reside in Corbin hall are members of the club. Officers are elected each fall to govern the club for the year. Besides the regular officers, the group elects one member to be a representative to the executive board of the Associated Women Students, the governing body of the women students of the State University. Mrs. Frank Turner has been the social director of Corbin hall since it was opened in January, 1927.



Thelma Bjerneby

The social activities of the group include several dances and firesides. Corbin hall is the newest dormitory on the campus. It was first opened to freshman women only, but next year will become a hall for upperclass women. The hall was named in honor of Frances Corbin, formerly a member of the Department of English at the State University.



## North Hall Club

### OFFICERS

Carol Wells	President
Esther Strauss	Vice President
Evelyn Juel	Secretary
Donna Hoover	Treasurer

North hall was opened for occupancy in September, 1924, when members of the class of 1927 became its first residents. Mrs. Theodore Brantly has been director of the hall since 1927.

North hall was intended primarily as a freshman dormitory. Beginning next year this dormitory will become once more a home for freshman women only, with the exception of a few upperclass women who are chosen as leaders. It will be the policy of the administrators to arrange rooms in the best possible way for the promotion of a wide range of acquaintances among the residents.

Several social functions are held during the year. During the winter quarter, North hall acts as host at several Sunday-afternoon teas, given for the occupants of the dormitories, fraternities and sororities.



Carol Wells





## South Hall Club

### OFFICERS

Fred Moulton	President
Lincoln Bohlander	Vice President, East Wing
James G. Brown	Vice President, West Wing
Cregg Coughlin	Secretary
Kenneth Duff	Treasurer

South hall, the men's dormitory on the campus, was opened officially in 1923. The South Hall club is composed of the residents of the hall, and officers are elected each fall for the ensuing year.



Fred Moulton

South hall is under the management of students, and is one of the few university dormitories in the United States so governed. Proctors are selected from the upperclass men in the hall and the State University selects a manager, assistant manager and medical proctor from among the older students in the school. Jack O'Brien was manager of South hall this year.

The members of the South Hall club give a formal dance in the fall quarter and two novelty dances, a "gangster" and a sport dance, in the winter and spring quarters. A banquet is given for the outgoing freshmen each spring.



Top Row. Walton, Sears, Bernhard, Kramer, Phillips, Brooks.  
Standing: Guntentamm, Matsen, Bauer, Beechel, Hague, Holgren, Shields, Landall  
Seated: Ryanson, Fobes, Hawes, McCarty, Captain Rogers, Stillings, Wagner.

# Forestry Rifle Club

## OFFICERS

- |                |                     |
|----------------|---------------------|
| Marion McCarty | President           |
| Evans Hawes    | Secretary-Treasurer |
| Robert Matsen  | Coach               |

Activities of the Forestry Rifle club this year began late in the fall quarter when 28 members reported. Practice was conducted at the Forest Service rifle range in the Chamber of Commerce building. Captain Fred Rogers, associate professor of military science, undertook the training of new members of the club on Tuesday evenings. The experienced riflemen practiced on Friday nights.

A shooting match was held in the winter quarter between teams of 10 men selected from the Forestry Rifle club and the United States Forest Service men. The Forestry Rifle club was defeated by 35 points.

Lincoln Landall was the high-point man of the meet. Other high scorers were Eugene Fobes, Robert Matsen, Evans Hawes and John Shields. Other men competing were Marion McCarty, Forrest Bauer, Edwin Rauma, Kenneth Beechel and Lloyd Hague.



Marion McCarty



## Forestry Club

### OFFICERS

John Shields  
President

Eugene Fobes  
Vice President

Walter Pool  
Secretary

Robert Holgren  
Treasurer

Membership in the Forestry club has grown from about twenty in 1914, when it was first organized, to more than one hundred. The object of the organization is to further forestry at the State University and to provide a professional and social meeting ground for forestry students.

One of the outstanding activities of the club during the year is its annual Foresters' Ball. The men's gymnasium is appropriately decorated and everyone attending is expected to appear in costume suitable to the Old West.







# Press Club

## OFFICERS

Edwin P. Astle	Richard Schneider	Margaret Raitt	Clara Mabel Foot
President	Vice President	Secretary	Treasurer

Membership in the Press club is open to all students taking journalism. The club was established to form a common meeting ground for students in journalism, to further their major work in the State University and to provide discussion on journalistic questions.

"The Shack Splinter" was established this year. This is a small four-page paper published at each meeting of the club. Activities of the club include the annual Press Club banquet, Dean Stone Night and a field trip.





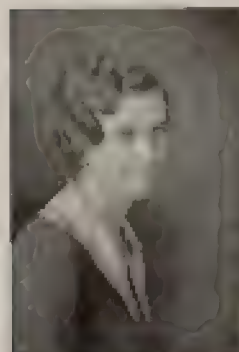
Standing: E. Fredrickson, Morin, Schell, K. Smith, Dowdle, Williams, H. Larson, K. Poney, Stevenson, Murphy.  
 Seated: H. Larson, Tupper, Coates, Seewald, Manis, Gleason, K. Dollinger, Dobner, Knes.

## Home Economics Club

### OFFICERS

Elizabeth Manis	President
Glory Morin	Vice President
Rose Seewald	Secretary-Treasurer

In 1919 the Home Economics club was organized to encourage greater professional interest in home economics and related subjects. All students majoring or minoring in the department are eligible for membership. Meetings of the organization are held monthly during the school year. Helen Gleason, head of the Department of Home Economics, sponsors the club.



Elizabeth Manis

Members of the club assist in giving several teas during the year and they manage the lunch which is served to the Aber Day workers.

Fall quarter the club made and packed boxes of candy which were given to the occupants of the Missoula County Poor Farm as Christmas gifts. Members also made a patch-work quilt for the proposed Home Economics practice house. Several joint social meetings with the Forestry club were held this year.



Top Row: Cox, Brown, Laidwood, Peterson, Lyman, Kuhn, Dahlberg, Covington.  
 Second Row: Lonsore, Murray, White, McKay.  
 Third Row: Dailey, Vairo, Blackson, Cline, Reynolds, Stinson, Watson.  
 Front Row: Crowley, Fitzgerald, Meeker, McCarthy, Williams, Andrews, Burns, Logan.

## M Club

### OFFICERS

Frank McCarthy  
 Lowell Dailey

President  
 Secretary

Every man who has earned his letter on a major State University athletic team is entitled to membership in the men's M club. Each member signs his name and the sport in which he participated in a large book, which is the permanent property of the club.

The most important activity sponsored by the M club is the annual M club tournament. Boxing, wrestling, foil and saber contests are included in this tournament. The winners of the preliminary events compete for the championship titles at the M club tourney. The final tournament this year was held on March 3.

The M club also plays an important part in arousing high school athletes' interest in the State University. An M club scholarship is usually given to some prominent high school athlete who could not afford to attend the State University without financial aid.



Frank McCarthy





A. Deschamps, M. Murphy, Father O'Brien, H. Hubert, R. Cooney

## Newman Club

### OFFICERS

Robert F. Cooney	- - - - -	President
Arthur Deschamps	- - - - -	Vice President
Helen Hubert	- - - - -	Secretary
Margaret Murphy	- - - - -	Treasurer

Sixteen years ago the local chapter of the Newman club, organization of Catholic students at the State University, was organized on the Montana campus. At present the club has a membership of nearly two hundred.

Meetings are held during the year on the second Sunday of each month. The members attend mass and, following the service, a breakfast is served in the basement of St. Anthony's church.



Robert Cooney

Winter quarter of this year, the men of the club gave a smoker with a program of boxing and wrestling matches. Spring quarter, an informal dance was given by the Newman club.

Professor Brassil Fitzgerald acts as faculty adviser to the club. The local organization has been a member of the Rocky Mountain Federation of Newman Clubs since 1929.



Top Row: Kroyek, Doni, Santos, W. Duncan, R. Dussault, Vance, P. Bateman, A. Jacobsen, Chairman  
 Second Row: Griffin, Woodrow, Donald, Blen, Conly, Voight, Stewart, Kasper, S. Johnston, A. LaCasse, O. LaCasse  
 Third Row: Bonarson, I. Fredrickson, M. Davis, Plasted, Stuby, Jamison, Hoff, Cariso, Joraso  
 Bottom Row: Frost, Spokker, H. Hamilton, Kushar, Cookish, Noid, Hart.

# Pharmacy Club

## OFFICERS

Edward Plasted	President
Maxine Davis	Vice President
Alice Doull	Secretary-Treasurer

Professional and social interests are combined in the Pharmacy club, an organization made up of all students registered in the School of Pharmacy. The club is an auxiliary of the Montana State Pharmaceutical association.

A mixer, given each fall to introduce members of the club, has entertainment in keeping with the profession. Trips are taken to the beet sugar factory near Missoula each fall, and to the government research laboratory for the prevention of spotted fever, at Hamilton, each spring. One meeting of the spring quarter is a picnic.

The second annual Dean Mollett banquet was held this year, honoring Dean C. E. Mollett who has taught pharmacy students for 24 years. Dean Mollett was unable to attend this year, as he was in Gainesville, Florida, on a leave of absence.



Edward Plasted



Standing: Clark, Boyd, Griffith.  
 Second Row: Ganson, Haddock, Schenckels, Mills, Sauer, Trachna, Gossweiler, Parkinson, Boffer.  
 Seated: Knecht, Oosterboek, Groombridge, Taylor, Sughrue, Hancock, Matthews, Chiril.

## Spanish Club

### OFFICERS

Clifford Walker	- - - - -	President
Hazel Borders	- - - - -	Vice President
Alice Taylor	- - - - -	Secretary-Treasurer

Organized by Prof. B. E. Thomas in 1923, the Spanish club has grown increasingly active each year. Cecile Virginia Sughrue has directed the activities of the group this year in the absence of Professor Thomas. The club meets the second and fourth Wednesdays of each month, at various fraternity houses.



Clifford Walker

A Spanish banquet was given on October 12, to celebrate "El Dia de la Raza" ("The Day of the Race"), a Spanish holiday. One hundred Spanish students and faculty members attended. Toasts were given in Spanish.

On December 9, the group gave a "Pianta," a Spanish Christmas festival. Spanish folk songs and dances were given. Ninety students were present at this celebration. A Spanish three-act play was presented on March 10, in co-operation with the Masquers.



# FRATERNITIES





Standing - Hagerty, Deeney, Matthews, Simmons, Verbeek, Hendon, Scott, Davidson, Bovington, Harrington  
 Seated - Wold, Kennedy, White, Lofsgaarden, Dean, Hannant, Hosty, Gaughan.

## Interfraternity Council

### OFFICERS

Charles Gaughan - - - - - President  
 Harold Dean - - - - - Vice President  
 Hubert Simmons - - - - - Secretary-Treasurer



Charles Gaughan

Alpha Tau Omega - - George Bovington, Oliver Wold  
 Delta Sigma Lambda - David Hannant, Hubert Simmons  
 Kappa Sigma - - - Roy Davidson, Thomas Hosty  
 Phi Delta Theta - - William Deeney, Robert White  
 Phi Sigma Kappa - - Lynott Horan, Robert Hendon  
 Sigma Alpha Epsilon - - Harold Dean, Wesley Scott  
 Sigma Chi - - - William Hagerty, James Harrington  
 Sigma Nu - - - Owen Lofsgaarden, Herbert Verbeek  
 Sigma Phi Epsilon - Charles Gaughan, Berton Matthews

Founded at Virginia Military  
 Institute  
 Richmond, Virginia  
 September 11, 1865  
 DELTA XI CHAPTER  
 Established 1923



94 Chapters

## Alpha Tau Omega



Baker, Blackshear, Brown, M. Carnine, R. Carnine,  
 Carroll, Caster, Eberkin, Emery, Frazier, Gallagher, Harris, House-  
 Kirtan, Lanzendorfer, Larson, LeBans, Lyman, Mills, Nutter, Oech,  
 Riley, Roberts, Robertson, Root, Saylor, Schneider, Sweeney, Stout,  
 Wade, Walkley, Watson, Wertz, Wilson, Woodrow, Wild





Founded at University of  
California  
Berkeley, California  
September 9, 1921  
THETA CHAPTER  
Established 1927

12 Chapters

## Delta Sigma Lambda



Aldrich, Almich, Bateman, Beaman, Charles, Christensen, Clark, Coleman,  
Condy, Dahl, Emley, Duncan, Fullman, Powell, Prosser, Gomayitz,  
Hannatt, Hansen, Heller, Hoffman, Korns, Logan, Marcy, McCormick,  
Moorlake, Ogden, Overland, Seger, Shadson, Shields, D. Simmons, H. Simmons,  
Semerville, Steensland, K. Thomas, S. Thomas, Vance, Walker, West, Veseth

Founded at University of Virginia  
 University City, Virginia  
 December 10, 1869

DELTA OMICRON CHAPTER  
 Established 1927

108 Chapters



## Kappa Sigma



Belanga, Docket, Blankenship, Brown, Channon, Christensen, Davidson, Linn  
 Frazier, Hinson, Rusty, Johannes, Lewon, C. Little, B. Little, J. Little  
 F. Long, G. Long, Moss, Odgers, Olson, Price, Pritchard, Romanus  
 Silfost, Smith, Stansberry, Stephens, Sterling, Story, Trachita, Vead



Founded at Miami University  
 Oxford, Ohio  
 December 26, 1848  
 MONTANA ALPHA CHAPTER  
 Established 1920



101 Chapters

## Phi Delta Theta



Agather, Baldwin, Barnes, Bollender, J. Brown, W. Brown, Burg, E. Burke,  
 Bussey, Clepton, Cooney, Curtis, Deansy, Dahlberg, Deibel, Drayton, Everts,  
 W. Erickson, Farnsworth, Flynn, Fox, Grosse, Huestetter, Holstrom, Hawkins, Jeffrey,  
 Leckler, Lundberg, Lockwood, Manns, Mearry, Moulton, O'Rourke, Partridge, Patterson,  
 Peterson, Ballard, Reynolds, Rhoads, Robbitt, Rutherford, Sayatovich, Smith, Sosnka,  
 Sostalis, Staley, Sullivan, Thompson, Vander, Watson, White, Wilschul, Wilkins



Founded at Massachusetts  
Agricultural College  
Amherst, Massachusetts  
March 15, 1873

MU DEUTERON CHAPTER  
Established 1923



54 Chapters

## Phi Sigma Kappa



Allen, Arnold, Bell, Cameron, Carpenter, Chisholm, Conard,  
Cronkleton, Cuniff, Davis, Elliott, Ellsworth, Parkman, Gilman, Gustafson,  
Gustafson, Hancock, Hayes, Hendon, Hewson, Hobbrough, Hopwood, H. Jones,  
H. Jones, M. Kennedy, R. Kennedy, Laska, Marstad, Martin, Mellinger, Peterson,  
Pinkney, Quindin, Ramer, Robinson, H. Snyder, S. Snyder, A. Spaulding, K. Spaulding,  
Stapp, Stratton, Swanson, Tesendorfer, Williams, Wood, Woodward, Zadra.



Founded at University of  
Alabama  
Tuscaloosa, Alabama  
1856

MONTANA BETA CHAPTER  
Established 1927

106 Chapters

## Sigma Alpha Epsilon



Benton, Bernhardt, Black, Blawie, Brown, R. Cooney, T. Cooney, Carliss, Dean,  
E. Deschamps, A. Deschamps, Dodge, Fosterly, Fitzpatrick, Flint, M. Gates, W. Gates,  
Gatchell, Handerson,  
Harrison, Hawke, Hazelbaker, Hemmingson, G. Hovon, V. Hovon, Hoye, Huppe, Janssen,  
C. Johnson,  
R. Johnson, Lambert, Larson, Lasky, Lewellyn, E. Mattson, H. Mattson, O'Neil, Olson, Paddock,  
Peterson, Place, Raff, Robertson, Rudolph, Schnell, Scott, Sell, Spafford, Stearns,  
Sunderlin, Tangle, Walte, Wentworth, Wood, E. Vassar, E. Vassar, Vickerman



Founded at Miami University  
Oxford, Ohio  
June 28, 1855

BETA DELTA CHAPTER  
Established 1906

91 Chapters



## Sigma Chi



Abquist, Andrews, Atkins, Barnhill, Blair, Borg, Burns, Clapp, Conchlin,  
Cunningham, Dixon, Duff, Fossault, Goodwin, Gough, Grafton, G. Plouffe, F. Plouffe,  
Flashed, Frost, Hagerly, Harrington, Harvill, Hazelton, Heimback, Hendron, Hoblitt,  
Holmes, Huffman, Jacobs, Jones, Lowrey, McCarthy, Metcalf, J. Murphy, M. Murphy,  
O'Brien, Post, Rochester, T. Ross, Roskie, Rossiter, Schell, Simons, Spear,  
Spottswood, Tibbs, J. Tobin, Tyrus, Youden, Van Vorst, Whittinghill, Wilson, Zedler





Founded at Virginia Military  
Institute  
Lexington, Virginia  
January 1, 1869  
GAMMA PHI CHAPTER  
Established 1905

96 Chapters

## Sigma Nu



Allen, Arnold, Blaskovich, Brown, Byrne, Clarke, Chakras, Cowperthwaite,  
Cromo, Culver, Donlan, Dussault, Dwyer, Gilham, Griffith, Gullickson, Haugen,  
Hobart, Hill, Hunt, Karstedt, Kolby, Kutz, Kuhlmann, Kishes, LaGrone,  
Lund, Lee Sage, Ledersand, Mangham, McCarty, Miller, Morrison, Noyd, Paterson,  
Rand, Rice, Rebel, Rogers, Rovik, Shaver, E. Sheridan, M. Sheridan, Silva,  
Smalley, Smith, Spokken, St. John, Tangen, Traylor, Verhoek, Wickware



Founded at Richmond College  
Richmond, Virginia  
1901

MONTANA ALPHA CHAPTER  
Established 1918

67 Chapters

## Sigma Phi Epsilon



Ash, Beardsley, Centerwall, Connelley, Cornell, Cram, Dullin,  
Erickson, Flint, Gluehan, Good, Grossinger, Holmberg, Holverson, Lantz,  
Lofgren, Lempus, Lloyd, Malm, Marvey, Plantico, Sanders, Schroeder,  
Seibner, Skoog, Spaulding, Stein, Strand, Turley, Tweto, Wilkinson





# SORORITIES





Standing - E. Kaatz, Sweetman, Stussy, Davis, Lehou, Dyer, Stephenson, Huffman, Ullman, Patten  
 Seated - Strand, Martin, Jones, Dunn, Hegland, Adami, Barnhill, Cougill, Larson

## Pan-Hellenic Council

### OFFICERS

Mary Hegland	President
Julia Patten	Vice President
Miriam Barnhill	Secretary
Jane Adami	Treasurer



Hegland

Alpha Chi Omega	Marion Davis, Frances Ullman
Alpha Phi	Maude Evelyn Lehou, Loisjane Stephenson
Alpha Xi Delta	Kathleen Dunn, Mary Hegland
Delta Delta Delta	Elza Huffman, Julia Patten
Delta Gamma	Elizabeth Farmer, Selvia Sweetman
Kappa Alpha Theta	Eleanore Dyer, Margaret McKay
Kappa Delta	Hazel Borders, Mary Martin
Kappa Kappa Gamma	Jane Adami, Miriam Barnhill
Sigma Kappa	Rhoda Cougill, Hazel Larson
Zeta Chi	Eleanor Kaatz, Elizabeth Strand

Founded at DePauw University  
Greencastle, Indiana  
October 15, 1885

ALPHA XI CHAPTER  
Established 1923

58 Chapters



## Alpha Chi Omega



Armstrong, Bell, Birkko, Fahn, Connolly, Craig  
Davis, Deanna, Emerson, Fletcher, Gaskins, Garrison, Griffin  
Hartwell, Head, Howatson, Hunt, Jefferson, Landa, Lander  
Miles, Murphy, Norton, Powers, Provost, Rigney, Sherman  
Spitzer, Sulgove, Ullman, Watkins, Wendke, Wilkins





Founded at Syracuse University  
Syracuse, New York  
1872

CHI CHAPTER  
Established 1918

36 Chapters

## Alpha Phi



Arnold, Bailey, Brown, Cunningham, de Mers, Evans, H. Gillespie,  
R. Gillespie, Hamlin, Harrigan, Kitchard, Kindsley, Larsen, Lathson, Lopez,  
Lowe, Means, Mason, McElroy, Morris, Nurbur, Pender, R. Dollinger,  
H. Dollinger, Pitzer, Rott, Rouben, Rude, Sanders, Sauer, Schneider,  
Smith, Spafford, Stephenson, Swartz, Tait, Taites, Tucker

Founded at Lombard College  
Galesburg, Illinois  
April 17, 1893

ALPHA NU CHAPTER  
Established 1924

54 Chapters



## Alpha Xi Delta



Andersen, Arnsen, E. Barber, C. Barber,  
T. Bjornely, V. Bjornely, Duck, Dunn, Geyer, Hansen,  
Hart, Heglund, Horton, Johnson, Matthews, Mordley,  
Shields, V. J. Smith, V. L. Smith, Stock, Wendt.





Founded at Boston University  
 Boston Massachusetts  
 November, 1888

THETA RHO CHAPTER  
 Established 1926

85 Chapters

## Delta Delta Delta



Benson, Barnes, Boles, Card, Davis, Evans  
 E. Ford, G. Ford, Harford, Huffman, H. Kelleher, Kinn  
 Larson, Loren, Olinier, Patton, Rogers, C. Smith  
 P. Smith, G. Smith, J. Smith, Strauss, Thomas, Wynn



Founded at University of  
Mississippi  
Oxford, Mississippi  
1874

PI CHAPTER  
Established 1911

46 Chapters



## Delta Gamma



Bartman, Bodine, Brady, Brockhaus, Cooney, Crawford  
Dixon, Duval, E. Farmer, W. Farmer, Fitzpatrick, Galusha, Harden, Jennings  
R. Kati, M. Kati, Lemus, McQueen, O'Leary, Rhoads, Ritchey, Sarnau  
Staller, Stussy, Sweetman, A. Wilcox, M. Wilcox, V. Wilcox, Watland



Founded at DePauw University  
Greencastle, Indiana  
January 27, 1870  
ALPHA NU CHAPTER  
Established 1909

60 Chapters

## Kappa Alpha Theta



Ballard, M. C. Brown, M. E. Brown, Buss, Cooney, Dyer,  
Dyer, Harries, Harper, Harrington, Johnson, Kelly, Lammson,  
Loren, McGuire, McKay, Matthews, Merlowe, Murphy, Patterson,  
Rabston, Regatt, Steinhausen, Silverman, Skulasos, Smith, Wallace



Founded at Virginia State  
Normal College  
Farmville, Virginia  
October 23, 1897

SIGMA CHI CHAPTER  
Established 1924

71 Chapters



## Kappa Delta



Wasson, Borders, Clarke, Chapman, Eldering, Eason, Eno,  
Erickson, Fletcher, Gray, Hahn, Jacobson, F. Jones, R. Jones, Knight,  
Kitt, McDonald, McKelvie, Martin, Midgett, Mills, Moore, Piquette,  
Roberts, Schweiger, Stevens, Storey, Tressman, Wolfe, Woodcock





Founded at Monmouth College  
 Monmouth, Illinois  
 October 14, 1870

BETA PHI CHAPTER  
 Established 1909

68 Chapters

## Kappa Kappa Gamma



Adams, Baldwin, Balford, Barnhill, Bartsch, Bell, Borg, Brown,  
 Casella, Fox, Fitzgerald, Grayson, Harriott, Henderson, Hobbins, Hoover,  
 Hursky, Johnson, Jack, Jundt, McDaniel, Nesson, Nofsinger, Perry,  
 Pillsbury, Piontzer, Rounless, Stewart, St. Surs, A. Taylor, O. Taylor, Walker

Founded at Colby College  
Waterville, Maine  
1874

ALPHA NU CHAPTER  
Established 1924

48 Chapters



## Sigma Kappa



Avery, Brownrigg, Byrne, Christopherson, Coe, Cosner, Coughlin, Danks,  
Hoban, Hornum, Hunt, Johnson, Kelleher, Kelley, Kemp, Kingsbury,  
G. Larson, H. Larson, McKittrick, McLoughlin, Melanore, McLennan, McMillan, Malone,  
Munn, Rand, Swann, Spenser, Stephenson, Stillings, Stone, Wik





Founded at the State University  
of Montana  
Missoula, Montana  
May 27, 1926

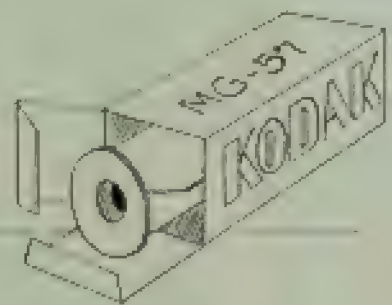
## Zeta Chi

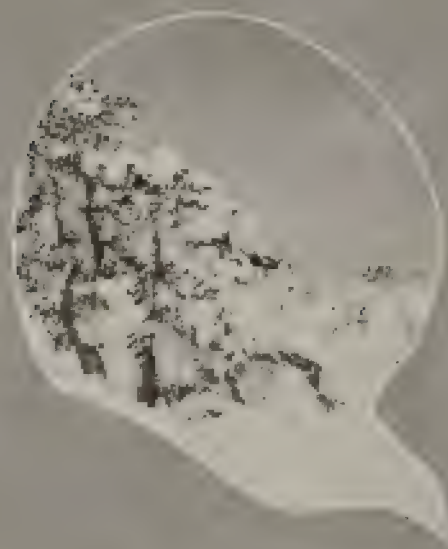


Dalgaard, Gontling, Bowman,  
Hoydorf, Hubert, Jesinger, E. Kuntz, O. Kuntz, Kerin,  
Kniffen, Laney, Lewis, Love, Petrin, Rogness,  
Shaw, Smith, Strand, Sullivan, Trussel



SCENIC





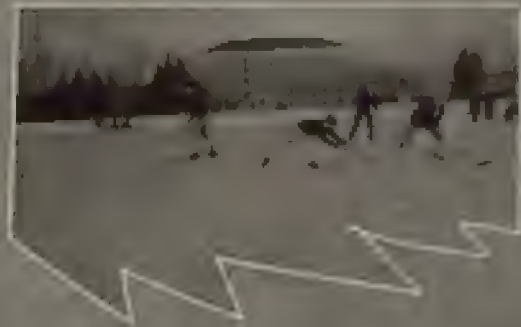
Scenes taken from the summits of Rattlesnake range, the source of Missouri's water supply  
Photographs secured through the courtesy of Walter Custer.





Even winter can not conceal the natural beauty of the Montana swamps.

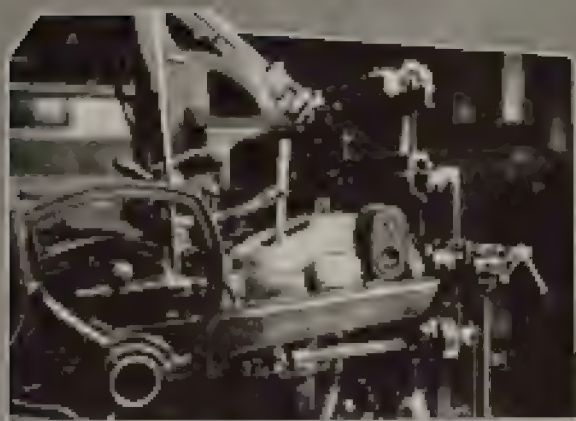
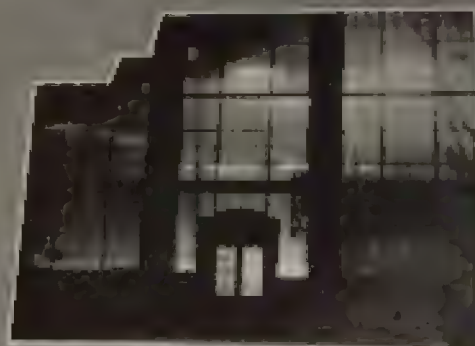




Main hall on a frosty morning. Hockey on the Foresters' skating rink. A partial view of the city from the face of the old clock. (Note clock hands at right of picture.) The practice house. Where the gang congregates between classes.

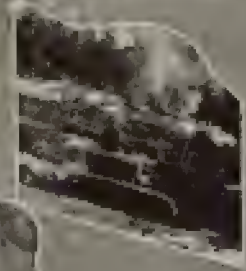






Off to Battle for the annual Grizzly Bobcat game. The building with a thousand eyes. The Linotypes in the Shack. Pearly lights winked at us through the black night. Resurfacing the parade grounds. The press.

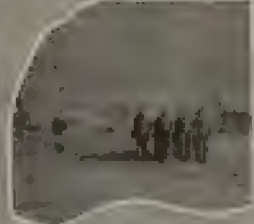




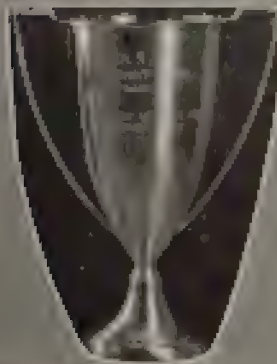
**PIANO  
CONCERT**  
SUN. 4  
MAIN HALL



**M CLUB TOURNAMENT**  
Thursday, March 4, 1932  
**MEN'S GYMNASIUM**  
of the University of Montana



Residential district in Missoula. To those who fought for the nation. A "Cat" in the woods. The Natural Science building. Christmas on the campus. The heating plant. Squads right. Brookies! Babe all dolled up for the ball. It was built in 1922 but it has had more dates than that. The Masquers' playhouse. Looking south on John Avenue.



Varsity Football. Delta Gamma, Phi Sigma Kappa, Rho Dantuit Rho, Manager Jack Toole, Kappa Sigma and Delta Delta Delta.





North and Corbin for women. Callaghan. Natural Science portal. E. S. C. students pay tribute to Montana gridders. His teeth are chattering. Midwinter. Front page.



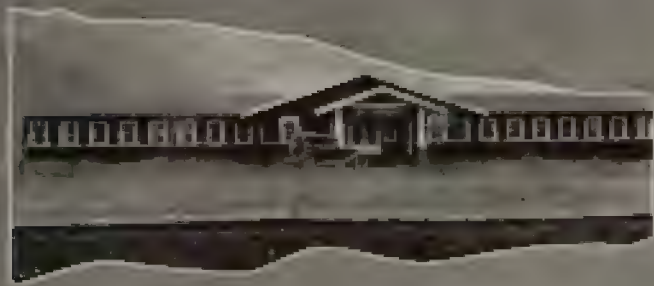


A. S. U. M. polls on Aler Day. Student workers put on the nose bag. Shame on you Prexy. Don't take much stock in that. Warm it up please, Mister. Athletes improve the grid-iron and track. High court convenes.



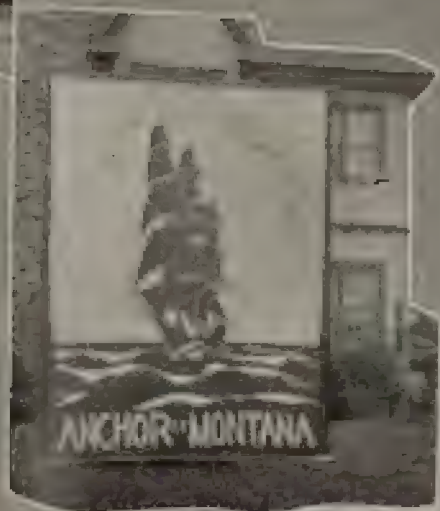
La Gualtino. Aber Day's High Mogul, Manager Bill Rohlf's. Clean her up and haul her away. The Denn's girls. Police on the job. Is it art for art's sake? Faculty go into a huddle. Larry the lamp lighter and his assistants, with their paint pots.





Headquarters. Shoulder to shoulder . . . learning the tricks of the trade.  
Company . . . attention!



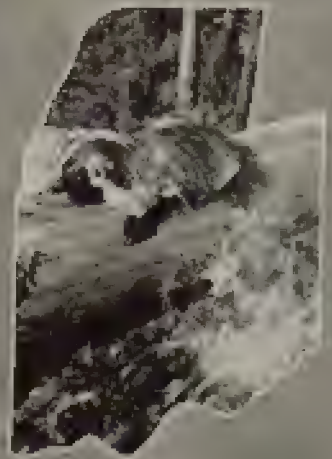
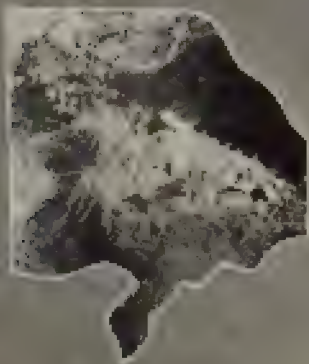
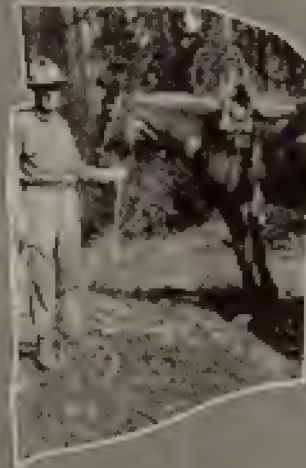
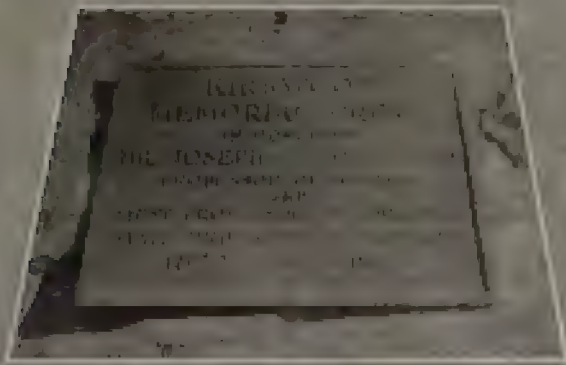


Interscholastic track meet house decorations. Sigma Alpha Epsilon, first prize winner among fraternities; Alpha Chi Omega, first prize winner among sororities; Phi Sigma Kappa, Alpha Xi Delta, Sigma Phi Epsilon, Delta Sigma Lambda (second prize among fraternities), and Delta Gamma (second prize among sororities).



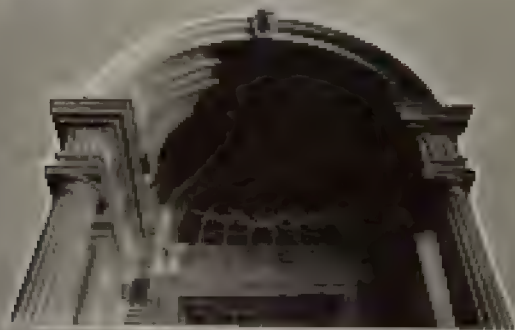
Contestants parade the opening day of the big meet. They're off! 100 yard jaunt. A new record in the broad jump. The wind-up of a long grid. No, he isn't taking a rest. On the up and up. Duncan breaks the tape for a first ribbon. Saylor takes an easy victory. Wet sopranos, and no more green caps.





In memoriam. The School of Forestry building. Full pack and ready for the fire areas. Former Montana man directs fire brigades. On duty but time for a picture. A rattler ready to strike. Babe the Big Blue Ox rolls her hoops. Good morning, sir. Photographs secured through the courtesy of Carter Quinlan.

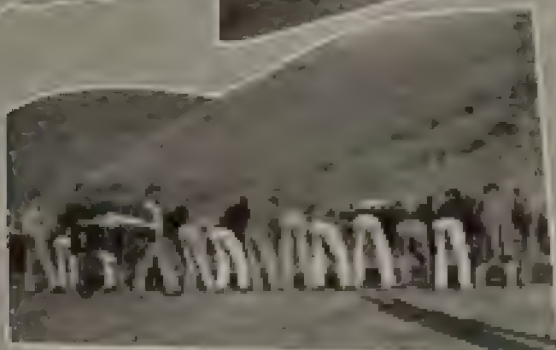




The graceful arch of the Forestry building, Montana's newest edifice. Costume prize winners at the annual Foresters' Ball. Let's quaff a stein. Get away from those swinging doors. Dr. Schenck and Franklin. They even polished the rail.

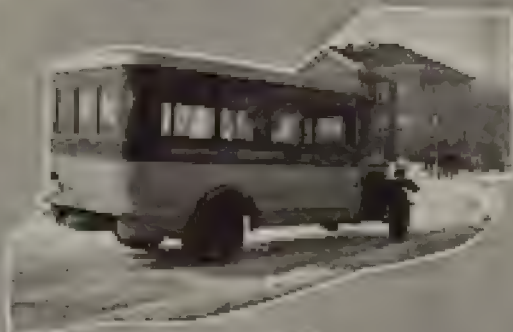


**U.S.C.  
TULANE**  
*TICKETS ON  
SALE HERE!*  
**SAT. 11B.6**



Smex, Grizzly mascot. A full house at the Grizzly-Congar fricas. Old Sentinel as a parade silhouette. Grizzly-Bobcat bands parade before the "big game" in Butte. When Smexy meets Prexy. Middle. There'll be a hot time in the old town tonight. Keep your sunny side up. No gain.





The first bundle. A Mountain range. Tom had, he was a nice boy. Just more campuses.  
The substitute. From the clock tower. Foresters' wood tester.



# ACTIVITIES

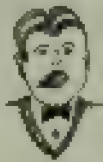


STAGE

VARSITY VODVIL



GLEE CLUB



DRAMATICS

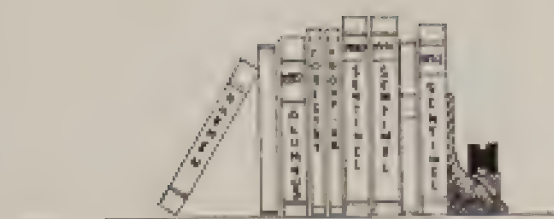


PUBLICATIONS





# PUBLICATIONS



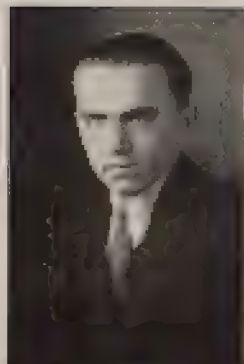


WALTER P. COONEY  
Editor



KENNETH VERHAGEN  
Business Manager

## The 1932 Sentinel Staff



TOM MOONEY  
Associate Editor



FRIEDA MCCALL  
Associate Editor



DICK SCHENFELDER  
Assistant Editor



EDITH ASTLE  
Humorist



IRENE VALONAS  
Editor Book 1



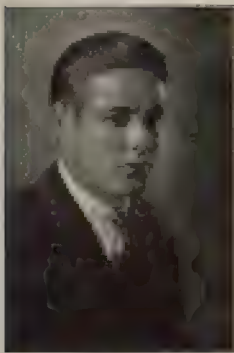
JERRY ALQUIST  
Editor Book 2



FRED STEINER  
Sports Editor



ROBERT LATTIE  
Artist



JIM NUTTER  
Editor Book 1



PAT RIGAN  
Editor Book 6



JOHN DAHLIN  
Asst. Business Mgr.



HONORA KENNEDY  
Assistant



STANLEY HILL  
Assistant



MARGARET RAPP  
Women's Sports



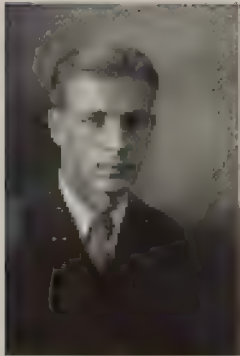
# THE STAFF



PHILIP COMPTON  
Assistant Editor



MICHAEL KENNEDY  
Assistant Editor



KERMIT CARROLL  
Circulation Mgr.



KATHLEEN HARRIGAN  
Assistant



PHILIP PATTERSON  
Art Assistant



MICHAEL SHERIDAN  
Assistant



BETTY FORD  
Assistant



ALLEN COWPERTHWAITTE  
Assistant



THOMAS MOONEY  
Editor



CARL DAVID OLSSON  
Business Manager

## The Montana Kaimin

Since its beginning as a literary magazine in June of 1898, the Montana Kaimin, official publication of the students of the State University, has done much to shape campus opinion. Published twice a week, on Tuesday and Friday, it reflects current happenings of the student body and faculty.

Organization of the newspaper is divided into two phases—the editorial and business departments. Under the former comes the actual news gathering,



The Kaimin Staff



Putting out the Kaimin

writing and editing. The soliciting of advertisements and their writing is confined to the advertising department of the publication, but the work in both divisions is accomplished entirely by staffs of students, the faculty of the School of Journalism acting only in an advisory capacity when called upon.

Printing of the paper is done by the School of Journalism Press, headed by C. W. Hardy. Mrs. Inez Abbott is instructor in the laboratory course in news writing which prepares copy for the Kaimin, and A. L. Stone, dean of the School of Journalism, instructs the newspaper administration class.

Prior to 1931 the editor of the Kaimin was elected by popular vote of the student body in the general A. S. U. M. elections held in the spring. In 1931 the measure was introduced and passed which delegated the appointment of Kaimin editor and business manager to Central Board, representative student and faculty body, upon the recommendation of Publications board. The latter group is made up of all the editors of all official publications on the campus.

The name "Kaimin" is the Selish word which means "a message," or, literally, "anything in black and white," and was submitted as a name for the paper in a contest held the year of its inauguration by Margaret Ronan, graduate of the State University with the class of 1902.

The Kaimin celebrated the completion of the first year of its printing at the Journalism "Shack" on February 20, 1932. The mechanical equipment of the school was donated by O. S. Warden of the Great Falls Tribune, Anaconda Copper Mining company; J. D. Scanton of the Miles City Star; W. A. Scurney of the Western Newspaper union, Billings; W. O. Ensign, Deer Lodge, and the Mergenthaler Linotype company, besides other Montana publishers who contributed materials and services.

Thomas Mooney, Missoula, and Joel Overholser, Fort Benton, have been editor and business manager, respectively, of the Kaimin for the year 1931-32.





Standing: Coon, Whitaker, Frykman  
 Seated: Benson, Woodfolk, Beechel, Hawes

# Forestry Kaimin

## STAFF

Joseph Woodfolk  
 Kenneth Beechel  
 Howard Coon  
 Richard Whitaker  
 Fred Benson

Managing Editor  
 News Editor  
 Business Manager  
 Assistant Editor  
 Assistant Editor

The Forestry Kaimin is the principal medium through which forestry alumni retain their contacts with the school, and students and faculty reflect their interest in the progress of the field.

Developing from a small pamphlet published first in 1915, the eighteenth edition has attained magazine size.

It reviews the activities of the school, including the traditional Foresters' Ball, the Rifle club, Forestry club and the skating rink which the latter sponsored this year. Druids and intramural sports have their place in the publication. Circulation and the directory of alumni were managed by Joel Frykman and Evans Hawes.

Pictures of wild life and scenic cuts emphasize the western atmosphere which the publication effects. Feature articles are illustrated with outdoor scenes, many of them taken in western Montana.



Joe Woodfolk



JESSIE CAMBREN



H. G. MERRIAM

## Alumnus

The Montana Alumnus is published quarterly as the official organ of the Alumni association of the State University of Montana. Jessie Cambren has edited the Alumnus this year and last.

News of alumni sent in by class secretaries has resulted in the publication this year of a more complete class notes section than is included in any other alumni magazine received in the University exchange.

"What Alumni Are Doing" and "The Foreign Letter Bag" are included in the table of contents regularly. The Alumnus was the chief disseminator of plans and announcements for the 1932 reunion.

## Frontier

Carefully selected literary contributions having the northwest as their background make up the Frontier, regional magazine, edited and published by Prof. H. G. Merriam, chairman of the Department of English.

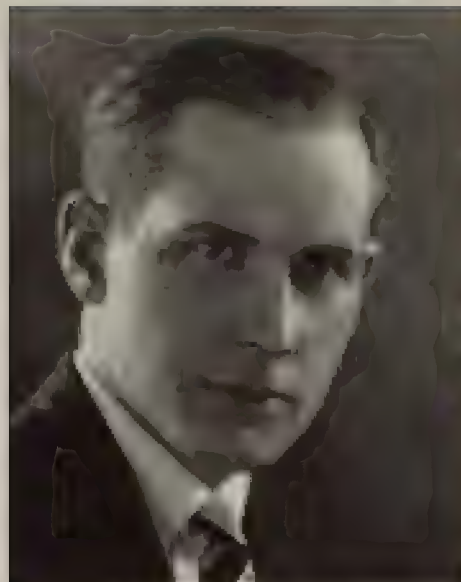
High literary worth is required of the stories, poems, sketches and articles appearing in the magazine. Brassil Fitzgerald and Grace Stone Coates are contributing members of the editorial staff. Harvey Thirloway was circulation manager during the past year and Robert Blakeslee acted as business manager.

The Frontier has gained recognition throughout the country because of its merit and contribution to regional literature. During the past few years Edward J. O'Brien has included a number of stories from the Frontier in his annual collection of "Best Short Stories."

# STAGE







WILLIAM ANGUS  
Director

## Little Theatre

Montana Masquers are completing their twenty eighth year of activity and have as their record the production of approximately 150 plays of various lengths. During the last five years, campus dramatic productions have been directed by William Angus, whose resignation as assistant professor of English will be effective next year, when he leaves to begin work on his doctorate at the University of Iowa.

The Montana Masquers produced one major play each quarter of 1931-32. "Devil's Disciple," by George Bernard Shaw, given at the Little Theatre November 20 and 21, was the most ambitious production undertaken during fall quarter. Shaw glorifies the American rebels of the Revolutionary war in the witty and melodramatic vehicle.

Leading members of the cast were: Alice Taylor, Gene Manis, Leslie Pace, Fred Moulton, Ruth Bernier, Jeanette McGrade, Peter Meloy and Taylor Gardner. The play was taken to Butte, Bozeman, Helena and Hamilton, and served as the exchange play between the State University and the State College.

Three student-acted and student-directed one-acts were given October 29. They were: "Rich Man, Poor Man," "The Diamond Necklace" and "Confessional." "The Enchanted Hour," also a one-act, was produced March 10 on the same program with the Spanish three-act, "Sueno de Una Noche de Agosto," which was directed by Cecile Sughrue.



A scene from "Death Takes a Holiday"

"Death Takes a Holiday," major play of the winter quarter, was given at the Fox-Wilma theatre, February 19, for the benefit of the Alumni association. Delos Thorson gave a moving and impressive interpretation of the character "Death" who becomes a self invited guest at a house-party in an Italian villa, the object of his visit being to find out why people fear and dread him. Jeanette McGrade, Ossia Taylor, William Brown were outstanding in their parts. Others in the cast were: Helen Fleming, Ruth Wallace, Gene Manis, Sylvia Sweetman, Radcliffe Maxey, William Angus, Arthur Roberts, Marian Hanford and Philip Miller.

Eugene O'Neill's play, "The Hairy Ape," staged April 7, offered an opportunity for variety of characterization that was well executed by the cast. Eddie Krause was outstanding in the role of Yank Smith.

"Bumblepuppy" by J. W. Rogers, directed by Ruth Bernier, and "A Wedding" by John Kirkpatrick, directed by Robert Busey and Eleanor Boles, were the two one acts presented May 5.

"The Far-Off Hills" by Lennox Robinson was the major play for spring quarter. This Irish light comedy was given April 29 and 30. It was directed by William Angus and the cast included: David Duncan, Patrick Clancy; Betty Browne, Marian, his daughter; Kathryn Smith, Ducky, and Virginia Cooney, Pet, two other daughters; Ted Cooney, Dick Delaney; Grant Kelleher, Harold Mahone; Phoebe Patterson, Susie Tynan; Stanley Trachta, Pierce Hagarty. The play was well-received and served as a fitting climax to the productions of the year.

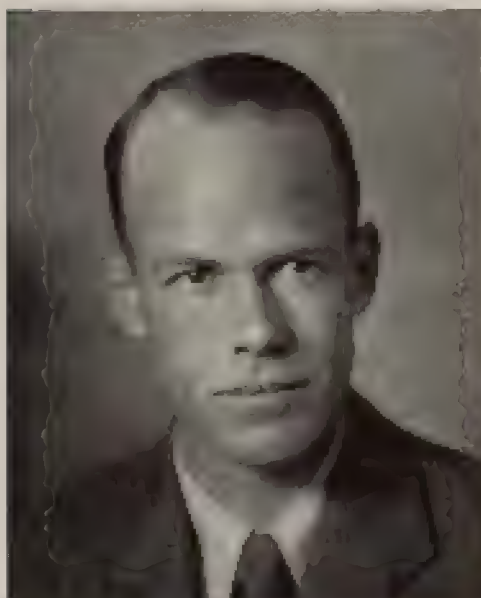


Top Row: Bollman, Swaingo, Magntisen, Lawzenborfer, Rhule, Gullickson.  
 Standing: Hoffman, Borge, Wickware, Farnsworth, Raquet, Samselle, Swartzberg  
 Seated: Carline, Thiboway, East, Larson, Kelleher, Alexander

## Debate

With increased student participation in forensic activities fostered by the Montana Debate union, the popularity of debate as an extra-curricular activity has taken great strides forward this year.

State University teams have encountered fifteen outside teams this year on the Pi Kappa Delta question: Resolved, that Congress should enact legislation providing for centralized control of industry. Four traveling teams were entertained by Montana—a Turkish team from Robert college in Istanbul, Turkey; two representatives from the University of Pittsburgh; two from the College of Puget Sound, and a team from the University of Wyoming. Audience decisions in the first three engagements gave the visitors close victories. The Wyoming encounter was a non-decision debate.



DARRELL PARKER  
 Debate Coach

The most extensive undertaking of the season was the 2,000-mile Pacific coast tour taken early in March by Grant Kelleher of Butte and Edward Alexander of Whitehall. This trip resulted in five favorable decisions, two losses and two non-decisions.





Standing: Allen, Hemgren, Cross, Roberts  
 Seated: Metlen, Hawks, Kennedy, Harrigan, Bravo.

# Hi-Jinx

## COMMITTEE

Michael Kennedy	- - - - -	Manager
Emma Bravo	- - - - -	Assistant Manager
Kathleen Harrigan	- - - - -	Assistant Manager
Georgia Mae Metlen	- - - - -	Dance Chairman
Jerome Frankel	- - - - -	Stage Manager
Clifton Hemgren	- - - - -	Property Manager
Nat Allen	- - - - -	Song Director

A talented cast chosen from the entire student body played in "Son of a Gun," Hi-Jinx musical comedy produced at the Fox-Wilma theatre, December 5. More than seventy students participated in the 1932 production as members of the cast and choruses.

Helen Price took the leading role. Arthur Roberts, Richard Traxler, Marion Smith, Howard Gullickson and Anna Mae Crouse played major parts. Other members of the cast were: Al Rudolph, Crawford Beckett, Leslie Pace, Martha Kimball, Harold Stearns and Ruth Wallace.

There were three acts of comedy developing from the entanglements of an ex-cowboy "stunt" man in his impersonation of the scion of a wealthy New York family.

Hi-Jinx owes its origin to the State University band, its members staging an "All Nations Show" in 1906.



## Men's Glee Club

The Men's Glee club made its first appearance of the year early in November with the presentation of a program in Dean DeLoss Smith's studio. Several public recitals were given by the club later. It presented two numbers at the convocation celebrating the bi-centennial of Washington's birth. It also sang with the Women's Glee club when awards were presented to the winners of Interscholastic Track events, and in combination with the Missoula Choral society at Commencement.

The club this year has been affiliated with the glee clubs of America and presented some of the numbers used by the associated clubs at their concert in New York City. Membership of the State University Glee Club increased considerably this year.

Members of the club and their positions follow: First tenor, Nemesio Borge, Alvin Rudolph, Robert Somerville, Earle Drost, John Sasek; second tenor, Robert Fetterly, Charles Johnson, Carl Lantz, Robert Wickware, Jack Jefferson, Arnold Peterson, Howard Rutherford; baritone, Dennis Rovero, Wilbur Wood, Raymond Smalley, Lewis Coriell, George Wilcox, George Dickel; first bass, Edward Carroll; second bass, Edwin McKenzie, Donald Aldrich, Richard Traxler, Joel Frykman, Eugene Hurton.



## Women's Glee Club

The State University Women's Glee club has a personnel of more than thirty women representing the best vocal talent of the campus. Under the direction of Dean DeLoss Smith it presented a number of recitals during the year in combination with the Men's Glee club.

Its activities this year, in addition to the presentation of four recitals on the campus, included a program of songs given in Stevensville April 27. It entertained Track Meet contestants May 13 with several numbers when the winners of Interscholastic events received their awards. The two glee clubs united with the Missoula Choral society to provide music at the Baccalaureate service and the Commencement program.

The Women's Glee club this year is superior to any organized in previous years. DeLoss Smith, dean of the School of Music, is the director.

The personnel follows: First soprano, Mary Castles, Lura Jean Hunt, Martha Kimball, Frances Graves, Dorothy Dee Miller, Joy Browning, Ramona Noll, June Mason, Rogetta Perry, Ossia Taylor, Jane Stevenson, Helen Kelleher; second soprano, Annie Evans, Marion Hanford, Louise Kemp, Genevieve Krum, Ellen Shields, Gladys Avery, Harriet Gillespie, Rhoda Cougill, Jean Gordon, Esther Lantz; alto, Ruth Jones, June Hartley, Mary Brickson, Kathleen Dunn, Ruth Harris, Alice Helen Patterson, Martha Davis.





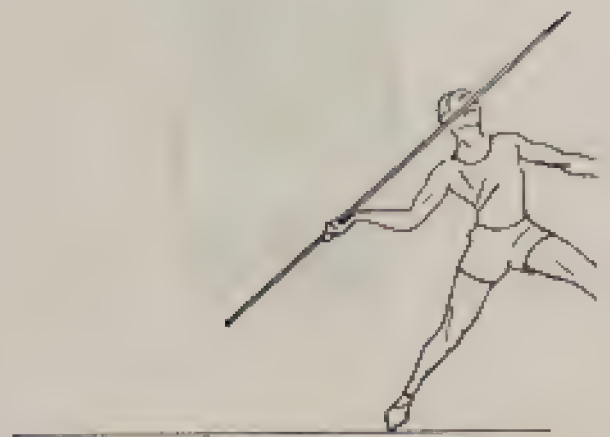
## State University Band

The Grizzly band in uniforms of copper, silver and gold add color and harmony to State University athletic contests, rallies and R. O. T. C. parades. Forty two selected band members led the parade preceding the Grizzly-Bobcat game in Butte and played a joint program with the Bobcat band on Clark field before the game. They joined the parade of Interscholastic contestants on Dornblaser field with the opening of the 1932 Track and Field meet and played during intermissions.

The Grizzly band, under the direction of Roy E. Freeburg, is recognized by State University students as an integral part of the majority of campus activities.

The personnel of the Grizzly band includes: Student leader, George Boyington; manager, Vernon Hoven; drum major, Sergeant Clarence Peterson; trumpets, Andreas Grande, Wilbur Hewitt, Fred O'Dell, Eldon Couey, John Purvis, Jack Robinson, Raymond Smalley; trombones, George Baldwin, Kermit Eckley, Philip Miller, Wesley Scott; clarinets, Lloyd Carmichael, Bill Clarke, George Dickel, Louis Gomavitz, William Hoskins, Curtis Hughes, Robert Johnson, James Parkinson; saxophones, Lloyd Bernhard, Charles Krebs, Robert Paterson; French horns, Dennis Rovero, Dudley Brown; baritone, Archie Kimpel, bass tuba, Edward Jeffrey; snare drum, Jack Bainton, Fred Compton, Phil Pollard; bass drum, Richard Farnsworth; flute, Jack Lewellen

# INTERSCHOLASTIC





Butte High School Team

## Interscholastic

Butte public high school won the 1931 Interscholastic Track and Field Meet with a total of  $17 \frac{1}{3}$  points. Billings high school took a close second place with  $16 \frac{1}{3}$  points. Butte and Billings also placed first and second in the half-mile relay race which does not count in the final rating.

Hamilton of White Sulphur Springs was high point man with an individual score of  $12 \frac{1}{2}$  points. Maple of Belfry was second with 11, and Duncan of Billings, third with 10.

Four state records fell before Montana high school athletes last year. Peden of Custer county broke the state record in the 100-yard dash and clipped the 220-yard dash record to 22.4 seconds. Hamilton leaped 22 feet  $3 \frac{3}{8}$  inches for a new record in the broad jump, and Eldridge of Havre broke the old high jump record at 5 feet  $11 \frac{1}{4}$  inches.



Hamilton

Winners of the meet received a total of 70 prizes in 14 events. In addition to the Missoula cup given the winning school temporarily, Butte received the Rotary cup awarded permanently to the school winning the Interscholastic meet. Winners of first, second, third, fourth and fifth places in all track and field events were awarded gold, silver, and bronze medals, and colored ribbons respectively. Gold, silver and bronze medals were also carried off by the winners of the three high places in the golf tournament. Gold medals were awarded to three tennis victors—singles, and each of the doubles winners.





Butte High School Relay Team.

Libby high school jumped into an early lead in the first day with eight points. W. Williams took second in both the shot put and the discus throw for his team. The points were sufficient to place him in individual honors for the first day.

George Varnell, sports editor of the Seattle Times, pulled the trigger for the sixteenth year at the Interscholastic.

R. Saylor, Missoula, topped the 220-yard low hurdles in the phenomenal time of 25.6 seconds to beat the favorite of the day—Maple of Bellry. His time was not allowed as he knocked down two hurdles.

R. O'Malley upset R. Peden, the record-holder, in the century, winning in 10.2 seconds. R. Emerson's fifth place in that race elevated Butte high into the lead the second day which they never relinquished throughout the rest of the meet. The total amassed by the Purple Ponies—17  $\frac{1}{3}$  points—is the smallest total ever to bring a team into the Interscholastic Track and Field championship.

D. Duncan, Billings, winner of the half mile in the first race, took the lead at the start of the second lap of the mile run and held it to the end, finishing in 4 minutes 46.6 seconds. J. Rose challenged him on the home stretch but Duncan drove ahead to win.

C. Maple, Bellry, won the high hurdles in 16.2 seconds, again tying his own record for the event and repeating his victory of the year before. E. Popovich, Butte, added four points to the Purple's total with a fast stride between the sticks.

A long, apparently effortless stride which carried him past E. Miksch of Simms on the last corner, won the second half mile race for J. Cornelius of Roman. Exhausted by the terrific pace he had set in the first lap, Miksch could place no better than fourth.



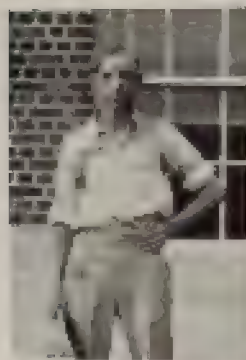
Jacobs and Grantier

Grantier

## Tennis

Bob Grantier, Missoula, by defeating Randolph Jacobs, also of Missoula, holder of the Interscholastic singles tennis title for 1930, won the 1931 championship. Grantier, champion in 1929, defeated Jacobs, 6-4 and 6-3.

Grantier and Jacobs composed the team which defeated R. Ormsbee and G. Plotts of Hamilton in the doubles contest, making Missoula the 1931 winner. The match was 6-3, 4-6, 6-3. Sixteen teams were entered in the doubles and 36 men in the singles.



Wagner

## Golf

G. Wagner of Malta defeated R. Merhar of Butte, 1929-1930 Interscholastic golf champion, in a closely matched race for the championship golf ribbon on the State University course May 15. Wagner's score for 36 holes was 161 and Merhar's 162. J. Skedd of Butte took third.

Harry Adams was in charge of golf and tennis tournaments.



Kalispell wins the theatre contest.

## Little Theatre Tournament

Flathead county high school won the fifth annual Interscholastic one act play contest for the second successive time with its presentation of "The Giant's Stair" by Wilbur Daniel Steel. Second place in the 1931 tournament went to Anaconda high school. Anaconda also placed second the previous year. Flathead county high school retained the Montana Masquers' cup which goes to the winner of three successive contests. It also received a cash award of \$25 and expenses of the cast. Silk banners were presented by the Montana Masquers to the four schools competing in the finals, including Butte public high school and Whitefish high school.

Helen Peterson of Kalispell, playing the part of Til, a mentally-deranged farm woman, in "The Giant's Stair," was chosen the best actress of the tournament. Honorable mention for their performances was accorded Marcia Shellenbarger of Anaconda, Mary Rowland of Kalispell, and Ruth Perham, Butte.

Edward Kretzer, Anaconda, in the role of Daniel, received the gold medal award as best actor, and Darrel Dickey, Kalispell, was given honorable mention.

Schools entered in the contest were: Hamilton, Missoula, Sacred Heart Academy (Missoula), Corvallis, Anaconda, Billings, Thompson Falls, Libby, Whitehall, Lewistown, Bozeman, Geraldine, Belgrade, Whitefish, Kalispell, Fort Benton, Big Timber, Butte and Belt.



Helen Peterson



Edward Kretzer





Missoula County High School Paper

## Editorial Association

"The Konah" of Missoula county high school was awarded a silver cup as the winning newspaper in Class A of the 1931 High School Editorial association contest. "The Kyote" of Billings high placed second and the "Iniwai," Great Falls, third.

"The Centralite" of Girls' Central, Butte, was judged first in the Class B section for newspapers representing schools of 300-500 enrollment. The Class C award was won by "The Antelope" of Baker, and "The Crazy Mountain Monitor," published at Clyde Park, won the Class D award for mimeographed sheets. The four winners in the newspaper contest received silver cups presented by the Montana Press association and by Sigma Delta Chi and Theta Sigma Phi, journalism fraternities.

More than eighty delegates from the editorial staff of high school newspapers attended the sessions of the Montana Editorial association May 14 and 15. Copies of the Montana High School Editor, official publication of the organization, containing hints on make up and news of the high school activities throughout the state, were distributed.

## Essay Contest

Mary Asbury of Hardin won the Interscholastic essay contest conducted by the Department of English with her essay on Indians entitled "Crows." She was awarded a scholarship by the State Board of Education upon recommendation of the State University faculty and was presented with a gold medal offered by the State University.



Hoffner

Taylor

## Declamation

Ossia Taylor, representing Missoula county high school, won the girls' declamatory contest May 14, giving "The Death Disk" by Mark Twain. Harry Hoffner, Butte, placed first in the boys' division with "Submerged" by Cottman and Shaw.

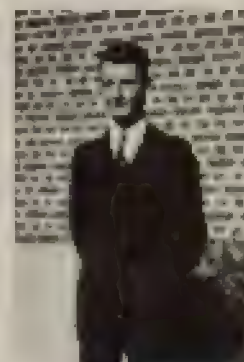
Ruth Skillingstad of Powell county high school placed second in the girls' section. Eugene Manis, Hamilton, was second in the boys' declamatory contest. Judges for the final contest were Mrs. R. H. Jesse, Mrs. W. G. Bateman, and Prof. W. P. Clark.

## Debate



Pace      Speck

Whitehall high school, represented by Jack Pace and Carol Speck, won the Interscholastic debate championship. They defeated the Lewistown team, composed of Bessie Harrison and Peggy Marshall. The teams used the cross examination style of debate in the rebuttal. Jack Pace was awarded the Dixon medal for the best individual debator. The teams debated the "Chain Store" question.



Jack Pace



Standing — Loftsgaarden, M. Kennedy, L. Kennedy, Hendon, Curtis, Crego, Warden, Barnes, Blakeslee, Evenson, Sanders.  
 Seated — Breen, Connolly, Gerson, Shallenberger, Gaughan, Coe, Bravo, Borders.

## Students' Interscholastic Committee

Members of the Students' Interscholastic committee are selected by members of the Faculty Interscholastic committee to co-operate with the larger group. T. C. Spaulding, dean of the School of Forestry, who has for the past 11 years been responsible for the group's activities, resigned the position in 1932. His successor was Dr. G. D. Shallenberger, chairman of the Department of Physics. He had as his duties the supervision of the housing of all visiting men contestants. Paul Bischoff, instructor in the Department of Foreign Languages, assisted him.

Charles Gaughan was chairman of the student committee and Hazel Borders acted as vice chairman.

The campus decoration group had the work of decorating the campus and directed the erection of the grove on the oval. Robert Blakeslee headed the committee. Other members were Leland Kennedy, Millard Evenson, Clyde Crego and Curtis Barnes.

House decorations committee was under the chairmanship of Owen Loftsgaarden. He had the assistance of Horace Warden, Virginia Connolly, Mary Breen and Emma Bravo.

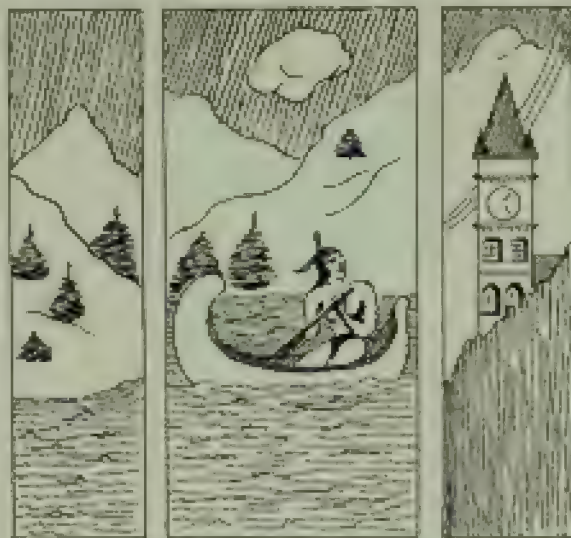
John Curtis was in charge of publicity, with Michael Kennedy assisting. Spur and Bear Paw, sophomore honoraries, had the duty of meeting all guests and transporting them to their places of residence during the meet. Lina Greene, Spur president, was assisted by Kathryn Coe.

Bob Hendon, A. S. U. M. president and Claget Sanders, Chief Grizzly of Bear Paw, directed the work of Bear Paw.



# ADVERTISING

STATE UNIVERSITY



HEART OF THE ROCKIES





# The Life of Peter Zwilt

## Together with a Searching Investigation of His Letters and Love Life

### I

#### BACKGROUND

The clever use of a young lady's tongue in a game of postoffice is said to have started the romance which culminated in the marriage of Peter Zwilt's mother and father.

Horatio Zwilt was a struggling young blacksmith, but gave up the struggle on May 13, 1907, when his marriage to Blossom Blotz was recorded in the big book kept by the sexton of the First Church of the North Side in Buffalo. The sexton later wrote to his brother in Utica (from *Sex Lives of Sextons*):

"We had a charming funeral here

today, except that our pastor (George Rumph, 1879-1920) slipped in the mud and fell into the grave, causing a little delay. His frock coat got all muddy in back and it cost \$1.50 to have it cleaned."

The sexton, as can be seen from his letter, was not given to fabricating stories, so it is probably true that Blossom and Horatio were really married and the sexton wasn't just fooling. Why the sexton's brother moved to Utica is not known, but it has been established that he left Buffalo rather suddenly sometime in April, 1907.

Horatio Zwilt and his young Bride

*This Page*

*Contributed by* **MISSOULA MERCANTILE Co.**

*For Student*

*Autographs*



The  
**Peterson Drug  
 Company**

Specialize in highest quality products

Agents for

**DOROTHY GRAY FACIAL  
 PREPARATIONS**

HOUBIGANT'S, CIRO'S, COTY'S  
 and YARDLEY'S PERFUMES, etc.

WHITMAN'S FAMOUS CANDIES  
 WATERMAN'S FOUNTAIN PENS

EATON, CRANE AND PIKE  
 STATIONERY

Monograms, Crests, etc., die stamped on  
 stationery, and programs

# Beauty



## BARBARA'S VANITY SHOP



# Cosmetics

1st Nat'l Bank Bldg. MISSOURI A

S  
P  
O  
R  
T  
T  
O  
G  
S



D  
R  
E  
S  
S  
W  
E  
A  
R

For University Men  
**The Sport Shop**

returned from Niagara Falls and set up house-keeping somewhere down on 13rd street. It was in that very house that Peter Zwill was born, February 3, 1908.

Other relatives of Peter Zwill are hard to find. There was a Laef Zwill who lived in Albany, but he was hanged in 1873 and had never known Blossom Blotz or Blossom Zwill, so it is doubtful if he had anything to do with Peter Zwill.

### II

#### EARLY ASSOCIATIONS

Of Peter's youth and early education, little is known. His father moved to Burlington, Iowa, while Peter was yet a small boy and though we have no record of his leaving there, we know he did, because he spent several years in Leavenworth and he would have found that impossible, had he remained in Burlington. There is also a record

The Most Centrally Located Logical Meeting Place

# FLORENCE HOTEL

Private Rooms for Parties of Ten to Two Hundred



Seasonable food carefully prepared.  
Most reasonable prices.

Courteous, attentive service throughout.  
Dressing rooms and parlors.



## Bozeman's Beautiful New Hotel Baxter

Under the Same Management

For Reservations Phone  
R. B. MacNAB

of a shipment of household goods consigned to Horatio Zwilt at Ogallala, Nebraska (pop. 1910; 683), where a claim is on file for damage to a easter of a dining room table. A letter to the claim agent of the railroad is signed "H. Zwilt" and the signature bears remarkable resemblance to the signature in the time-book in the blacksmith shop in Buffalo where Horatio was once employed.

Mr. Zwilt said: "Please cancel my claim for damage to the easter on my dining room table. I have found that a piece of two-by-four supports the table quite well."

The letter was short and businesslike. Not a word did Horatio say of the precocity of his son, Peter; not a word of his heartache and longing; not a word that indicated any emotional attraction for a blonde across the street. Horatio

*Herrick's*  
FAMOUS  
ICE CREAM

Western Montana's Pride



At your neighborhood store

At your cafe

For your party

For your banquet

ASK FOR

**HERRICK'S FAMOUS  
ICE CREAM**

and you can't go wrong. Our quality and service have given our ice cream the popularity it has always enjoyed.



# SHOES---

For—

SPORT  
STREET  
DRESS

## DIXON & HOON

133 Higgins

— QUALITY —

Stationery

Drugs

Cosmetics

A PRESCRIPTION STORE

You can always save money  
at your Walgreen System  
Drug Store.

## Public Drug Store

Florence Hotel Bldg.

MISSOULA, MONTANA

N. B. MITHUN

BOB HARPER

PHOTOGRAPHS  
that  
LIVE



## MELANDER STUDIO

PHONE 3729

612 So. Higgins Ave.

MISSOULA

::

MONTANA

Zwilt was like that, seething with emotion internally, but never giving it voice, not even to the claim agent. There is no indication that a blonde ever lived across the street from Heratio, although the Ogallala city directory shows a Mrs. Griggs living in Ogallala during that decade. She later wrote to her niece in Fargo (Author's Scrapbook):

"Charlie has the mumps and I must keep him indoors. The weather has been quite disagreeable lately."

Charlie, to whom Mrs. Griggs lovingly refers, was probably her stepson, Charles Glogson, who was imprisoned in 1926 for robbing graves. No mention of the Griggs family appears in Peter Zwilt's later writings.

Probably the first of Peter's writing was done in Ogallala, where a note was found among his school books. "Jo



# EDGEWORTH

SMOKING TOBACCO



“The Smoker’s Diploma”

LARUS & BRO. CO.

Since 1877

RICHMOND, VIRGINIA

soph Glatz loves Mabel,” was all the note said, but it shows an early tendency toward keen observation and an irreplaceable desire for self-expression.

### III

#### EDUCATION (EARLY)

Shortly after Peter’s parents moved to Montana (1920), his literary career began in earnest. It is indeed a far cry from his first writings in Ogalalla to the poem he handed to his language teacher in Montana upon the occasion of his being allowed to sit beside Dorothy Dee:

I wish I were a robin;  
I’d flit from bough to bough,  
And pour sweet music to the wind  
To charm our bossy cow.

Some critics have pointed out that, as this poem was written shortly after Christmas, Peter probably copied it

## Missoula Drug Company

THE REXALL STORE

Elizabeth Arden Preparations  
Guerlain and Corday  
Perfumes

Fine Candies

-:-

PHONE 3171

Free Delivery

## HIGH GRADE PIANOS

The New  
RCA, VICTOR and  
PHILCO RADIOS  
with  
Electrola



Headquarters for  
Teaching Material for the  
State University of Montana

## DICKINSON PIANO CO.

218 Higgins Ave. Missoula, Mont.

## Memory, Travel and Diary Books

FOR THE GRADUATE

Greeting Cards and Gifts,  
including the ever useful

## PORTABLE TYPEWRITERS



## The Office Supply Co.

Florence Hotel Building  
Student Headquarters

## Blue Green Hart Gas---

Thurmar Motor Oils  
H. R. Golden Motor Oils

Three Fully Equipped Service  
Stations located at

South Higgins and Sixth Sts.  
North Higgins and Alder Sts.  
North First St. and Wolf Ave.

"A Local Industry"

## Hart Refineries

Buy at the stations with the sign of the  
RED HEART

from Horatio Alger, Jr., who has a similar poem, but to the lover of beautiful things, it only indicates how subtle Peter's perception was. Of course, "bossy" might have been replaced with "pensive," but it has not been established as yet that the Zwillt cow was at all pensive.

### IV

#### EDUCATION (NOT SO EARLY)

Except for an occasional poem of doubtful merit and morality, we are unable to find where there was any literary activity on the part of Peter Zwillt until he finished high school. One of his aunts was married to Felix Glunt and was the recipient of several letters from Peter, but while a few of them have intrinsic worth, the others are merely written for the purpose of establishing friendly relations at Christmas.

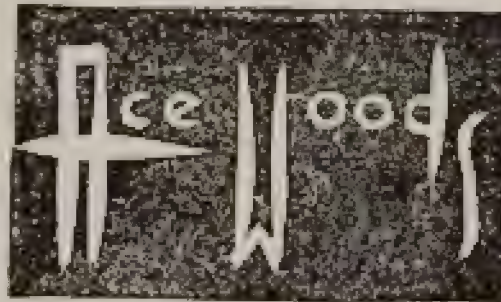


## You're Right Pop.

One day we were taking a picture of a University student and his father. We suggested that it might make a good picture for the boy to stand with his hand on his father's shoulder. The father replied that it would be much more natural for the boy to stand with his hand in the father's pocket.

But just the same Dad don't forget that college days are the ones that will be remembered in the years to come.

We hope that we have aided in preserving these memories by faithfully portraying campus life with the camera.



115 E. Higgins

Near Wilma

## STYLED FOR Campus Wear Brownbilt Shoes



## BROWNBILT SHOE STORE

BUSTER BROWN SHOES

To his maiden aunt, Letta Zwilt, he writes: "You don't know what you've missed." Peter was speaking of a birthday party he had attended recently. It was shortly after this that Peter Zwilt entered the State University.

### V COLLEGE LIFE

Of his freshman year in college, Peter later wrote to his cousin: "I was really too young and didn't know much. I wish I had known what I know now." Here he has voiced the articulate wish of generations and generations of college men; he has given tongue to that elusive phrase for which collegians have been groping for centuries. To Peter was left the distinction of putting it into words.

It was during his freshman year that



FOR GOOD WORK

and

Five Hour Service

send it to the

## Master Cleaner and Dyer

Montana's best equipped cleaning and  
dyeing plant

PHONE 2186

205 W. FRONT

We Call for and Deliver

Leaven  
the future  
with ambition  
and optimism

## Eddy's Bakeries

Helena

Butte

Missoula

Great Falls and Lewistown



Official AAA Service

Always Open

Storage Our Specialty

Wrecking Car Service

Repairs

## STAR GARAGE

W. W. WICKES, Prop.

MISSOULA

MONTANA

he read Kelland, who, as he confessed  
years later, made him

See through things that seem

So commonplace;

Beneath a Eugenic hat,

A pretty face.

Very little of Peter's actual college  
life is of much interest. A few ro-  
mantic moments were probably experi-  
enced, but from his letters we gather  
that life was a little dull. He writes  
of (Author's Collection) "standing  
upon the bridge at sunrise, drinking in  
the beauty of the early morning." Lit-  
tle did Zwily know that the beautiful  
Miss Binx was standing on the other  
bridge at the same time, but she was.  
She was not, however, doing any drink-  
ing; she had done her drinking in the  
magic hours of late evening and it is  
doubtful that, had she raised her head,  
she would have even seen the sunrise.

*Don't Just Ask For*

BUTTER, EGGS  
or ICE CREAM

*Insist On*

*Sentinel*  
BRAND

and be satisfied

**Sentinel-Missoula Creamery, Inc.**

MISSOULA, MONTANA

PHONE 3131

**BUTTE CLEANERS**

**"Kleaners that Klean"**

506-B South Higgins Avenue

All Work Absolutely  
Guaranteed

**Order Your Suit**

Merchant Tailored to Measure  
Student Stylists

**STEIN & SON**

Peter didn't know this, either, and it probably wouldn't have made any difference if he had. Miss Binx and Mr. Zwilt had never even met, and probably haven't yet.

"Just because I didn't know that Hawthorne didn't write anything while he was surveyor of the Port of Salem, I can't be initiated. \* \* \* I feel somewhat perturbed about it," writes Peter to a girl in East Helena (Neart's Colloerion). The girl never answered.

VI

**WHAT HAVE YOU?**

There were moments, we feel, when Zwilt displayed remarkable insight into the workings of things. In a letter to his cousin, George, who later moved to Menderville, he says (Some Collection or Other): "Some day, George, someone will dig up a portion of my skull



FLORENCE HOTEL  
**Barber Shop**

The well groomed man  
or woman possesses a  
distinct advantage in  
our competitive world.

Let us aid you.



We specialize in student hair-trimming  
for men and women.

Remodeled

Redecorated

**Hi-School Candy and Cafe**

837 So. Higgins

Next to home this is the best place  
to eat

PAPANTONY & JOHNSON, Proprietors

Soda Fountain

Sundries

**CORRECT STYLES**

For

**COLLEGE MEN**



DaCo HAM

DaCo BACON

**John R. Daily, Inc.**

115 West Front

Phone 2181

Packers of

**DACO**

MEAT PRODUCTS

Service and Quality

Branches

**MODEL MARKET**

309 N. Higgins—Phone 2835

**MISSOULA MARKET**

126 No. Higgins—Phone 2197

DaCo LARD

FRESH MEAT

about the size of a six-bit piece and the scientific world will be in another uproar. \* \* \* I shall be classified as Collegianthropus Missoulianensis and they will be able to tell all about me; that I liked blondes and two lumps of sugar in my tea and brunettes. \* \* \* Artifacts discovered will indicate that my watch needed cleaning and that I owed a cleaning bill of a dollar. \* \* \* Truly, science is a wonderful thing."

Just why Peter wrote such a letter to George has never been determined. Certainly, not for the edification of his cousin, for his cousin could not read and besides, Peter put the wrong address on the letter and George never got it. People have never really understood poor George.

Peter's class attendance was erratic, he spent enough time at University to get two or three college degrees, but



# The Western Montana National Bank

MISSOULA, MONTANA

Extends its support to

## THE SENTINEL

### B<sup>and</sup> H Jewelry Co.



Fraternity  
Jewelry  
Costume  
Jewelry

he was more interested in degrees Fahrenheit and the women who had them. To say that Zwilt did not get an education would do him a grave injustice. His education was a broad one. He probably knew more about breads than any of his contemporaries, and although his grades were not as high as some, we have reason to believe that he made them oftener.

When the faculty members finally granted him a diploma they were fully aware that he had learned many things that they couldn't teach him; that he knew more practical psychology than a psyche major; that he was more familiar with the library than any faculty member; that he knew more about eyes, ears, noses and throats than a specialist and more cures for different ailments than a doctor.

Zwilt was credited with knowing

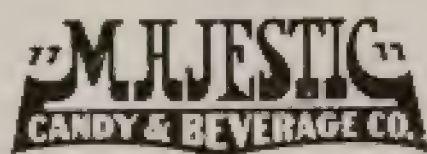
WE SOLICIT YOUR  
PATRONAGE ON

La Dez. Webster. Havana Sweets and  
Cinco Cigars

Hoffman's Box Chocolates.

CALIFRUIT Lime Rickey.

Coca Cola. Orange Crush. Bluebird.  
Hires and other Majestic Bottled Bev-  
erages now sell at 5c in sterilized  
bottles.



We Make Fruit Punch for  
Parties

Phone 3352

We Deliver

Missoula

# Laundry Co.

111-121 E. Spruce St.

Dry Cleaners

Hat Blocking

Rug Cleaning



PHONE 3118

## SMITH'S DRUG STORE

—and—

## SOUTH SIDE PHARMACY

PRESCRIPTIONS

Columbia Portable and Latest  
Records

DEVELOPING FREE WITH  
PRINTING

Eastman Kodaks and Kodak Supplies

Stationery and School Supplies

more mixtures than a chemist; more  
about a dark room than a photogra-  
pher; more about souls than a shoe-  
maker; more about holds than a wrest-  
ler and more about the proper time  
than a watchmaker.

Although Peter was master of many  
arts, he was granted only the bachelor's  
degree, which he still holds. His last  
words were: "Education is truly a  
wonderful thing. I wish I had more  
of it." (Author's Collection).



Electric Service

*We Aim to Serve  
the Public*

EFFICIENTLY  
ECONOMICALLY  
COURTEOUSLY



Steam Heat

Water

*The Montana Power  
Company*



# Associated Students' Store

*Students' Headquarters*

for their

Fun - Rest - Gossip - Eats

and

School Supplies

THE CO-OP

ON THE CAMPUS

The Place of Good Fellowship

## "CLOROX"

GENERAL DISINFECTANT  
AND DEODORANT

Keeps Lockers Fresh



May be had at

Any Grocery or Drug Store

A help in washing, easy on the hands  
and removes nicotine stains.

## Schramm-Hebard Meat Co.

Choice Meats

Poultry, Fish and Oysters

Our Special Pure Pork Sausage  
is Delicious



PHONE 3191

417 North Higgins Avenue

MISSOULA

MONTANA

### ODE TO CANOPENER

Blessings on thee, hunk of steel,  
Essential part of every meal,  
With thy gadgets nicely placed  
To slaughter fingers moved in haste;  
Bride's first meals would all be flops  
Without your help removing tops;  
To marriage, you're the one solution,  
Keeping it an institution.

Even in a bachelor's place  
It's nice to see your crooked face  
And know you'll be quite handy here  
In case we get a case of beer.  
Your corkscrew, too, is mighty nice,  
Uncorking gin or chipping ice.  
Your work is piled for you in stacks  
From splitting wood to driving tacks

You open up the morning milk  
And do the job as fine as silk,  
You keep the cream from flying high,  
You keep the walls and ceiling dry;  
You stir the soup, amuse the kids,  
Remove the most reluctant lids;  
In fact, it isn't home at all  
Without you hanging on the wall.

ASK FOR

## Golden Glo Dairy Products



BUTTER                      ICE CREAM  
COTTAGE CHEESE  
BUTTERMILK  
MILK and CREAM

When giving a party serve

### Golden Glo Ice Cream

We make special orders and designs



## Golden Glo Creamery

## CONSOLIDATED DAIRIES



Pure Pasteurized Milk  
and Cream

Early Deliveries



PHONE 2977

# The First National Bank of Missoula

Established 1873



## OFFICERS AND DIRECTORS

A. R. JACOBS, President

D. C. SMITH, Vice President

H. R. GREENE, Vice President

THEODORE JACOBS, Cashier

E. R. ANDERSON, Assistant Cashier

S. J. COFFEE

HOWARD TOOLE

WALTER L. POPE



(Montana's Oldest National Bank)

## Safeway Stores, Inc.

Distribution Without Waste



Quality Merchandise

at

Saving Prices

with

an extra measure of cheerful happy  
service

## Missoula Coal and Transfer Co., Inc.

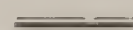
LOU ELLINGHOUSE, Pres.

R. G. LAING, Secy.-Treas.

HOW IS YOUR COAL PILE?



**COAL and WOOD**



110 East Broadway

PHONES 3662 and 3630



## FOR THOSE YET TO COME

Pioneers fought in heat and cold  
And drought and mud and wet;  
They worked like snails to blaze their  
trails,

Then packed them down with sweat,  
They bled and died, but still fought on  
So you and I, now they have gone,  
May ride in cars and gaze upon

Wayside filling stations, refuse of Sun-  
day picnics and mountain scen-  
ery dotted with cigarette adver-  
tisements.

Thoughtful men and women planted  
And worked with goal in view;  
With mental toil and midnight oil  
They built Montana's U.  
Beneath a smoky kerosene light  
They thought and labored through the  
night

So children of their children might  
Sleep through classes, carve initials on  
desks, eat fraternity and dormi-  
tory grub and let traditions die  
unmourned.

Grizzly teams ploughed mud and snow  
In gridiron fights of old;  
They'd bleed and die to hold on high  
The Copper, Silver, Gold.  
With grit and sweat they paved the way  
For Grizzly football squads today  
So you and I, their children, may  
Sit in the bleachers and razz our play-  
ers, organize discussion groups  
where flat-chested individuals  
moan that football undermines  
our educational system and go  
to the Bobcat game just to put  
on a party.

# Youngren Shoe Shop

The College Shoe Re-builder

RAY P. WOODS



DYEING

HEEL PLATES

General Shoe Re-building

NEW HEELS

DANCE TAPS

"Thin Soles that wear a long time"

Basement of Higgins Bldg.

We Deliver

## Food Which Pleases

the most epicurian taste,  
with a wide range of choice  
from rich, creamy malts,  
all-juice process hamburg-  
ers, tasty toasted sand-  
wiches to delicious home-  
made pies and cup cakes.  
We invite your patronage  
and your friendship.

To the Taste  
That Tells

THE  
**Sandwich Shop**

--ramey's

## *Tomorrow's Memories*

All of us are more or less inclined to "try anything once" but we have long memories for unpleasant after-effects.

Our organization knows that, so we try earnestly to leave you a pleasant recollection of our work, prices and service.

---

## The Missoulian Publishing Co.

PHONE 2162

MISSOULA

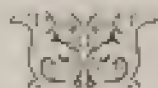
MONTANA

## QUINN'S BAKERY

Wholesale and Retail

ROYAL CREME BREAD

Special orders receive prompt and  
careful attention



PATRICK QUINN, Prop.

531 South Higgins

Phone 3722

## *Our Three Prides*



Sanitation

Courtesy

Service



## TAYLOR & HILL BAKERY

131 E. Broadway

Phone 3388

## ENNUI

If you don't mind my confession,  
I'm tired of this depression,  
    And I wonder how we ever did en-  
    dure it.

But the things that really tire me  
Are the talks that should inspire me  
    To a spending orgy guaranteed to  
    cure it.

There's a Communistic stir-up  
Every day or so in Europe,  
    But my temperature remains about  
    the same.

I can't seem to get excited  
If our foreign consul's slighted  
    By the soldiers of old General  
    What's-His-Name.

Not a one of Herbie Hoover's  
Dire political maneuvers  
    Can arouse a bit of Bourbon wrath  
    in me.

Though Chicago crime's uncurbed,  
I can sleep on undisturbed;  
    I stay just as calm as anyone can be.

But show me some blonde baby  
With a look that says: "Well, maybe."  
    And the damage to my peace of mind  
    is done.

She may be minus brains,  
But her type entertains;  
    I may be queer, but still I think it's  
    fun.

Delicious Wholesome Foods for all  
Occasions

## DANCE AND DINE AT

# The Chimney Corner

540 Daly Avenue

Across from Corbin Hall

PHONE 6001

Afternoon Parties                      Banquets  
After-Theatre Refreshments

# Fashion Club Cleaners

The best of Service. You  
will always find our serv-  
ice modern and up-to-date.  
You deserve the best.



PHONE 2661

J. R. Nagues, Prop.

525 South Higgins Ave.



# Anaconda Copper Mining Company

LUMBER DEPARTMENT

Mills at Bonner and Milltown, Montana

---

Manufacturers and Wholesale Distributors

of

**PONDEROSA PINE AND MONTANA FIR  
AND LARCH LUMBER**

---

We make a specialty of sixteen-inch mill wood that can be favorably distributed in a radius of about one hundred miles from our mills.

SHOP AT

**McCracken**  
—Stores—

Every Day is a Sale Day

ALWAYS!

A Good Show at  
the  
**FOX - WILMA  
FOX-RIALTO  
THEATRES**

E. K. TAYLOR, Manager

COMPLETE LINES

of  
**Whitman's Candy**  
and  
**Eaton Crane & Pike  
Stationery**

**HARKNESS DRUG  
STORE**

Cor. Pine & Higgins

Missoula

## PIPES O' PAN

When I was but a little boy,  
Father's pride and Mother's joy,  
I decided I was made  
To follow up the plumbing trade;  
And though I've wandered far away  
From youth's first love, I find today,  
That back those old ambitions come  
Whenever I see a plumber plumb.

Every other walk in life  
Is full of trouble, strain and strife;  
Every one of us must use  
Care in minding P's and Q's;  
While one who plumbs is free from  
care,

Simply piping here and there,  
And unlike ours, his conscience tells  
Him merely mind his toes and ells.

I think I'm probably a fool  
For not attending plumber's school.  
A college class so often gripes,  
While plumbers' courses all are pipes.  
Instead of learning psych and lit,  
I'd now be making fittings fit  
And starring in those bathroom scenes  
They show in humor magazines.

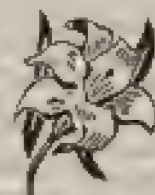
Though now I tread a different path,  
I hear the siren call of bath  
That bids me grab a wrench and go  
Leading water to and fro;  
But since I've made my final choice  
I must ignore that piping voice,  
And hope that in the world to come  
I'll finally get my chance to plumb.

*Say it with Flowers*

for

ALL OCCASIONS

Home-Grown Flowers



**Garden City Floral Co.** INC.  
BROWNS OF  
PLANTS -- FLOWERS  
MISSOULA  
MONTANA



Borg Jewelry

and

Optical Co.

Watches

Jewelry

Diamonds

EYES EXAMINED  
GLASSES FITTED

# OVERWORKED—

That little word "Service" so frequently used and so often abused by modern business, most assuredly labors under a peak load. Despite the admitted truth of this statement, the

## CENTRAL FUEL and BUILDING SUPPLY CO.

still contends that "Service linked with Quality Merchandise" remains the only guarantee of assured satisfaction.

Best Brands of Montana,  
Wyoming and Utah Coals.

Builders' Specialties for  
the Ultra-Modern Home.

136 East Broadway

MISSOULA

PHONE 5258

MILLINERY

HOSE

*Mary Moore*  
SHOP

Garments of Refinement

Hotel Florence

PAJAMAS

LINGERIE

Are You Broke

or is it

YOUR WATCH

C. L. WORKING

"Always Working"

### THE INTERLOCKING GRIP

Love, it seems, on close inspection,  
Is lots like golf—a spring infection;  
A crowded course each afternoon,  
A crowded car beneath the moon.  
We drive and dub at golf each day  
Then lie and love our nights away,  
Practice each sport more and more  
In hopes we may improve our score.

It makes no difference where you are,  
What kind of course, what make of  
car;

In fairway, rough, sedan or coach,  
A heap depends upon approach,  
Success will come your way if you  
Will only learn to follow through,  
You never need to fear the rough  
If all your ties are good enough.



**FIRST**—WITH SMARTEST STYLES

We Invite  
Your Charge  
Account

**DONOHUE'S**

**REMOTE CONTROL**

Winter's gone and poets sing  
Blissfully concerning spring;  
They hymn of birds and flowers and  
trees,

Forgetting irate bumblebees,  
Blistered backs and sunburned faces,  
Refuse-dotted picnic places,  
Big black bugs and busy ants,  
Slimy mud and grass-stained pants.

Poets never seem dismayed  
At goats that drown in lemonade,  
Or flies who die within the jar  
Where all the luncheon pickles are.  
In fact, I don't think poets fall  
For Sunday picnic jaunts at all;  
They stay close by the frigidaire  
And do their rhapsodizing there.


**HEADQUARTERS**

For

**FLOWERS**

For

Receptions, Teas, Corsages

  
**HEINRICH'S FLOWERS**  
100 EAST WASHINGTON      715 WEST 10TH      1000 WEST 10TH  
ASTORIA      ASTORIA      ASTORIA

**DEPENDABLE**

**Laundry Service**

**FLORENCE LAUNDRY  
CO.**

Dial 2302

**MY BEST WISHES ALWAYS**

To the Faculty and Students of, and Every One Connected with

**OUR UNIVERSITY**

FRANK POOLE, Proprietor of

**THE MISSOULA CLUB**

139 West Meighn Street

Phone 4205

BEVERAGES    CANDIES    CIGARS    CIGARETTES    TOBACCOS  
DE LUXE HAMBURGER SANDWICHES

Your patronage is solicited and will be appreciated

HI-POWER GASOLINE

Means

GREATER SPEED AND POWER  
TO YOU

So

"Fill 'er up"

At

Clack's Service  
Station

2nd Ave. North 9th St.

Great Falls, Mont.

JOE FREY, Manager



COMPLIMENTS OF

Arizona Cafe

BUTTE

MONTANA



McKAY ART CO.



KODAKS                      FILMS

MOVIE CAMERAS

Developing and Printing

BOURDEAU  
MERCANTILE CO.

Incorporated

Fair and Courteous Treatment to All

833-839 Higgins Ave.

PHONE 3194

MALLORY  
HATS

FLORSHEIM  
SHOES

*Yandt's*  
**MEN'S WEAR**

Next to Shapard Hotel

BOURDEAU  
MEAT MARKET

W. WERNER, Prop.

Where Quality and Service is the  
Keynote.

835 So. Higgins Ave.

PHONE 3766

"Our Fish Are Always Fresh"

### THE NOBLE RED MEN

We dedicate this verse  
To the men who've known the curse  
Of having facial blood become con-  
gealed;  
For nothing quite so crushing  
As a tendency toward blushing  
Has ever yet to menfolks been revealed.

This sudden vasomotion  
Is caused by some queer notion  
That perhaps you look as silly as you  
feel,  
And when you start to thinking,  
You mechanically start pinking;  
Your supposition then is true and real.

The simple blushing brides  
Disappeared with buggy rides  
And tandem bikes and braids some  
years ago.  
Maybe, some way, we could rake up  
One who'd blush behind her makeup,  
But even then, we doubt if it would  
show.

On a girl, a blush is sweet,  
But it's somewhat obsolete  
And fills its place in memory's hall of  
fame;  
But the men will carry on  
Until the race is gone;  
Male ears will flaunt the crimson just  
the same.

### DINE AND DANCE

— at —

## The Corner Cafe

MEADERVILLE



Italian Dinners

Phone 2-4019 for Reservations

Compliments of

F. & W. GRAND SILVER  
STORES

BUTTE, MONTANA

Compliments of

FRANK WARD

Printing

Binding

BUTTE

MONTANA



# *Metals Bank & Trust Company*

BUTTE, MONTANA

Identified with Montana's Progress since 1882

INTEREST ON SAVINGS ACCOUNTS

Member Federal Reserve System

## OFFICERS

JAMES E. WOODARD, President

JAMES T. FINLEN, Vice President

JOHN L. TEAL, Assistant Cashier

RALPH W. PLACE, Cashier

JOHN J. BURKE, Assistant Cashier

B. F. STRANAHAN, Assistant Cashier

## DIRECTORS

CHARLES J. KELLY, Chairman of the Board

JOHN D. RYAN

J. BRUCE KREMER

JOHN E. CORETTE

CORNELIUS F. KELLEY

FRANK M. KERR

HARRY A. GALLWEY

THOMAS A. MARLOW

J. R. HOBBS

JAMES T. FINLEN

JAMES E. WOODARD

Affiliated with

FIRST BANK STOCK CORPORATION

Any time you  
wish to get  
into a

Good Eating Place

if you have the  
opportunity  
call at

*Truzzolino's*  
— CAFE —

120 W. Park

BUTTE, MONT.

# WEIN'S

MONTANA'S LARGEST MEN'S  
STORE

33, 35, 37 EAST PARK ST.

BUTTE

## MOTHER'S WORK

Our Mother would, when we were small,  
Take her sewing out to call;  
She and Mrs. Smith would sit  
And each get out her sewing kit,  
Then they'd talk and patch of tears,  
Sew on buttons, make repairs,  
Pay their social debts and do  
A lot of useful labor, too.

No matter to which house she went,  
Mother's afternoons were spent  
Doing work that should be done,  
But seemingly, a lot of fun;  
She'd come home with bits of news,  
Lots of gossip, neighbors' views;  
Such days furnished her a mint  
Of news that never got in print.

But now when Mother goes to call  
She doesn't take our clothes at all;  
It isn't that she's prone to shirk,  
But takes a different kind of Work,  
Instead of shirts and buttons, she  
Nowadays takes Milton C.,  
And where she used to carry thread,  
She packs a checkbook now, instead.

She brings home news and views no  
more,

But memorizes every score  
And talks of bids and tricks and slams,  
Instead of waddings, clothes and hams;  
Johnny Jones may have the group,  
But Mother doesn't give a whoop  
Unless his mother couldn't come  
And substituted someone dumb.

## OUR SPECIALTY

### Beautiful Sets of Teeth

Prices as low as First Class  
Work Permits.

All Work Receives Personal  
Attention.

## Dr. F. A. Ironside

16 North Main St.  
BUTTE

Largest Dental Office in  
Montana

## The Lockwood Dinners

Lunches      Candies  
Ice Cream

---

PRIVATE ROOM FOR PARTIES

---

Next to Leggat Hotel  
BUTTE, MONTANA

Students Welcome

Established 1877

# First National Bank

BUTTE, MONTANA

ANDREW J. DAVIS, President  
A. J. DAVIS, JR., Vice President  
GEORGE U. HILL, Vice Pres. and Cashier  
J. F. LOWNEY, Assistant Cashier  
GEO. F. CASSIDY, Assistant Cashier

Accounts of Banks, Merchants and  
Individuals Solicited

## LAGUE TAILORING CO.

First Nat. Bank Bldg.

BUTTE

Nash Clothes

SUITS AND TOP COATS

\$19.50

\$23.50

\$29.50

\$35.00

Your Way Is the Right Way

at

## THE METROPOLITAN CAFE

BUTTE, MONTANA

"Where Meals Are Relished"

While in Butte Make

# GAMER'S

Your Headquarters

Dainty Lunches

Dinners

Candies

Ice Creams



Service Until Midnight

## JUST A LITTLE SLIP

Since fashion has decreed

That skirts shall cover knees,

Man's viewpoint now depends

Upon sun instead of breeze,

With the light behind a subject

Who's assumed the proper stance,

The plumb of underpinning

May be measured

At a glance.

From having female profiles

So plainly placed in view,

The modern man is learning

More than Adam knew.

He has, at least, decided,

That for the ladies fair,

A slip's a tragic thing to make,

But a darn good thing

To wear.





KEEP YOUR CROWD TOGETHER AND TRAVEL  
BY MOTOR COACH

on your

Picnics and Other Outings  
PULLMAN CAR EQUIPMENT

For Terms on Chartered Coaches Apply to

## Intermountain Transportation Company

129 W. Front St.

MISSOULA

Phone 3484

### THE CURSE OF VERSE

Consider, please, the column bard,  
Who works so terribly, terribly hard  
To make his rhymes and meters fit  
And be the very soul of wit;  
He sits up, cursing, through the night  
And does his level best to write,  
To please his readers every day  
By saying things a different way.

The column poet must abjure  
The cause of better literature,  
Rhyme a host of clever jokes  
About a lot of other folks  
And spend his life just cracking wise  
So we may laugh at other guys,  
Knowing well that only we  
Are just as all mankind should be.

### When in Butte

Stop at the  
**ARIZONA HOTEL**

Park at Arizona

PHONE 6509

R. H. VEITCH, Mgr.

Repeatedly Chiropractors have demonstrated that patients who thought they would have to be operated upon have been saved through Chiropractic. For particulars see

**DR. PETER O. HOLM**  
CHIROPRACTOR

106-7 Pennsylvania Bldg., Butte  
PHONE 3069

# STUDENTS' INDEX

For

STYLES AND VALUES

at the

## J. C. PENNEY CO.

The Gentry label on our men's clothing means  
Snappy Styles that Fit.

"CO-EDS" and "EDS" AGREE

IT'S EASY TO BE FASHIONABLE IF YOU SHOP AT PENNEY'S

"Student Employees Will Serve You"

*Nil Nite*

### THE GREATEST NAME IN AWARD SWEATERS

**O**N this name rests not only the responsibilities incident to leadership, but also a trust, if you please . . . for is not the son entitled to as near perfection in his Award Sweater as the father?

Product of

OLYMPIA KNITTING MILLS, Inc.

OLYMPIA · WASHINGTON

# Index to Advertisers



## A

Anacostia Copper Mining Co.	216
Arizona Cafe (Butte)	226
Arizona Hotel (Butte)	225
Associated Students' Store	210

## B

Barbara's Vanity Shop	198
B & H Jewelry Co.	207
Berg Jewelry & Optical Co.	217
Boardman Meat Market	220
Boardman Mercantile Co.	220
Brownbilt Shoe Store	203
Butte Cleaners	205

## C

Central Trust Co., Inc.	218
Chimney Corner	215
Clark's Sewing Station (Great Falls)	220
"Clonox"	210
Consolidated Dairies	211
Corner Cafe (Butte)	221

## D

Dally, Inc., John R.	206
Dickinson Piano Co.	202
Dixon & Horn	200
Donohue's	219

## E

Eddy's Bakeries	204
Edgeworth	201

## F

F. & W. Grand Silver Stores (Butte)	224
Fashion Club Cleaners	215
First National Bank (Butte)	224
First National Bank (Missoula)	212
Florence Hotel	199
Florence Hotel Barber Shop	206
Florence Laundry Co.	219
Fox-Kiatts, Fox-Wilma	216

## G

Gamot's (Butte)	224
Garden City Floral Co., Inc.	217
Golden Gile Creamery	211

## H

Harkness Drug Store	216
Hart Refineries	202
Heberich's Floral	219
Herrick's	199
Hi-School Candy and Cafe	206
Holna, Dr. Peter G. (Butte)	225

## I

Intermountain Transportation Co.	225
Ironsides, Dr. F. A. (Butte)	223

## L

Lagae Tailoring Co. (Butte)	224
Lackwood Cafe (Butte)	223

## M

MacMarr Stores	212
McCracken Stores	216
McKay Art Co.	220
Majestic Candy & Beverage Co.	208
Master Cleaner and Dyer	201
Melander Studio	200
Metals Bank & Trust Co. (Butte)	222
Metropolitan Cafe (Butte)	224
Missoula Coal & Transfer Co., Inc.	212
Missoula Club	219
Missoula Drug Co.	201
Missoula Laundry Co.	208
Missoula Mercantile Co.	197
Missoulian Publishing Co.	214
Montana Power Co.	209
Moore Shop, Mary	218

## O

Office Supply Co.	202
Olympia Knitting Mills, Inc.	226

## P

Penney Co., J. C.	226
Peterson Drug Co.	198
Public Drug Store	200

## Q

Quinn's Bakery	214
----------------	-----

## S

Sandwich Shop, Penney's	213
Schramm-Hebard Meat Co.	210
Sentinel-Missoula Creamery, Inc.	205
Smith's Drug Stores	208
Sport Shop	198
Star Garage	204
Steln & Son	205

## T

Taylor & Hill Bakery	214
Toggerly	206
Trenzolini's Cafe (Butte)	222

## W

Ward, Frank (Butte)	221
Wein's (Butte)	222
Western Montana National Bank	207
Woods Studio, Art	203
Working, C. L.	218

## Y

Yault's	220
Youngren's Shoe Shop	213



# 1932 Sentinel Index



<b>A</b>		<b>H</b>	
Activities	103-114	Helen	19
Administration	42	Hi Jinx	183
Advertising	105-226	Home Economics Club	122
Alpha Chi Omega	141	Honorarys	103-114
Alpha Kappa Psi	113	<b>I</b>	
Alpha Phi	112	Independents	192
Alpha Tau Omega	129	Interchurch	192
Alpha Xi Delta	113	Interfraternity	128
Announcements	178	Interscholastic	187-394
Athletic Board	57	Intramural	87-92
Athletics	55-99	Troy Co. Basketball	91
A. W. S.	100	Interscholastic Basketball	91
<b>B</b>		M Club Winners	91
Batal	186	Minor Sports Team	88
Basketball	23-78	South Hall Basketball	92
Best Day	106	<b>J</b>	
Bramos	43	Jesse	17
<b>C</b>		Junior Officers	49
Central Board	101	Junior Roll	50
Clapp	45	<b>K</b>	
Classes	27-34	Katula	175-176
Clubs	115-126	Kappa Alpha Theta	146
Councils	56	Kappa Delta	147
Copyright and Contents	5	Kappa Kappa Gamma	148
<b>D</b>		Kappa Psi	113
Debate	182	Kappa Sigma	131
Dedication	7	<b>L</b>	
Delta Delta Delta	144	Little Theatre	180-181
Delta Gamma	145	<b>M</b>	
Delta Sigma Lambda	130	M Club	123
Departments	14	Masquers	100
Druids	108	Miller	18
<b>E</b>		Minor Sports Board	58
Entrance to Main Hall	11	Mortar Board	104
<b>F</b>		<b>N</b>	
Fitzgerald	48	Newman Club	121
Football	59-72	North Hall	117
Forestry Club	120	<b>P</b>	
Forestry Kaimia	177	Pan-Hellenic	119
Forestry Rifle Club	149	Pharmacy Club	125
Fraternities	127-137	Phi Delta Theta	132
Freshmen Officers	53	Phi Lambda	114
Freshmen Hall	51	Phi Sigma	119
Frontier	178	Phi Sigma Kappa	133
<b>G</b>		Pollinger	49
Glee Club (Men's)	184	Press Club	121
Glee Club (Women's)	185	Publications	171-178

**S**

Scenic .....	151-168
Scheuch .....	16
Schools .....	20-26
Business Administration .....	20
Education .....	21
Forestry .....	22
Journalism .....	23
Law .....	24
Music .....	25
Pharmacy .....	26
Sedman .....	18
Senior Officers .....	28
Senior Section .....	29-47
Sentinel .....	172-174
Sigma Alpha Epsilon .....	134
Sigma Chi .....	135
Sigma Delta Chi .....	111
Sigma Kappa .....	149
Sigma Nu .....	136
Sigma Phi Epsilon .....	137
Silent Sentinel .....	105
Sophomore Officers .....	51
Sophomore Roll .....	52
Sororities .....	139-150
South Hall .....	118
Spanish Club .....	126
Speer .....	17
Stage .....	179-186

**T**

Tanan-of-Spur .....	107
Theta Sigma Phi .....	112
Title Page .....	3
Track .....	79-86

**U**

University .....	9-26
------------------	------

**W**

W. A. A. .....	94
Women's Athletics .....	93-98
Baseball .....	95
Basketball .....	95
Hockey .....	96
Swimming .....	97
Track .....	98
Volleyball .....	98

**Y**

Yell Kings .....	114
------------------	-----

**Z**

Zeta Chi .....	150
----------------	-----

## Appreciation



We, the members of the 1932 Sentinel staff, wish to take this opportunity of expressing our appreciation to the many firms and individuals whose efforts have helped us to make the publication of this book successful.

We are especially indebted to Mr. Charles W. Hardy, Mr. Clyde Jones, Mr. Fred Miller, Mr. Fred Lawry, Mr. Norman Tufty and Mr. and Mrs. Ace Woods.



